

SAINT MARY'S

CATHOLIC CHURCH • PARK CITY

1505 White Pine Canyon Rd. • Park City, UT 84060 • StMarysParkCity.com • (435) 649-9676



JUNE 7, 2026

SOLEMNITY OF THE MOST HOLY BODY & BLOOD OF CHRIST

SACRED HEART RETREAT NEXT WEEKEND
CONSECRATION TO THE SACRED HEART
SUMMERTIME LUNCH BUNCH



ST. LAWRENCE

CATHOLIC MISSION • HEBER CITY

5 South 100 West • Heber City, UT 84032 • StMarysParkCity.com • (435) 654-4035

WELCOME TO ST. MARY'S PARISH

In 1881, God gave a small group of miners a mission to bring to these mountains the world's greatest treasure: the Body and Blood of Jesus Christ, the Eucharist, and the Faith and Charity that flow from Him.

Today, that mission has spread from the streets of Old Town Park City, to the meadows of White Pine Canyon, to the Heber Valley and beyond. St. Mary's Parish and St. Lawrence Mission seeks to evangelize, catechize, give back in Charity,

and enrich the community through the Catholic Faith and its intellectual, artistic, and cultural traditions. To bring all the treasure of Jesus Christ, for the salvation of souls, and the Greater Glory of God!

Newcomers and Visitors: Thank you for joining us. We invite you to learn more about St. Mary's Church at our website: StMarysParkCity.com.

BRINGING THE WORLD'S GREATEST TREASURE TO THE WASATCH BACK + SINCE 1881 +

MASS TIMES, CONFESSION, ADORATION, & VISITING HOURS



ST. MARY OF THE ASSUMPTION

1505 White Pine Canyon Rd, Park City 84060
(435) 649-9676 - StMarysParkCity.com

Office Hours (Mon-Thur) 8:30 AM - 5:00 PM

Saturday English Mass: 8 AM (1st Saturdays), 5:30 PM

Sunday English Mass: 8:00 AM, 10:30 AM

Domingo Misa en Español: 1:00 PM

Confession: Mon, Thurs, Sat 4:30 - 5:30 PM

Adoration Holy Hour: Mon 4:30 PM

For Sunday Latin Mass and Vespers info, visit the website at StMarysParkCity.com/Latin.

Visiting Hours: Mon - Fri 7 AM - 8 PM

ST. MARY'S OLD TOWN CHAPEL

121 Park Ave, Park City 84060

Daily Mass: Mon - Fri 8:00 AM

Adoration Holy Hour: Mon 4:30 PM | Thu 8:30 AM

Visiting Hours: Daily during daylight hours.



ST. LAWRENCE MISSION

5 South 100 West, Heber City 84032

(435) 654-4035 - StLawrenceMission.org

Office Hours (M/W) 9 AM - 5 PM, (Th) 9AM - 1 PM

Saturday English Mass: 5:00 PM

Sunday English Mass: 8:00 AM, 10:00 AM

Domingo Misa en Español: 12:00 PM

Daily Mass: Mondays and Thursdays 9:30 AM

Misa en Español: Miércoles 6:00 PM

Confession: Mondays and Thursdays 10:00 AM

Adoration + Confession: Wed. 5:00 PM - 6:00 PM

Visiting Hours: Mon - Fri 6 AM - 8 PM

ST. LAWRENCE THRIFT STORE

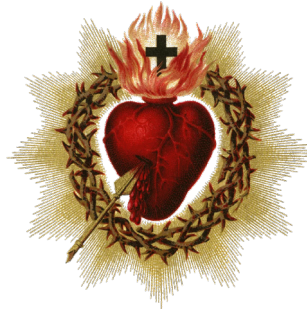
84 S 100 W, Heber City, UT 84032

(435) 657-0209 - StLawrenceThriftStore.com

Wed - Fri 10:00 AM - 6:00 PM, Sat 10:00 AM - 5:00 PM

FOR UPCOMING LITURGIES, VISIT STMARYSPARKCITY.COM/LITURGY

CONSECRATION TO THE SACRED HEART OF JESUS



HOLY HOUR & CONSECRATION MASS

ST. MARY'S
THURSDAY, JUNE 11 | 5-7 PM

All are welcome to this immersive Holy Hour and Mass for the Consecration of the United States to the Sacred Heart of Jesus. 5pm Holy Hour with sacred music and prayer before the Blessed Sacrament, followed by Holy Mass at 6pm.



— RETREAT —
Inviting the
SACRED HEART
of **JESUS**
Into Our Lives and Community

 **SATURDAY**
JUNE 13, 2026
9:00 AM – 12:30 PM

 **ST. MARY OF THE ASSUMPTION**
PARISH CENTER
Park City, Utah

REGISTER HERE 

 SACRED MUSIC

 GUIDED MEDITATION

 STORYTELLING

 PRAYER & REFLECTION

 COMMUNITY

A DAY OF FAITH, INSPIRATION, AND RENEWAL FOR OUR HEARTS, FAMILIES, AND COMMUNITIES.

SUMMERTIME LUNCH BUNCH

FOR CHILDREN ENTERING GRADES K-4

AT ST. MARY'S
WEDNESDAYS 11AM - 3PM
JUNE 17-AUGUST 5

Each week we will explore a new theme through bible lessons, games & crafts. We will unwind with a child-friendly movie and a lunch of pizza and dessert will be served. A simple and fun way to stay connected with our St. Mary's community.

No cost and no ongoing commitment.

RSVP each week no later than Tuesday on the weeks you want to attend, either by email or text lhawkins@stmarysparkcity.com or 619-548-1746.

*Older students and parents are welcome to volunteer to help and join the fun.



WILL YOU ANSWER THE CALL TO SERVE

USHERS

Ushers play an important role in the life of St. Mary's. Their ministry is more than a task - it is a profound act of hospitality. They are often the first to greet parishioners and guests and assists.

If you would be willing to commit to serving as an usher at Mass once per month, please contact, Joe Cronley, at joeinpc@gmail.com. Training will be provided.

Thank you for considering serving in this important ministry."

ALTAR SERVER/ACOLYTE TRAINING TUESDAY, JUNE 9 | 6 - 7:30 PM AT ST. MARY'S

Altar servers and Acolytes don't just assist the priest in the Mass, they bring beauty and reverence to the Mass.

If you are interested in altar serving or being an acolyte (head server), please join us for this training event.

ABOUT THE COVER:

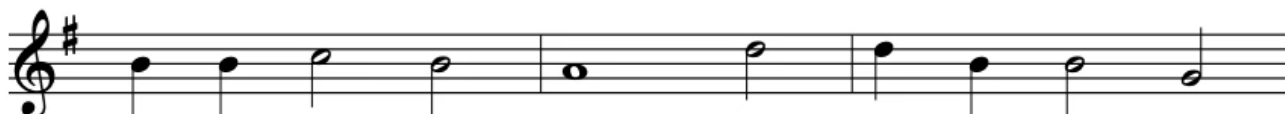
Title: Allegory of the Eucharist | Artist: Unknown 1676-1725
Type: Oil on Canvas | Location: Ceralbo Museum

ENTRANCE HYMN

CIBAVIT EROS



Ant. The Lord pro - vid - ed Is - ra - el With
 1. A loud shout raise to Ja - cob's God, Re -
 2. Blow on the ram's horn on our feast, The
 3. When Jo - seph came from E - gypt, he Re -
 4. "I am the Lord who brought you out Of
Dox. Give glo - ry to the Fa - ther, Son, And



Ant. gifts of fin - est wheat Gave flow - ing hon - ey
 1. joyce in God our King; Sound tim - brels, pluck the
 2. full moon and the new; This is a law of
 3. ceived the sol - emn charge. A great voice said, "I
 4. E - gypt and I said, If now you o - pen
Dox. Spir - it e - qual - ly; As from the first it



Ant. from the rock To sat - is - fy their need.
 1. mer - ry harp, And play the lyre and sing.
 2. Ja - cob's God And Is - rael's stat - ute, too.
 3. eased your load, And set your feet at large."
 4. wide your mouth, You will be tru - ly fed."
Dox. was, is now, And ev - er - more shall be. *Ant.*

GLORIA

Introduction ♩ = 100

Glory to God

MASS FOR A SERVANT CHURCH
 MICHEL GUIMONT



f All Glo - ry to God in the high - est, and on earth peace to peo - ple of good will. *mf* We

praise you, we bless you, we a - dore — you, we glo - ri - fy —

you, we give you thanks for your great glo - ry,
 Lord God, heav - en - ly King, O God, al - might - y Fa - ther.
 Lord Je - sus Christ, On - ly Be - got - ten Son,
 Lord God, Lamb of God, Son of the Fa - ther, you take a - way the
 sins of the world, have mer - cy on us; *f* you take a - way the
 sins of the world, re - ceive our prayer; you are seat - ed at the
 right hand of the Fa - ther, have mer - cy on us. *PIANO*
mf For you a - lone are the Ho - ly One, you a - lone are the Lord,
 you a - lone are the Most High, Je - sus Christ,
 with the Ho - ly Spir - it, in the glo - ry of God the Fa - ther.
 A - men, a - men, a - men. *rit.*

All rights Reserved. Reprinted under One License A-607411

RESPONSORIAL PSALM

MOST HOLY BODY & BLOOD OF CHRIST

RESPONSORIAL PSALM

Psalm 147:12-13, 14-15, 19-20

O praise the Lord, Je - ru - sa - lem.

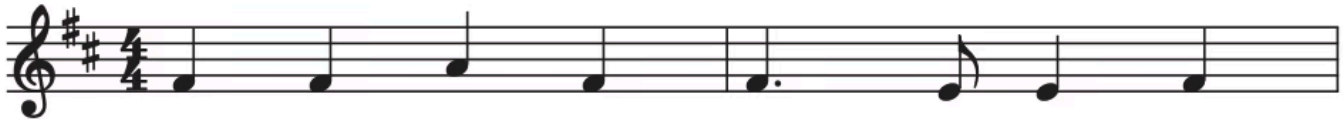
All rights Reserved. Reprinted under One License A-607411

No collection is taken during Mass. You may give by using the envelopes in the pew in front of you.
Thank you for your generosity.

PREPARATION OF GIFTS

SEE US LORD, ABOUT YOUR ALTAR

DRAKES BROUGHTON



1. See us, Lord, a - bout your al - tar,
2. Hear our prayers, O lov - ing Fa - ther,
3. Once were seen the blood and wa - ter:
4. Wheat and grape con - tain the mean - ing:
5. Hear us yet: so much is need - ful
6. Mem - bers of his Mys - tic Bod - y,



1. Tho' so man - y we are one; Man - y souls by
2. Hear in them your Son, our Lord; Hear him speak our
3. Now are seen but bread and wine; Once in hu - man
4. Food and drink he is to all; One in him we
5. In our frail, dis - or - dered life; Stay with us and
6. Now we know our prayer is heard, Heard by you be -



1. love u - ni - ted In the heart of Christ, your Son.
2. love and wor - ship As we sing with one ac - cord.
3. form he suf - fered, Now these gifts him - self en - shrine.
4. kneel a - dor - ing, Gath - ered by his lov - ing call.
5. tend our weak - ness Till that day of no more strife.
6. cause your chil - dren Have re - ceived th'e - ter - nal Word.

Text: 87 87; John Greally, alt., © John Greally. Published by OCP. All rights reserved.
Music: Edward Elgar, 1857–1934.

All rights Reserved. Reprinted under One License A-607411

SANCTUS

Holy, Holy, Holy

MASS FOR A SERVANT CHURCH
MICHEL GUIMONT

♩ = 100

PIANO
INTRO

mf Ho - ly, Ho - ly, Ho - ly Lord — God of Hosts. —
cresc. Heav'n and earth are full — of your glo - ry. — *f* Ho -
san - na in — the high - est. *mf* Bless - ed is he who
comes in the name of the Lord. — *f* Ho - san - na in — the high - est. *rit.*

All rights Reserved. Reprinted under One License A-607411

AGNUS DEI

LAMB OF GOD

mp Lamb of — God, you take a - way the sins of the world, have
mer - cy on us. Lamb of — God, you take a - way the
sins of the world, have mer - cy on us. Lamb of —
God, you take a - way the sins of the world, *rit.* grant — us peace.

All rights Reserved. Reprinted under One License A-607411

COMMUNION HYMN

BREAD OF ANGELS

Curtis Stephan



1. Bread of an - gels, we re - ceive you; with us
2. Cup of Mer - cy o - ver - flow - ing, fill us
3. Word in - car - nate, dwell with - in us; pierce our
4. Though un - wor - thy, we re - ceive you, sac - ra -



1. now a - bide. Pre - cious Je - sus, man - na of
2. with your grace; wine of pas - sion, O Son be -
3. hard - ened hearts. Ten - der Je - sus, Love so
4. ment di - vine. Bread of an - gels, ac - cept our



1. a - ges, with us now re - side.
2. got - ten, we flee to your em - brace.
3. gen - tle, nev - er let us part.
4. prais - es, let your glo - ry shine!



1. *Pa - nis an - gé - li-cus fit pa - nis hó - mi - num,*
2. *O res mi - rá - bi-lis man - dú - cat Dó - mi - num,*
3. *Te, tri - na Dé - i-tas ú - na-que, pó - sci - mus,*
4. *Per tu - as sé - mi-tas duc nos quo tén - di - mus,*



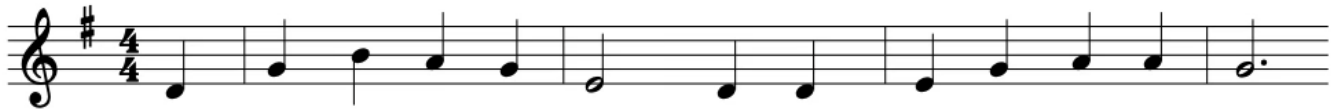
1. *Dat pa - nis cáe - li-cus fi - gú - ris tér - mi - num.*
3. *Sic nos tu ví - si-ta, si - cut te có - li - mus.*



2. *Pau - per, Pau - per, ser - vus, et hú - mi - lis.*
4. *lu - cem, Ad lu - cem quam in - há - bi - tas.*

HYMN OF PRAISE

O SACRAMENT MOST HOLY



1. O Je - sus, we a - dore you, Who in your love di - vine,
2. O Je - sus, we a - dore you, Our vic - tim and our priest,
3. O Je - sus, we a - dore you, Our Sav - ior and our King,
4. O Je - sus, we a - dore you; Come, live in us, we pray,
5. O come, all you who la - bor In sor - row and in pain;



Con - ceal your might - y God - head In forms of bread and wine.
 Whose pre - cious blood and bod - y Be - come our sa - cred feast.
 And with the saints and an - gels Our hum - ble hom - age bring.
 That all our thoughts and ac - tions Be yours a - lone to - day.
 Come, eat this bread from heav - en; Your peace and strength re - gain.



O sac - ra - ment most ho - ly, O sac - ra - ment di - vine,



All praise and all thanks - giv - ing Be ev - 'ry mo - ment thine!

Text: Irvin Udulutsch; refrain from the *Raccolta*
 Tune: FULDA MELODY, 7 6 7 6 with refrain; Fulda *Gesangbuch*; arr. by Charles G. Frischmann

All rights Reserved. Reprinted under One License A-607411

RECESSIONAL

I AM THE BREAD OF LIFE (5:30PM & 8AM)



1. _____ I am the Bread of life. You who
2. The bread that _____ I will give is my
3. Un - less _____ you _____ eat of the
4. _____ I am the Res - ur - rec - tion, _____
5. Yes, Lord, _____ I be - lieve that _____



come to me shall not hun - ger; and who be -
 flesh for the life of the world, and if you
 flesh of the Son of Man and
 I am the life. If you be -
 you are the Christ, the



lieve in me shall not thirst. No one can come to
 eat of this bread, you shall live for
 drink of his blood, and drink of his
 lieve in me, e - ven though you
 Son of God, Who has



me un - less the Fa - ther beck - ons.
 ev - er, you shall live for ev - er.
 blood, you shall not have life with - in you.
 die, you shall live for ev - er.
 come in - to the world.



And I will raise you up, and I will



raise you up, and I will raise you



up on the last day.

Text: John 6; Suzanne Toolan, SM, b.1927
 Tune: BREAD OF LIFE, Irregular with refrain; Suzanne Toolan, SM, b.1927
 © 1966, 1970, 1986, 1993, GIA Publications, Inc.

RECEIVE CUSTOMIZED TEXT & EMAIL UPDATES

Find out about all our groups, weekly series, & ministries and choose what info you'd like to receive from them.

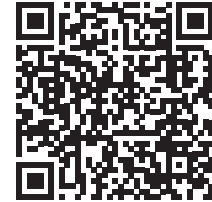
SIGN-UP OPTION 1

TEXT **MARYPC** to **84576** from your phone

SIGN-UP OPTION 2

VISIT StMarysParkCity.com/DIGITAL-CONTENT

LISTEN TO THIS WEEKEND'S HOMILY FROM FR. DASS



STAFF LEADERSHIP

Pastor

Fr. Arokia Dass David
frdass@stmarysparkcity.com

Parochial Vicar

Fr. Kenneth Rey Parsad
frparsad@stmarysparkcity.com

OCIA & Baptism

Deacon Tom Tosti
(435) 783-5831 - ttosti@stmarysparkcity.com

St. Mary's Parish Administrator

Sandy Foley
(435) 940-5455 - sfoley@stmarysparkcity.com

St. Lawrence Administrator & Parish Communications

Justin Hibbard
(410) 353-1022 - jhibbard@stmarysparkcity.com

Director of Charity

Maria Villar
(801) 652-5039 - mvillar@stmarysparkcity.com

St. Mary's Dir. of Rel. Ed. & Safe Environment

Lauri Hawkins
(435) 940-5453 - lhawkins@stmarysparkcity.com

St. Lawrence Dir. of Rel. Ed. & Save Environment

Andreina Payan
andreina@saintlawrenceheber.com

Dir. of Evangelization

Anthony Jewett
(435) 237-5531 - ajewett@stmarysparkcity.com

Marriage Prep

Nancy Tosti
ntosti@stmarysparkcity.com

Receptionist and Dir. of Hispanic Ministry

Gracie Cortes
(435) 649-9676 - gcortes@stmarysparkcity.com

Director of St. Mary's Music Ministry

Joe Demers
saintmarysmusicministry@gmail.com

Baptism Classes at St. Lawrence (español)

Hugo Arrambide
harrambide2@msn.com

St. Lawrence Thrift Store Director

Bobbie Wolbach
(435) 657-0209
stlthriftstore@gmail.com



SCAN TO GIVE
TO ST. MARY'S

ONLINE GIVING

Easily and securely make your donation online with the ability to make automatic payments from a credit or debit card.

THANK YOU FOR YOUR GENEROSITY!



SCAN TO GIVE
TO ST. LAWRENCE