

# SAINT MARY'S CATHOLIC CHURCH • PARK CITY

1505 White Pine Canyon Rd. • Park City, UT 84060 • [StMarysParkCity.com](http://StMarysParkCity.com) • (435) 649-9676



JUNE 14, 2026  
ELEVENTH SUNDAY  
IN ORDINARY TIME

SUMMERTIME LUNCH BUNCH  
NIGHT AT THE MISSION THIS THURSDAY  
ST. LAWRENCE BUILDING UPDATE



# ST. LAWRENCE

CATHOLIC MISSION • HEBER CITY

5 South 100 West • Heber City, UT 84032 • [StMarysParkCity.com](http://StMarysParkCity.com) • (435) 654-4035

# WELCOME TO ST. MARY'S PARISH

In 1881, God gave a small group of miners a mission to bring to these mountains the world's greatest treasure: the Body and Blood of Jesus Christ, the Eucharist, and the Faith and Charity that flow from Him.

Today, that mission has spread from the streets of Old Town Park City, to the meadows of White Pine Canyon, to the Heber Valley and beyond. St. Mary's Parish and St. Lawrence Mission seeks to evangelize, catechize, give back in Charity,

and enrich the community through the Catholic Faith and its intellectual, artistic, and cultural traditions. To bring all the treasure of Jesus Christ, for the salvation of souls, and the Greater Glory of God!

*Newcomers and Visitors: Thank you for joining us. We invite you to learn more about St. Mary's Church at our website: [StMarysParkCity.com](http://StMarysParkCity.com).*

## BRINGING THE WORLD'S GREATEST TREASURE TO THE WASATCH BACK + SINCE 1881 +

### MASS TIMES, CONFESSION, ADORATION, & VISITING HOURS



#### ST. MARY OF THE ASSUMPTION

1505 White Pine Canyon Rd, Park City 84060  
(435) 649-9676 - [StMarysParkCity.com](http://StMarysParkCity.com)

Office Hours (Mon-Thur) 8:30 AM - 5:00 PM

Saturday English Mass: 8 AM (1<sup>st</sup> Saturdays), 5:30 PM

Sunday English Mass: 8:00 AM, 10:30 AM

Domingo Misa en Español: 1:00 PM

Confession: Mon, Thurs, Sat 4:30 - 5:30 PM

Adoration Holy Hour: Mon 4:30 PM

*For Sunday Latin Mass and Vespers info, visit the website at [StMarysParkCity.com/Latin](http://StMarysParkCity.com/Latin).*

Visiting Hours: Mon - Fri 7 AM - 8 PM

#### ST. MARY'S OLD TOWN CHAPEL

121 Park Ave, Park City 84060

Daily Mass: Mon - Fri 8:00 AM

Adoration Holy Hour: Mon 4:30 PM | Thu 8:30 AM

Visiting Hours: Daily during daylight hours.



#### ST. LAWRENCE MISSION

5 South 100 West, Heber City 84032  
(435) 654-4035 - [StLawrenceMission.org](http://StLawrenceMission.org)

Office Hours (M/W) 9 AM - 5 PM, (Th) 9AM - 1 PM

Saturday English Mass: 5:00 PM

Sunday English Mass: 8:00 AM, 10:00 AM

Domingo Misa en Español: 12:00 PM

Daily Mass: Mondays and Thursdays 9:30 AM

Misa en Español: Miércoles 6:00 PM

Confession: Mondays and Thursdays 10:00 AM

Adoration + Confession: Wed. 5:00 PM - 6:00 PM

Visiting Hours: Mon - Fri 6 AM - 8 PM

#### ST. LAWRENCE THRIFT STORE

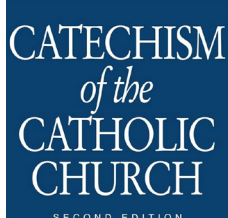
84 S 100 W, Heber City, UT 84032

(435) 657-0209 - [StLawrenceThriftStore.com](http://StLawrenceThriftStore.com)

Wed - Fri 10:00 AM - 6:00 PM, Sat 10:00 AM - 5:00 PM

FOR UPCOMING LITURGIES, VISIT [STMARYSPARKCITY.COM/LITURGY](http://STMARYSPARKCITY.COM/LITURGY)

# THIS WEEK AT A GLANCE



FAITH AND LIFE CATECHESIS & COMMUNITY

SUNDAYS AFTER THE 10:30 AM MASS  
ST. MARY'S PARISH CENTER



ABBA WOMEN'S PRAYER GROUP

MONDAYS AT 6:30 PM  
ST. LAWRENCE (ST. JOSEPH'S ROOM)



WOMEN'S BIBLE STUDY

TUESDAYS AT 5 PM  
ST. MARY'S PARISH CENTER ROOM 103



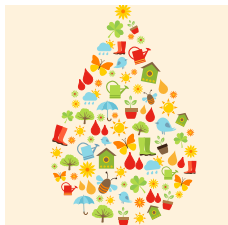
SUMMERTIME LUNCH BUNCH

ST. MARY'S PARISH CENTER FOR CHILDREN ENTERING K-4  
WEDNESDAYS 11AM - 3PM



NIGHT AT THE MISSION (TALK & POTLUCK)

ST. LAWRENCE  
THURSDAY AT 6:30PM



KNIGHTS OF COLUMBUS BLOOD DRIVE

FRIDAY, JUNE 19 - 1-6PM  
WASATCH COUNTY SENIOR CENTER



JOIN A COMMUNITY GROUP

ST. MARY'S & ST. LAWRENCE OFFERS MANY COMMUNITY  
GROUPS. FIND YOURS AT [STMARYSPARKCITY.COM/GROUPS](http://STMARYSPARKCITY.COM/GROUPS)

ABOUT THE COVER:

Title: The Good Shepherd | Artist: William Dyce 1806-1864

# SUMMERTIME LUNCH BUNCH

## FOR CHILDREN ENTERING GRADES K-4

AT ST. MARY'S  
WEDNESDAYS 11AM - 3PM  
JUNE 17-AUGUST 5

Each week we will explore a new theme through bible lessons, games & crafts. We will unwind with a child-friendly movie and a lunch of pizza and dessert will be served. A simple and fun way to stay connected with our St. Mary's community.

No cost and no ongoing commitment.

RSVP each week no later than Tuesday on the weeks you want to attend, either by email or text [lhawkins@stmarysparkcity.com](mailto:lhawkins@stmarysparkcity.com) or 619-548-1746.

\*Older students and parents are welcome to volunteer to help and join the fun.



---

# FAITH AND LIFE

## CATECHESIS & COMMUNITY

EVERY SUNDAY AFTER THE 10:30AM MASS AT ST. MARY'S

NEW TO ST. MARY'S?  
WANT TO KNOW MORE ABOUT THE CATHOLIC FAITH?  
WANT TO DEEPEN YOUR CONNECTION TO YOUR FAITH AND YOUR COMMUNITY?

St. Mary's is introducing Faith and Life - a new opportunity for everyone at the parish to learn more about the Catholic Faith, from long-time parishioners to those who are just starting to investigate Catholicism. After the 10:30 AM Sunday Mass, grab a coffee and a donut, and join us in the Social Hall to learn more about the Catechism, have your questions about the faith answered, and connect with new parishioners amidst a growing community here at St. Mary's. Learn about all that the parish is doing, upcoming events, and how to get more involved. For more information, contact Director of Evangelization Anthony Jewett at [ajewett@stmarysparkcity.com](mailto:ajewett@stmarysparkcity.com)

**Faith and Life Series (June 14-July 5): Man's Capacity for God.**  
**Scan the QR code to sign up for updates.**



# NIGHT AT THE MISSION HOPE IN THE MIDDLE EAST ENCOUNTERS WITH THE RISEN CHRIST STORIES OF FAITH AND CONVERSION IN OUR WORLD TODAY MEAL + TALK + Q&A + COMMUNITY

## ST. LAWRENCE

THURSDAY JUNE 18  
AT 6:30 PM

Our Lord lived and walked among us at a real time and in a real place on earth. Today, the land Christ and His closest followers once called home remains a place of struggle and instability, but also of hope. Join us for our monthly Night at the Mission at St. Lawrence to learn more about Christianity in the Middle East today, the growing wave of conversions, and what it means for us. Bring a dish to share, connect with fellow parishioners, receive updates on parish life, and hear from our parish leaders about the hope still rising from the Middle East.

**St. Mary's Potlucks are generally held on the first Thursday of the month. And St. Lawrence's Potlucks are held on the third Thursday of the month. Enjoy a brief talk, Q&A, meal and community with your St. Mary's & St. Lawrence community.**



### **Blood Drive** **Knights of Columbus** **Wasatch County Senior Center**

Meeting Room/Open Area  
465 East 1200 South  
Heber City, UT 84032

**Friday, June 19, 2026**  
**1:00 p.m. to 6:00 p.m.**

Please visit [RedCrossBlood.org](https://RedCrossBlood.org) and enter: Heber to schedule an appointment.

Come to give blood 6/1-28 for a \$15 e-gift card + chance to win a \$7.5K prize! See [rcblood.org/June](https://rcblood.org/June).



Scan to schedule an appointment.

**Give Blood.**

1-800-RED CROSS | [RedCrossBlood.org](https://RedCrossBlood.org) | Download the Blood Donor App

© 2026 The American National Red Cross | 517301-3 CW

# JULY TALK & POTLUCK



MEAL + TALK + Q&A + COMMUNITY

ST. MARY'S  
THURSDAY, JULY 2  
6:30 PM

ST. LAWRENCE  
THURSDAY, JULY 16  
6:30 PM

Join Justin Hibbard, St. Mary's/St. Lawrence staff member and host of the Why Catholic? podcast, as he presents on the 21 Ecumenical Councils. Given the hundreds of thousands of councils that have met in the history of the Church, what makes these 21 stand out? In this talk, you'll learn about the controversies that led the Church to convene these councils, what the councils decided, and what reforms came out of these councils.



**St. Mary's Potlucks are generally held on the first Thursday of the month. And St. Lawrence's Potlucks are held on the third Thursday of the month. Enjoy a brief talk, Q&A, meal and community with your St. Mary's & St. Lawrence community.**

# THANK YOU FOR HELPING US REACH \$1 MILLION TO BUILD A NEW ST. LAWRENCE MISSION

Thanks to God's faithfulness and your generosity, we have crossed the \$1 million mark in our building fund. While we still have about \$13 million more to raise, that represents more than a 37% increase in less than a year. There's more good news. While raising money for the building, we also have to continue collecting offertory to pay our regular expenses. Thanks also to your generosity, we have exceeded our expected income and have remained below expenses. Thank you for your generosity and support of St. Lawrence Mission.



SCAN TO GIVE TO THE ST.  
LAWRENCE BUILDING FUND

---

## 20TH ANNUAL FALL FESTIVAL SEPTEMBER 12TH

SAVE THE DATE FOR THE ANNUAL FALL FESTIVAL

ALL PROCEEDS GO TOWARDS THE BUILDING FUND

50/50 OPPORTUNITY TICKETS ARE AVAILABLE IN THE BACK AFTER MASS  
\$5/TICKET OR \$20/5 TICKETS

Volunteers needed to help solicit donations from local businesses,  
contact Carrie Perini at 614-580-8601  
To volunteer to help run the Fall Festival, contact Phil Congino at 435-503-0032

---

## WILL YOU ANSWER THE CALL TO SERVE JOIN OUR USHER MINISTRY

Ushers play an important role in the life of St. Mary's. Their ministry is more than a task - it is a profound act of hospitality. They are often the first to greet parishioners and guests and assists.

If you would be willing to commit to serving as an usher at Mass once per month, please contact, Joe Cronley, at [joeinpc@gmail.com](mailto:joeinpc@gmail.com). Training will be provided.

Thank you for considering serving in this important ministry."

# IN THE PATH OF FRENCH SAINTS

## PILGRIMAGE TO FRANCE | APRIL 12-22, 2027

WITH STOPS IN LISIEUX, NORMANDY, LOURDES  
MONT-SAINT-MICHEL, PARIS, AND TOULOUSE

Join St. Mary's staff member and host of the *Why Catholic?* podcast Justin Hibbard on an epic pilgrimage to France in April 2027. This pilgrimage will take us to the homes, convents, and tombs of some of the most influential saints: St. Thomas Aquinas, St. Dominic, St. Thérèse of Lisieux, St. Bernadette, St. Joan of Arc, St. Vincent de Paul, and more.



**Justin Hibbard**

In addition to daily talks given by Justin Hibbard on topics related to Catholic apologetics, our own Parochial Vicar Fr. Parsad will be leading us in private daily Masses in some of the most iconic churches, including the Abbey of Mont-Saint-Michel, Sacré-Cœur in Paris, and the Chapel of the Miraculous Medal.



**Fr. Kenneth Parsad**

This trip isn't about sight-seeing (though there will be plenty to see); it's about pursuing the heart of Jesus and letting Him transform our lives, as we follow the path of French Saints.

This trip is open to the public. All Catholics and Catholic-curious are welcome. Registration will be capped at about 50 people. All hotel accommodations, breakfasts, and dinners (except one evening) are included. Options are available to purchase group airfare or to travel on your own flight of choice.

FOR MORE INFORMATION & TO REGISTER, SCAN THE QR CODE OR GO TO [WHYCATHOLIC.SUBSTACK.COM/PILGRIMAGE](https://WHYCATHOLIC.SUBSTACK.COM/PILGRIMAGE)



# ENTRANCE HYMN

## O LOVE OF GOD

Bob Hurd

Refrain

O love of God, gath-er us, a - mor de  
 Dios, haz-nos u - no, that we may share the  
 gifts we are giv-en; pa - ra cons-tru - ir  
 la co - mu - ni - dad, pa - ra cons-tru -  
 ir la co - mu - ni - dad. 1-3 to Verses Final  
 dad.

Verses

1. En el a - gua de vi - da nos con-ver -  
 In the liv - ing wa - ter we have be -  
 2. Hay di - ver - sos do - nes, pe - ro un  
 Man - y gifts of the Spir - it, but the same  
 3. Haz-nos u - na fa - mi - lia que se  
 Make us all one fam - 'ly; bring us to -

to Refrain

1. ti - mos en cuer - po del Se - ñor.  
 come one bod - y in the Lord.  
 2. só - lo Dios que nos ins - pi - ra.  
 God who works them in us all.  
 3. u - ne por o - bras de tu a - mor.  
 geth-er to do the works of love.

Text: Based on 1 Corinthians 12:4-6, 12-13; Bob Hurd, Pia Moriarty, Ana Victoria Demezas and Jaime Cortez.  
 Text and music © 1994, Bob Hurd and Pia Moriarty. Published by OCP. All rights reserved.

# GLORIA

Mass of St. Frances Cabrini  
Kevin Keil

Glo-ry to God in the high-est, and on earth peace to peo-ple of good  
will. We praise you, we bless you, we a-dore you, we  
glo-ri-fy you, we give you thanks for your great glo-ry, Lord God,  
heav-en-ly King, O God, al-might-y Fa-ther. Lord  
Je-sus Christ, On-ly Be-got-ten Son, Lord God, Lamb of God,  
Son of the Fa-ther, you take a-way the sins of the world, have mer-cy on  
us; you take a-way the sins of the world, re-ceive our prayer; you are  
seat-ed at the right hand of the Fa-ther, have mer-cy on us. For  
you a-lone are the Ho-ly One, you a-lone are the Lord, you a-  
lone are the Most High, Je-sus Christ, with the Ho-ly Spir-it, in the  
glo-ry of God the Fa-ther. A - men. A - men.

# RESPONSORIAL PSALM

PSALM 100: 11TH SUNDAY IN ORDINARY TIME, YEAR A



**R. We are his peo - ple: the sheep of his flock.**

Text © 1969, 1981, 1997, ICEL. All rights reserved. Used with permission.

Music: Owen Alstott, © 1977, 1990, OCP. All rights reserved.

All rights Reserved. Reprinted under One License A-607411

*No collection is taken during Mass. You may give by using the envelopes in the pew in front of you.  
Thank you for your generosity.*

## PREPARATION OF GIFTS

### LOVE GOES ON

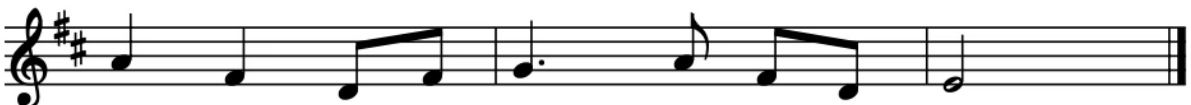
Bernadette Farrell



1. Love is pa - tient, love is kind, nev - er  
2. Love is faith - ful, love is true, ev - er  
3. Love a - lone has shaped our soul, and our  
4. Love our jour - ney, love our goal. Though our  
5. Love, our Sav - ior's one com - mand: "Love the  
6. There are three gifts that re - main when all



1. end - ing, nev - er end - ing; slow to an - ger, rich in  
2. joy - ful and for - giv - ing; love en - dures when life is  
3. hearts are al - ways rest - less un - til love be - comes our  
4. faith may move the moun - tains, love a - lone can heal the  
5. way that I have loved you," with a tow - el and a  
6. oth - er things have per - ished. On - ly faith, hope, love en -



1. mer - cy, love goes on be - yond all time.  
2. o - ver, love is old and love is new.  
3. pur - pose, new cre - a - tion to un - fold.  
4. bro - ken; on - ly love will make us whole.  
5. ba - sin, wash - ing feet with ser - vant hands.  
6. dur - ing, and the great - est gift is love.

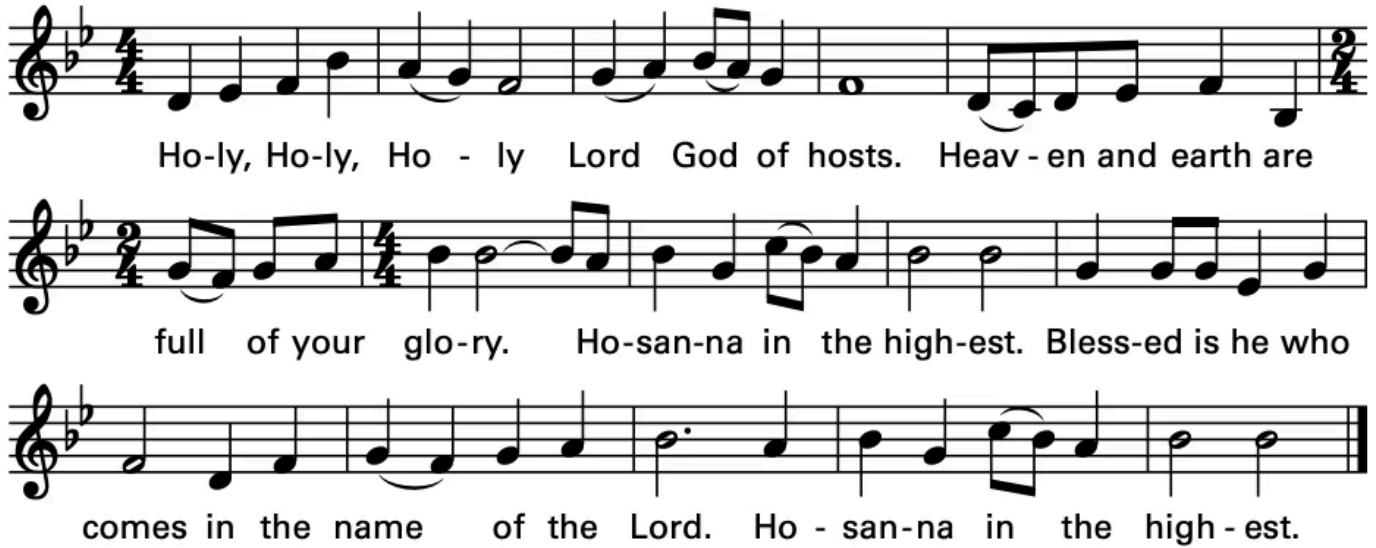
Text: Based on 1 Corinthians 13, John 13. Text and music © 2004, 2012, Bernadette Farrell.

Published by OCP. All rights reserved.

All rights Reserved. Reprinted under One License A-607411

# SANCTUS

Mass of St. Frances Cabrini  
Kevin Keil



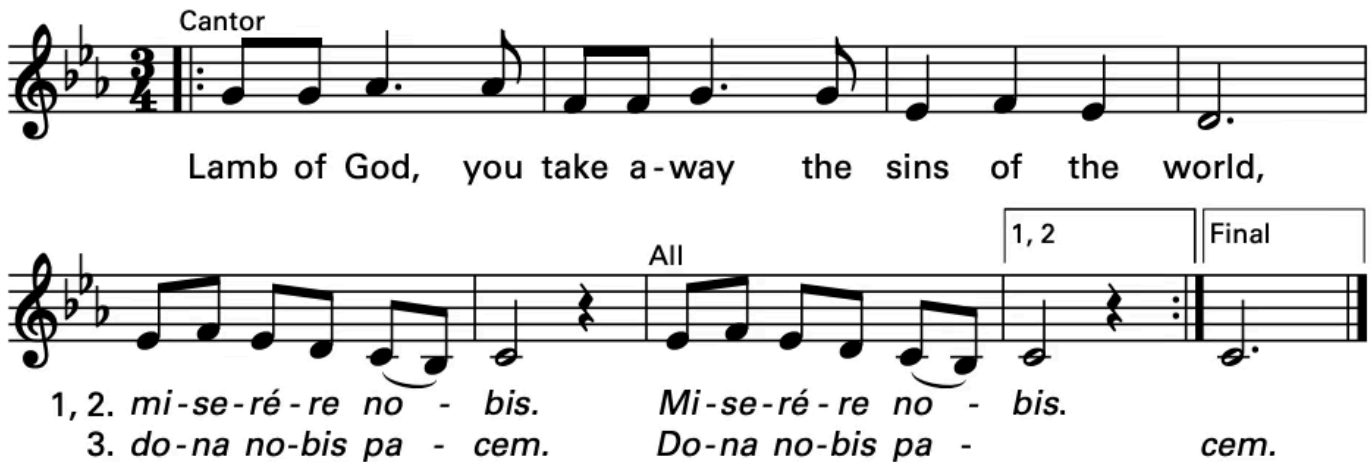
Ho-ly, Ho-ly, Ho - ly Lord God of hosts. Heav - en and earth are  
full of your glo-ry. Ho-san-na in the high-est. Bless-ed is he who  
comes in the name of the Lord. Ho - san-na in the high - est.

Text © 2010, ICEL. All rights reserved. Used with permission.  
Music © 2007, 2010, Kevin Keil (ASCAP). Published by OCP. All rights reserved.

All rights Reserved. Reprinted under One License A-607411

# AGNUS DEI LAMB OF GOD

Mass of St. Frances Cabrini  
Kevin Keil



Cantor  
Lamb of God, you take a-way the sins of the world,  
All  
1, 2 Final  
1, 2. *mi-se-ré-re no - bis. Mi-se-ré-re no - bis.*  
3. *do-na no-bis pa - cem. Do-na no-bis pa - cem.*

Music © 2007, 2010, Kevin Keil (ASCAP). Published by OCP. All rights reserved.

All rights Reserved. Reprinted under One License A-607411

# COMMUNION HYMN

## ON EAGLE'S WINGS

Michael Joncas

Verse 1

1. You who dwell in the shel-ter of the Lord, who a - bide in his

1. shad-ow for life, say to the Lord: "My ref-uge, my rock in whom I trust!"

to Refrain

Refrain

And he will raise you up on ea - gle's wings, bear you on the

breath of dawn, make you to shine like the

sun, and hold you in the palm of his hand.

to Verses (last time to Coda) ⊕

⊕ Coda

And hold you, hold you in the palm of his hand.

Verse 2

2. The snare of the fowl-er will nev-er cap-ture you, and fam-ine will bring

2. you no fear: un-der his wings your ref-uge, his faith-ful-ness your shield.

to Refrain

Verse 3

3. You need not fear the ter-ror of the night, nor the ar-row that flies by

3. day; though thou-sands fall a - bout you, near you it shall not come.

to Refrain

Text: Based on Psalm 91. Text and music © 1979, OCP. All rights reserved.  
All rights Reserved. Reprinted under One License A-607411

Verse 4

4. For to his an-gels he's giv-en a com-mand to

4. guard you in all of your ways; up - on their hands they will

4. bear you up, lest you dash your foot a- gainst a stone. to Refrain

# HYMN OF PRAISE

## GIVE THANKS TO THE LORD

Dan Schutte

Verses 1 & 2, 4 & 5, 7 & 8, 10

1. Give thanks to the Lord who does won - drous deeds, who  
 2. Give thanks to the God who has blessed our land, who  
 4. Give thanks to the God of the sum - mer rains, who  
 5. Give thanks to the Lord who is mer - ci - ful, whose  
 7. Give thanks to the Lord for the blaz - ing sun, for  
 8. Give thanks to the Lord for the crim - son skies, for  
 10. Give thanks to the God who has set us free, who

1. mas - ters the winds and the rag - ing seas,  
 2. guards ev - 'ry step with a might - y hand,  
 4. spreads out the hills and the gold - en plains,  
 5. kind - ness is wide and love boun - ti - ful,  
 7. great, roll - ing waves where the dol - phins run,  
 8. wild, wind - y heights where the ea - gle flies,  
 10. raised us to life on a bless - ed tree, } whose

love is for ev - er, whose love is for ev - er, whose love is for

1, 4, 7, Final      Fine      2, 5, 8

ev - er more!      more!

Verses 3, 6, 9



3. O, bless the Lord for ev-'ry gift that comes to grace our way. And  
6. O, bless the Lord with mu-sic, ev - 'ry crea-ture great and small. And  
9. O, bless the Lord all peo-ple, for the mu - sic of the skies. And



3. praise the God of faith-ful-ness, who comes to light our day. (to Vss 4 & 5)  
6. sing through all the a - ges of God's fa - vor to us all. (to Vss 7 & 8)  
9. tell the won-drous sto-ry of a love that nev - er dies. (to Vs 10)

© 1992, Daniel L. Schutte. Published by OCP. All rights reserved.

All rights Reserved. Reprinted under One License A-607411

## RECESSIONAL FAITH OF OUR FATHERS

ST. CATHERINE

Verses



1. Faith of our fa - thers! liv - ing still In spite of dun-geon, fire, and sword.  
2. Faith of our fa - thers! we will strive To win all na-tions un - to thee.  
3. Faith of our fa - thers! we will love Both friend and foe in all our strife,



1. O how our hearts beat high with joy When-e'er we hear that glo -  
2. And through the truth that comes from God We all shall then be tru -  
3. And preach thee, too, as love knows how By kind-ly words and vir -

Refrain



1. rious word! Faith of our fa-thers, ho - ly faith! We will be true to thee till death.  
2. ly free:  
3. tuous life:

Text: LM with refrain; Frederick W. Faber, 1814–1863, alt.  
Music: Henry F. Hemy, 1818–1888; adapt. by James G. Walton, 1821–1905.

All rights Reserved. Reprinted under One License A-607411

## RECEIVE CUSTOMIZED TEXT & EMAIL UPDATES

Find out about all our groups, weekly series, & ministries and choose what info you'd like to receive from them.

## SIGN-UP OPTION 1

TEXT **MARYPC** to **84576** from your phone

## SIGN-UP OPTION 2

VISIT [StMarysParkCity.com/DIGITAL-CONTENT](http://StMarysParkCity.com/DIGITAL-CONTENT)

## LISTEN TO THIS WEEKEND'S HOMILY FROM FR. DASS



### STAFF LEADERSHIP

#### Pastor

Fr. Arokia Dass David  
[frdass@stmarysparkcity.com](mailto:frdass@stmarysparkcity.com)

#### Parochial Vicar

Fr. Kenneth Rey Parsad  
[frparsad@stmarysparkcity.com](mailto:frparsad@stmarysparkcity.com)

#### OCIA & Baptism

Deacon Tom Tosti  
(435) 783-5831 - [ttosti@stmarysparkcity.com](mailto:ttosti@stmarysparkcity.com)

#### St. Mary's Parish Administrator

Sandy Foley  
(435) 940-5455 - [sfoley@stmarysparkcity.com](mailto:sfoley@stmarysparkcity.com)

#### St. Lawrence Administrator & Parish Communications

Justin Hibbard  
(410) 353-1022 - [jhibbard@stmarysparkcity.com](mailto:jhibbard@stmarysparkcity.com)

#### Director of Charity

Maria Villar  
(801) 652-5039 - [mvillar@stmarysparkcity.com](mailto:mvillar@stmarysparkcity.com)

#### St. Mary's Dir. of Rel. Ed. & Safe Environment

Lauri Hawkins  
(435) 940-5453 - [lhawkins@stmarysparkcity.com](mailto:lhawkins@stmarysparkcity.com)

#### St. Lawrence Dir. of Rel. Ed. & Save Environment

Andreina Payan  
[andreina@saintlawrenceheber.com](mailto:andreina@saintlawrenceheber.com)

#### Dir. of Evangelization

Anthony Jewett  
(435) 237-5531 - [ajewett@stmarysparkcity.com](mailto:ajewett@stmarysparkcity.com)

#### Marriage Prep

Nancy Tosti  
[ntosti@stmarysparkcity.com](mailto:ntosti@stmarysparkcity.com)

#### Receptionist and Dir. of Hispanic Ministry

Gracie Cortes  
(435) 649-9676 - [gcortes@stmarysparkcity.com](mailto:gcortes@stmarysparkcity.com)

#### Director of St. Mary's Music Ministry

Joe Demers  
[saintmarysmusicministry@gmail.com](mailto:saintmarysmusicministry@gmail.com)

#### Baptism Classes at St. Lawrence (español)

Hugo Arrambide  
[harrambide2@msn.com](mailto:harrambide2@msn.com)

#### St. Lawrence Thrift Store Director

Bobbie Wolbach  
(435) 657-0209  
[stlthriftstore@gmail.com](mailto:stlthriftstore@gmail.com)



SCAN TO GIVE  
TO ST. MARY'S

## ONLINE GIVING

*Easily and securely make your donation online with the ability to make automatic payments from a credit or debit card.*

THANK YOU FOR YOUR GENEROSITY!



SCAN TO GIVE  
TO ST. LAWRENCE