

# SAINT MARY'S CATHOLIC CHURCH • PARK CITY

1505 White Pine Canyon Rd. • Park City, UT 84060 • [StMarysParkCity.com](http://StMarysParkCity.com) • (435) 649-9676



MAY 3, 2026  
THE FIFTH SUNDAY  
OF EASTER

ST. LAWRENCE FIRST COMMUNION MASS  
FAITH & LIFE CATECHESIS  
PENTECOST IN THE HEBER PARK



ST. LAWRENCE  
CATHOLIC MISSION • HEBER CITY

5 South 100 West • Heber City, UT 84032 • [StMarysParkCity.com](http://StMarysParkCity.com) • (435) 654-4035

# WELCOME TO ST. MARY'S PARISH

In 1881, God gave a small group of miners a mission to bring to these mountains the world's greatest treasure: the Body and Blood of Jesus Christ, the Eucharist, and the Faith and Charity that flow from Him.

Today, that mission has spread from the streets of Old Town Park City, to the meadows of White Pine Canyon, to the Heber Valley and beyond. St. Mary's Parish and St. Lawrence Mission seeks to evangelize, catechize, give back in Charity,

and enrich the community through the Catholic Faith and its intellectual, artistic, and cultural traditions. To bring all the treasure of Jesus Christ, for the salvation of souls, and the Greater Glory of God!

*Newcomers and Visitors: Thank you for joining us. We invite you to learn more about St. Mary's Church at our website: [StMarysParkCity.com](http://StMarysParkCity.com).*

## BRINGING THE WORLD'S GREATEST TREASURE TO THE WASATCH BACK + SINCE 1881 +

### MASS TIMES, CONFESSION, ADORATION, & VISITING HOURS



#### ST. MARY OF THE ASSUMPTION

1505 White Pine Canyon Rd, Park City 84060  
(435) 649-9676 - [StMarysParkCity.com](http://StMarysParkCity.com)

Office Hours (Mon-Thur) 8:30 AM - 5:00 PM

Saturday English Mass: 8 AM (1<sup>st</sup> Saturdays), 5:30 PM

Sunday English Mass: 8:00 AM, 10:30 AM

Domingo Misa en Español: 1:00 PM

Daily Mass: Mon - Fri 8:00 AM

Confession: Mon, Thurs, Sat 4:30 - 5:30 PM

Adoration Holy Hour: Mon 4:30 PM | Thu 8:30 AM

*For Sunday Latin Mass and Vespers info, visit the website at [StMarysParkCity.com/Latin](http://StMarysParkCity.com/Latin).*

Visiting Hours: Mon - Fri 7 AM - 8 PM

#### ST. MARY'S OLD TOWN CHAPEL

121 Park Ave, Park City 84060

Visiting Hours: Daily during daylight hours.



#### ST. LAWRENCE MISSION

5 South 100 West, Heber City 84032  
(435) 654-4035 - [StLawrenceMission.org](http://StLawrenceMission.org)

Office Hours (M/W) 9 AM - 5 PM, (Th) 9AM - 1 PM

Saturday English Mass: 5:00 PM

Sunday English Mass: 8:00 AM, 10:00 AM

Domingo Misa en Español: 12:00 PM

Daily Mass: Mondays and Thursdays 9:30 AM

Misa en Español: Miércoles 6:00 PM

Confession: Mondays and Thursdays 10:00 AM

Adoration + Confession: Wed. 5:00 PM - 6:00 PM

Visiting Hours: Mon - Fri 6 AM - 8 PM

#### ST. LAWRENCE THRIFT STORE

84 S 100 W, Heber City, UT 84032  
(435) 657-0209 - [StLawrenceThriftStore.com](http://StLawrenceThriftStore.com)

Wed - Fri 10:00 AM - 6:00 PM, Sat 10:00 AM - 5:00 PM

FOR UPCOMING LITURGIES, VISTI [STMARYSPARKCITY.COM/LITURGY](http://STMARYSPARKCITY.COM/LITURGY)

# THIS WEEK AT A GLANCE



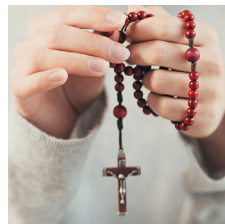
## ADORATION

ST. MARY'S - MONDAYS AT 4:30PM, THURSDAYS AT 8:30AM  
ST. LAWRENCE - WEDNESDAYS AT 5PM



## ENDOW FOR HIGH SCHOOL GIRLS

TONIGHT (SUNDAY) - 5:45 - 7:15PM  
AT ST. LAWRENCE (ST. JOSEPH'S ROOM)



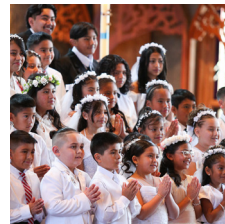
## ABBA WOMEN'S PRAYER GROUP

MONDAYS AT 6:30 PM  
ST. LAWRENCE (ST. JOSEPH'S ROOM)



## WOMEN'S LENTEN BIBLE STUDY

TUESDAYS AT 5 PM  
ST. MARY'S PARISH CENTER ROOM 103



## FIRST COMMUNION MASS (ST. LAWRENCE STUDENTS)

SATURDAY, MAY 9 AT 10 AM  
AT ST. MARY'S



## JOIN A COMMUNITY GROUP

ST. MARY'S & ST. LAWRENCE OFFERS MANY COMMUNITY GROUPS. FIND YOURS AT [STMARYSPARKCITY.COM/GROUPS](http://STMARYSPARKCITY.COM/GROUPS)



Have a group or event that you would like to be included in the bulletin?  
Scan the QR code and fill out the form.

### ABOUT THE COVER:

Title: The Seven Deacons | Artist: Fra Angelico (1395-1455)  
Type: Frescol | Location: Niccoline Chapel

# RELIGIOUS ED

## ST. LAWRENCE FIRST COMMUNION

**May 9th at 10 AM  
at St. Mary's Catholic Church**

*Congratulations to our students who received their sacraments of Confirmation and First Communion. Thank you catechists and parents for all your support.*

---

## GROW BEYOND MASS

**GROW IN YOUR LOVE FOR GOD  
GROW IN YOUR CATHOLIC FAITH  
GROW THROUGH RELATIONSHIPS**

## JOIN A COMMUNITY GROUP

**FIND A COMMUNITY GROUP AT  
[STMARYSPARKCITY.COM/GROUPS](http://STMARYSPARKCITY.COM/GROUPS)**

Whether you live in Summit or Wasatch County, there's a community group for you - Bible studies, prayer groups, and demographic-specific groups. Take your faith beyond Mass and get plugged-in to one of our many community groups. Find your group at [stmarysparkcity.com/groups](http://stmarysparkcity.com/groups).

*For more information, to begin a new group, or to have your group listed on our website, contact our Director of Evangelization - Anthony Jewett at [ajewett@stmarysparkcity.com](mailto:ajewett@stmarysparkcity.com).*

# PENTECOST IN THE PARK

**ST. LAWRENCE MISSION  
SUNDAY, MAY 24 AT 10 AM  
HEBER MAIN STREET PARK**

Celebrate the birthday of the Church with one multilingual, outdoor Mass, followed by a cookout, sponsored by the St. Lawrence Knights of Columbus. Bring blankets and camping chairs for seating.

*Saturday's 5PM Vigil Mass will be held as normal.  
No 8AM or 12PM Mass on Sunday.*



---

# YOUNG ADULTS

**JOIN OUR ST. MARY'S MINISTRY**  
**FOR AGES 21-35**

**MONTHLY PRAYER & SOCIAL EVENTS**

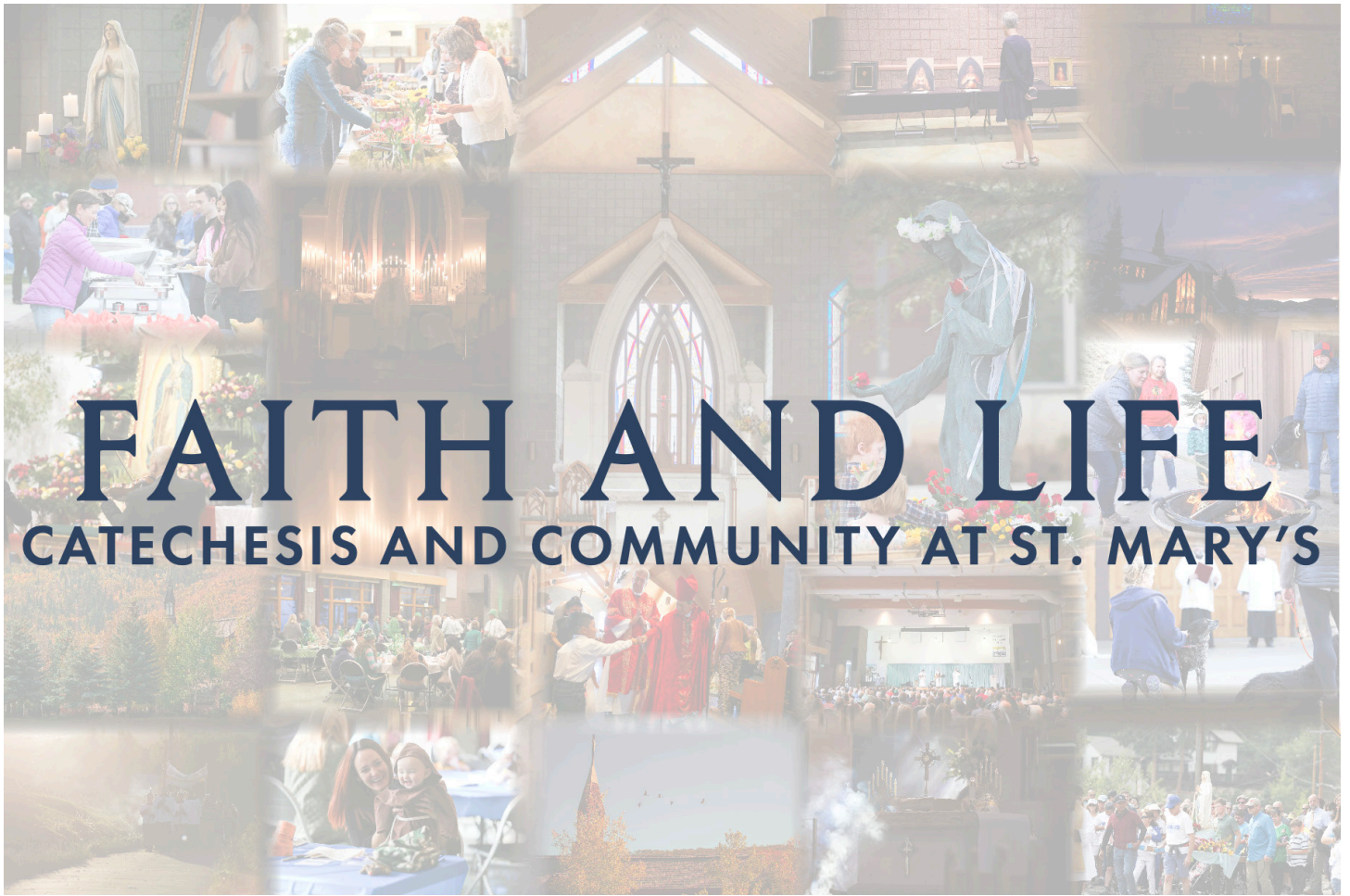
**CONNECT WITH YOUNG CATHOLICS  
THROUGHOUT THE DIOCESE**

**DIVE DEEPER INTO PARISH LIFE**



**SCAN THE QR CODE TO REGISTER**

*For more information, please contact Director of Evangelization -  
Anthony Jewett - [ajewett@stmarysparkcity.com](mailto:ajewett@stmarysparkcity.com)*



## FAITH AND LIFE: CATECHESIS AND COMMUNITY AT ST. MARY'S EVERY SUNDAY AFTER THE 10:30AM MASS

NEW TO ST. MARY'S?

WANT TO KNOW MORE ABOUT THE CATHOLIC FAITH?

WANT TO DEEPEN YOUR CONNECTION TO YOUR FAITH AND YOUR COMMUNITY?

Starting May 10, St. Mary's is introducing Faith and Life - a new opportunity for everyone at the parish to learn more about the Catholic Faith, from long-time parishioners to those who are just starting to investigate Catholicism. After the 10:30 AM Sunday Mass, grab a coffee and a donut, and join us in the Social Hall to learn more about the Catechism, have your questions about the faith answered, and connect with new parishioners amidst a growing community here at St. Mary's. Learn about all that the parish is doing, upcoming events, and how to get more involved.

**This month's Faith and Life Series: An Introduction to the Catechism of the Catholic Church**

# MAJOR EASTER GIVING OPPORTUNITIES

*Looking to make a major gift this Easter season? Please consider the following opportunities!*

---

## HELP REPLACE THE ST. MARY'S ROOF



The original roof of St. Mary's Church will need to be replaced this summer.

**\$850,000 has already been pledged for this \$1 million project. Your generous Easter gift to help raise the final \$150,000 needed will ensure this beautiful church, this sanctuary of Park City, can continue to welcome all to worship, to gather, and to receive the Body of Christ! Thank you!**

---

## SUPPORT THE DDD

The Diocesan Development Drive (DDD) is the best way you can support the greater Catholic Church in Utah! Your gifts help form the future priests of Utah, like our own seminarian Michael Weight and our own recently ordained Fr. Kenneth Parsad. Your support helps feed struggling families and children through Catholic Community Services of Utah. And your generosity provides for the less fortunate Catholic communities!

**The Diocese of Salt Lake City has set St. Mary's 2026 DDD Quota at \$348,000 and St. Lawrence's DDD Quota at \$34,000. Our parish is required to pay the difference between what is given and the actual quota. Your generous gift will help raise what's still needed.**

**Thank you!**



**SCAN THE QR CODE TO GIVE DIRECTLY TO THE DDD. PLEASE SELECT SAINT MARY OF THE ASSUMPTION (2089) OR SAINT LAWRENCE MISSION (22026) TO ENSURE WE RECEIVE CREDIT FOR YOUR GIFT.**

# HELP US BRING THE BODY & BLOOD OF JESUS CHRIST TO THE WASATCH BACK

---

## HELP BUILD A NEW ST. LAWRENCE MISSION



As the Heber Valley continues to grow, it is clear that the St. Lawrence community has outgrown our beautiful, historic church.

Bishop Solis has given us approval to move forward with the next steps of the building project. The new church will be built on an already owned 6 acre lot at the bustling intersection of Mill Rd. and Old Mill Dr. about 2 miles from the current church. Bishop Solis' vision is for St. Lawrence to continue to be a mission church of St. Mary's and that the new church will accommodate 600 people for Mass in addition to ample classroom and gathering space. In order to break ground, we will need to raise a total of \$14 million. We currently have a little over \$900,000 in our building fund (an increase of over 20% since July 1, 2025).

On Easter Sunday, 250 people packed St. Lawrence (which seats about 130 people). The downstairs classroom, which we use for overflow space was so full that we had to set up chairs in the hallway. Our weekend masses are getting fuller each week, regularly requiring the use of overflow space.

St. Lawrence's religious ed program is also filled to capacity with over 250 registered students (about the same number as St. Mary's).

SCAN TO GIVE TO THE ST. LAWRENCE BUILDING FUND

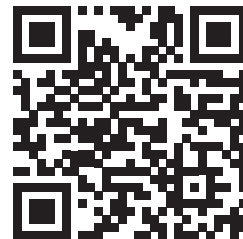


---

## MAKE YOUR EASTER GIFT ONLINE



ST. MARY'S - PARK CITY



ST. LAWRENCE - HEBER CITY

**StMarysParkCity.com/GIVE**

**or text STMARY GIVE to (833) 858-3376**

# ENTRANCE HYMN

## MORNING HYMN



1. Morn - ing has bro - ken Like the first morn - ing, Black-bird has  
 2. Sweet the rain's new fall Sun - lit from heav - en, Like the first  
 3. Mine is the sun - light! Mine is the morn - ing Born of the



spo - ken Like the first bird. Praise for the sing - ing! Praise for the  
 dew - fall On the first grass. Praise for the sweet - ness Of the wet  
 one light E - den saw play! Praise with e - la - tion, Praise ev - 'ry



morn - ing! Praise for them, spring - ing Fresh from the Word!  
 gar - den, Sprung in com - plete - ness Where his feet pass.  
 morn - ing, God's re - cre - a - tion Of the new day!

Text: Eleanor Farjeon, 1881–1965, *The Children's Bells*

Tune: BUNESSAN, 5 5 5 4 D; Gaelic melody; acc. by Robert J. Batastini, b.1942, © 1999, GIA Publications, Inc.

All rights Reserved. Reprinted under One License A-607411

# GLORIA

Introduction ♩ = 100

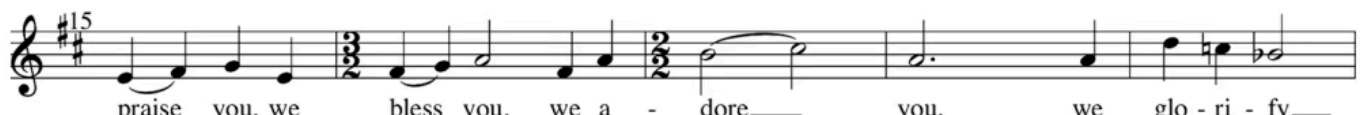
Glory to God

MASS FOR A SERVANT CHURCH  
 MICHEL GUIMONT

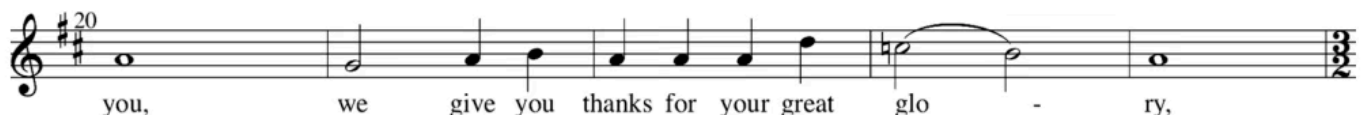
PIANO INTRO



*f* All Glo - ry to God in the high - est, and on earth peace to peo - ple of good will. *mf* We



praise you, we bless you, we a - dore— you, we glo - ri - fy—



you, we give you thanks for your great glo - ry,

Lord God, heav-en - ly King, — O God, al - migh - ty Fa - ther.  
 Lord Je - sus Christ, On - ly Be - got - ten Son, —  
 Lord God, Lamb of God, Son of the Fa - ther, *mf* you take a-way the  
 sins of the world, have mer - cy on us; *f* you take a - way the  
 sins of the world, re - ceive our prayer; you are seat - ed at the  
 right hand of the Fa - ther, have mer - cy on us. *piano*  
*mf* For you a - lone are the Ho - ly One, you a - lone are the Lord,  
 you a - lone are the Most — High, Je - sus Christ,  
 with the Ho - ly Spir - it, — in the glo - ry of God the Fa - ther.  
 A - men, a - men, a — *rit.* men.

All rights Reserved. Reprinted under One License A-607411

## RESPONSORIAL PSALM

### PSALM 33: FIFTH SUNDAY OF EASTER, YEAR A

**R. Lord, let your mer - cy be on us, as we place our trust in you.**

Text © 1969, 1981, 1997, ICEL. All rights reserved. Used with permission.  
 Music: Owen Alstott, © 1977, 1990, OCP. All rights reserved.

All rights Reserved. Reprinted under One License A-607411

No collection is taken during Mass. You may give by using the envelopes in the pew in front of you.  
Thank you for your generosity.

# PREPARATION OF GIFTS

## WHERE MY FATHER LIVES

M.D. Ridge

Refrain

Where my Fa - ther lives there is room for all; there is  
room for all where my Fa-ther lives, and a place for  
you will be wait-ing there. Come to me: I will bring you

Verses

home.

1. I am the Way, the Truth and the Life.
2. Have faith in God; have faith \_\_\_ in me.
3. If you love me and keep my com-mands,
4. Peace \_\_\_ I leave, my peace \_\_\_ I give.

to Refrain

1. No one comes to the Fa - ther ex - cept through me.
2. Know wher - ev - er I am, you will al - so be.
3. I will not leave you or - phan'd: I will re - turn.
4. God's own Spir - it will guide you through - out your life.

© 2003, M.D. Ridge. Published by OCP. All rights reserved.

All rights Reserved. Reprinted under One License A-607411

# SANCTUS

## Holy, Holy, Holy

♩ = 100

MASS FOR A SERVANT CHURCH  
MICHEL GUIMONT

*PIANO INTRO*

*mf* Ho - ly, Ho - ly, Ho - ly Lord God of Hosts. Heav'n and earth are full of your glo - ry. Ho - san - na in the high - est. *mf* Bless - ed is he who comes in the name of the Lord. *f* Ho - san - na in the high - est.

*cresc.* *rit.*

All rights Reserved. Reprinted under One License A-607411

# AGNUS DEI

## LAMB OF GOD

*mp* Lamb of God, you take a-way the sins of the world, have mer - cy on us. Lamb of God, you take a - way the sins of the world, have mer - cy on us. Lamb of God, you take a-way the sins of the world, *rit.* grant us peace.

All rights Reserved. Reprinted under One License A-607411

# COMMUNION HYMN

## BREAD OF ANGELS

Curtis Stephan



1. Bread of an - gels, we re - ceive you; with us
2. Cup of Mer - cy o - ver - flow - ing, fill us
3. Word in - car - nate, dwell with - in us; pierce our
4. Though un - wor - thy, we re - ceive you, sac - ra -



1. now a - bide. Pre - cious Je - sus, man - na of
2. with your grace; wine of pas - sion, O Son be -
3. hard - ened hearts. Ten - der Je - sus, Love so
4. ment di - vine. Bread of an - gels, ac - cept our



1. a - ges, with us now re - side.
2. got - ten, we flee to your em - brace.
3. gen - tle, nev - er let us part.
4. prais - es, let your glo - ry shine!



1. *Pa - nis an - gé - li - cus fit pa - nis hó - mi - num,*
2. *O res mi - rá - bi - lis man - dú - cat Dó - mi - num,*
3. *Te, tri - na Dé - i - tas ú - na - que, pó - sci - mus,*
4. *Per tu - as sé - mi - tas duc nos quo tén - di - mus,*

1, 3



1. *Dat pa - nis cáe - li - cus fi - gú - ris tér - mi - num.*
3. *Sic nos tu ví - si - ta, si - cut te có - li - mus.*

2, Final



2. *Pau - per, Pau - per, ser - vus, et hú - mi - lis.*
4. *lu - cem, Ad lu - cem quam in - há - bi - tas.*

# HYMN OF PRAISE

## TAKE AND EAT

Michael Joncas

Refrain



1

Take and eat; take and eat: this is my bod - y  
Take and drink; take and drink:




2

to Verses  
(Fine)

giv-en up for you. this is my blood giv-en up for you.


Verses



1. I am the Word that spoke and light was made;  
2. I am the way that leads the ex - ile home;  
3. I am the Lamb that takes a - way your sin;  
4. I am the cor - ner-stone that God has laid;  
5. I am the light that came in - to the world;  
6. I am the first and last, the Liv - ing One;



1. I am the seed that died to be re - born;  
2. I am the truth that sets the cap - tive free;  
3. I am the gate that guards you night and day;  
4. A cho - sen stone and pre - cious in his eyes;  
5. I am the light that dark - ness can - not hide;  
6. I am the Lord who died that you might live;



1. I am the bread that comes from heav'n a - bove;  
2. I am the life that rais - es up the dead;  
3. You are my flock: you know the shep-herd's voice;  
4. You are God's dwell - ing place, on me you rest;  
5. I am the morn - ing star that nev - er sets;  
6. I am the bride-groom, this my wed - ding song;



1. I am the vine that fills your cup with joy.
2. I am your peace, true peace my gift to you.
3. You are my own: your ran - som is my blood.
4. Like liv - ing stones, a tem - ple for God's praise.
5. Lift up your face, in you my light will shine.
6. You are my bride, come to the mar-riage feast.

Verses text © 1989, James Quinn, SJ. Published by OCP. All rights reserved.  
 Music and refrain text, Michael Joncas, © 1989, GIA Publications, Inc.  
 All rights reserved. Used with permission.

All rights Reserved. Reprinted under One License A-607411

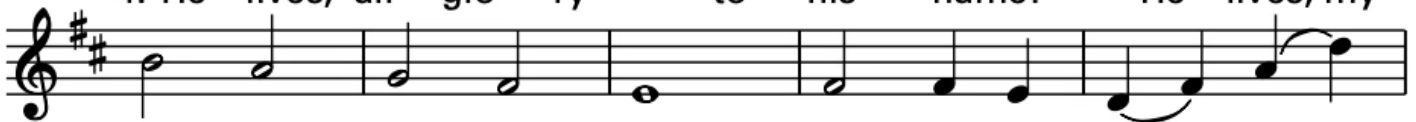
## RECESSIONAL

### I KNOW THAT MY REDEEMER LIVES

DUKE STREET



1. I know that my Re - deem - er lives! What joy the
2. He lives tri - um - phant from the grave; He lives e -
3. He lives to si - lence all my fears; He lives to
4. He lives, all glo - ry to his name! He lives, my



1. blest as - sur - ance gives! He lives, he lives, who
2. ter - nal - ly to save; He lives in maj - es -
3. wipe a - way my tears; He lives to calm my
4. Sav - ior, still the same; What joy this blest as -



1. once was dead; He lives, my ev - er - liv - ing head!
2. ty a - bove; He lives to guide his Church in love.
3. trou - bled heart; He lives all bless - ings to im - part.
4. sur - ance gives: I know that my Re - deem - er lives!

Text: LM; based on Job 19:25; Samuel Medley, 1738–1799.  
 Music: John Hatton, c. 1710–1793.

All rights Reserved. Reprinted under One License A-607411

## RECEIVE CUSTOMIZED TEXT & EMAIL UPDATES

Find out about all our groups, weekly series, & ministries and choose what info you'd like to receive from them.

## SIGN-UP OPTION 1

TEXT **MARYPC** to **84576** from your phone

## SIGN-UP OPTION 2

VISIT [StMarysParkCity.com/DIGITAL-CONTENT](http://StMarysParkCity.com/DIGITAL-CONTENT)

## LISTEN TO THIS WEEKEND'S HOMILY FROM FR. DASS



### STAFF LEADERSHIP

#### Pastor

Fr. Arokia Dass David  
[frdass@stmarysparkcity.com](mailto:frdass@stmarysparkcity.com)

#### Parochial Vicar

Fr. Kenneth Rey Parsad  
[frparsad@stmarysparkcity.com](mailto:frparsad@stmarysparkcity.com)

#### OCIA & Baptism

Deacon Tom Tosti  
(435) 783-5831 - [ttosti@stmarysparkcity.com](mailto:ttosti@stmarysparkcity.com)

#### St. Mary's Parish Administrator

Sandy Foley  
(435) 940-5455 - [sfoley@stmarysparkcity.com](mailto:sfoley@stmarysparkcity.com)

#### St. Lawrence Administrator & Parish Communications

Justin Hibbard  
(410) 353-1022 - [jhibbard@stmarysparkcity.com](mailto:jhibbard@stmarysparkcity.com)

#### Director of Charity

Maria Villar  
(801) 652-5039 - [mvillar@stmarysparkcity.com](mailto:mvillar@stmarysparkcity.com)

#### St. Mary's Dir. of Rel. Ed. & Safe Environment

Lauri Hawkins  
(435) 940-5453 - [lhawkins@stmarysparkcity.com](mailto:lhawkins@stmarysparkcity.com)

#### St. Lawrence Dir. of Rel. Ed. & Save Environment

Andreina Payan  
[andreina@saintlawrenceheber.com](mailto:andreina@saintlawrenceheber.com)

#### Dir. of Evangelization

Anthony Jewett  
(435) 237-5531 - [ajewett@stmarysparkcity.com](mailto:ajewett@stmarysparkcity.com)

#### Marriage Prep

Nancy Tosti  
[ntosti@stmarysparkcity.com](mailto:ntosti@stmarysparkcity.com)

#### Receptionist and Dir. of Hispanic Ministry

Gracie Cortes  
(435) 649-9676 - [gcortes@stmarysparkcity.com](mailto:gcortes@stmarysparkcity.com)

#### Director of St. Mary's Music Ministry

Joe Demers  
[saintmarysmusicministry@gmail.com](mailto:saintmarysmusicministry@gmail.com)

#### Baptism Classes at St. Lawrence (español)

Hugo Arrambide  
[harrambide2@msn.com](mailto:harrambide2@msn.com)

#### St. Lawrence Thrift Store Director

Bobbie Wolbach  
(435) 657-0209  
[stlthriftstore@gmail.com](mailto:stlthriftstore@gmail.com)



SCAN TO GIVE  
TO ST. MARY'S

## ONLINE GIVING

*Easily and securely make your donation online with the ability to make automatic payments from a credit or debit card.*

THANK YOU FOR YOUR GENEROSITY!



SCAN TO GIVE  
TO ST. LAWRENCE