

# SAINT MARY'S

CATHOLIC CHURCH • PARK CITY

1505 White Pine Canyon Rd. • Park City, UT 84060 • [StMarysParkCity.com](http://StMarysParkCity.com) • (435) 649-9676



MAY 17, 2026  
THE ASCENSION  
OF THE LORD



JUNE 2-5 SCHEDULE CHANGES  
PENTECOST IN THE PARK  
KNIGHTS OF COLUMBUS BLOOD DRIVE



# ST. LAWRENCE

CATHOLIC MISSION • HEBER CITY

5 South 100 West • Heber City, UT 84032 • [StMarysParkCity.com](http://StMarysParkCity.com) • (435) 654-4035

# WELCOME TO ST. MARY'S PARISH

In 1881, God gave a small group of miners a mission to bring to these mountains the world's greatest treasure: the Body and Blood of Jesus Christ, the Eucharist, and the Faith and Charity that flow from Him.

Today, that mission has spread from the streets of Old Town Park City, to the meadows of White Pine Canyon, to the Heber Valley and beyond. St. Mary's Parish and St. Lawrence Mission seeks to evangelize, catechize, give back in Charity,

and enrich the community through the Catholic Faith and its intellectual, artistic, and cultural traditions. To bring all the treasure of Jesus Christ, for the salvation of souls, and the Greater Glory of God!

*Newcomers and Visitors: Thank you for joining us. We invite you to learn more about St. Mary's Church at our website: [StMarysParkCity.com](http://StMarysParkCity.com).*

## BRINGING THE WORLD'S GREATEST TREASURE TO THE WASATCH BACK + SINCE 1881 +

### MASS TIMES, CONFESSION, ADORATION, & VISITING HOURS



#### ST. MARY OF THE ASSUMPTION

1505 White Pine Canyon Rd, Park City 84060  
(435) 649-9676 - [StMarysParkCity.com](http://StMarysParkCity.com)

Office Hours (Mon-Thur) 8:30 AM - 5:00 PM

Saturday English Mass: 8 AM (1<sup>st</sup> Saturdays), 5:30 PM

Sunday English Mass: 8:00 AM, 10:30 AM

Domingo Misa en Español: 1:00 PM

Daily Mass: Mon - Fri 8:00 AM

Confession: Mon, Thurs, Sat 4:30 - 5:30 PM

Adoration Holy Hour: Mon 4:30 PM | Thu 8:30 AM

*For Sunday Latin Mass and Vespers info, visit the website at [StMarysParkCity.com/Latin](http://StMarysParkCity.com/Latin).*

Visiting Hours: Mon - Fri 7 AM - 8 PM

#### ST. MARY'S OLD TOWN CHAPEL

121 Park Ave, Park City 84060

Visiting Hours: Daily during daylight hours.



#### ST. LAWRENCE MISSION

5 South 100 West, Heber City 84032  
(435) 654-4035 - [StLawrenceMission.org](http://StLawrenceMission.org)

Office Hours (M/W) 9 AM - 5 PM, (Th) 9AM - 1 PM

Saturday English Mass: 5:00 PM

Sunday English Mass: 8:00 AM, 10:00 AM

Domingo Misa en Español: 12:00 PM

Daily Mass: Mondays and Thursdays 9:30 AM

Misa en Español: Miércoles 6:00 PM

Confession: Mondays and Thursdays 10:00 AM

Adoration + Confession: Wed. 5:00 PM - 6:00 PM

Visiting Hours: Mon - Fri 6 AM - 8 PM

#### ST. LAWRENCE THRIFT STORE

84 S 100 W, Heber City, UT 84032  
(435) 657-0209 - [StLawrenceThriftStore.com](http://StLawrenceThriftStore.com)

Wed - Fri 10:00 AM - 6:00 PM, Sat 10:00 AM - 5:00 PM

FOR UPCOMING LITURGIES, VISIT [STMARYSPARKCITY.COM/LITURGY](http://STMARYSPARKCITY.COM/LITURGY)

# SCHEDULE CHANGES

## Priest Retreat June 1-4

### St. Mary's

No Mass or Confession

Tuesday, June 2nd - Thursday, June 4th

### St. Lawrence

No Mass or Confession

Wednesday, June 3rd - Thursday, June 4th

First Friday Nocturnal Adoration - June 5th  
will only be held at St. Mary's from 7-10 PM

---

## CONSECRATION TO THE SACRED HEART

### THURSDAY, JUNE 11TH | AT ST. MARY'S

As part of the upcoming national initiative encouraged by the United States Conference of Catholic Bishops, we will be observing the Consecration to the Sacred Heart of Jesus in our parish.

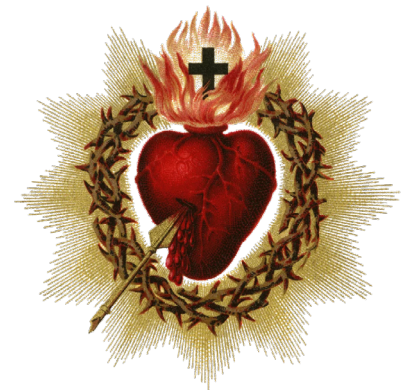
**4:30-6:00 PM**

**Guided Adoration of the Blessed Sacrament**

*(Confession will be available during this time)*

**6:00 PM**

**Mass & Act of Consecration to the Sacred Heart**



Have a group or event that you would like to be included in the bulletin?  
Scan the QR code and fill out the form.

---

#### ABOUT THE COVER:

Title: Jesus Ascending to Heaven | Artist: John Singleton Copley (1738-1815)  
Type: Oil on Canvas | Location: Museum of Fine Arts, Boston

# PENTECOST IN THE PARK

**ST. LAWRENCE MISSION  
SUNDAY, MAY 24 AT 10 AM  
HEBER MAIN STREET PARK**

Celebrate the birthday of the Church with one multilingual, outdoor Mass, followed by a cookout, sponsored by the St. Lawrence Knights of Columbus. Bring blankets and camping chairs for seating.

*Saturday's 5PM Vigil Mass will be held as normal and will follow the extended Pentecost Vigil Liturgy. No 8AM or 12PM Mass on Sunday.*



---

## HELP US REACH OUR FIRST MILLION

TOWARDS BUILDING A NEW ST. LAWRENCE MISSION IN HEBER



With the tremendous growth in the Heber Valley, our Mass attendance and religious education programs regularly pushes the limit of capacity at St. Lawrence - our Mission Church in the Heber Valley.

Thanks to the Lord's provision and your generosity, the St. Lawrence building fund has grown almost 30% since July - from \$731,000 to

\$947,000.

**Can you help us reach the \$1 million mark by the close of our fiscal year - June 30th?**

While we are currently accepting RFPs from architects, we are estimating that we need to raise at total of \$14 million to build a new church to accommodate 600 people for Mass.

The new church will be built on an already owned 6 acre lot at the bustling intersection of Mill Rd. and Old Mill Dr. about 2 miles from the current church.

SCAN TO GIVE TO THE ST.  
LAWRENCE BUILDING FUND



# JOIN OUR PASTORAL CARE MINISTRY

## BRING THE EUCHARIST TO THE SICK AND THE HOMEBOUND

Our Pastoral Care ministry in the Heber Valley is growing as more seniors and homebound parishioners request regular visits. This ministry brings Eucharist, companionship, and a deep sense of connection to those who can no longer join us at Mass. It is a beautiful way to share Christ's presence with members of our community who cherish that weekly touchpoint.

We are seeking a few additional ministers to join our team. This is a shared ministry, with each minister serving one weekend per month. We are also looking for volunteers who can occasionally assist with "oneoff" visits — bringing Eucharist to someone temporarily homebound or hospitalized while recovering from surgery.

If you feel called to offer compassionate presence and help bring the Church to those who need it most, we would love to welcome you.

*Please contact Nancy Tosti: [ntosti@stmarysparkcity.com](mailto:ntosti@stmarysparkcity.com)*

---

## FAITH AND LIFE CATECHESIS & COMMUNITY

EVERY SUNDAY AFTER THE 10:30AM MASS AT ST. MARY'S

NEW TO ST. MARY'S?

WANT TO KNOW MORE ABOUT THE CATHOLIC FAITH?

WANT TO DEEPEN YOUR CONNECTION TO YOUR FAITH AND YOUR COMMUNITY?

St. Mary's is introducing Faith and Life - a new opportunity for everyone at the parish to learn more about the Catholic Faith, from long-time parishioners to those who are just starting to investigate Catholicism. After the 10:30 AM Sunday Mass, grab a coffee and a donut, and join us in the Social Hall to learn more about the Catechism, have your questions about the faith answered, and connect with new parishioners amidst a growing community here at St. Mary's. Learn about all that the parish is doing, upcoming events, and how to get more involved. For more information, contact Director of Evangelization Anthony Jewett at [ajewett@stmarysparkcity.com](mailto:ajewett@stmarysparkcity.com)

**Faith and Life Series (May 10-31): An Introduction to the Catechism of the Catholic Church.**

**Scan the QR code to  
sign up for updates.**





# GIVE HOPE THIS SPRING.

## Give blood.



**American  
Red Cross**

## **Blood Drive** **Knights of Columbus**

**St. Mary's Catholic Church - Gymnasium**  
**1505 White Pine Canyon Road**  
**Park City, UT 84060**

**Friday, May 29, 2026**  
**12:00 p.m. to 6:00 p.m.**

Please visit [RedCrossBlood.org](https://RedCrossBlood.org) and enter: KnightsPC to schedule an appointment.



**Get summer ready! Come to give blood May 18-31 for  
an exclusive Red Cross beach towel, ltd. qty!**



Scan to schedule  
an appointment.

1-800-RED CROSS | 1-800-733-2767 | [RedCrossBlood.org](https://RedCrossBlood.org) | Download the Blood Donor App

© The American National Red Cross | 408001-01-RW

# IN THE PATH OF FRENCH SAINTS

## PILGRIMAGE TO FRANCE | APRIL 12-22, 2027

WITH STOPS IN LISIEUX, NORMANDY, LOURDES  
MONT-SAINT-MICHEL, PARIS, AND TOULOUSE

Join St. Mary's staff member and host of the *Why Catholic?* podcast Justin Hibbard on an epic pilgrimage to France in April 2027. This pilgrimage will take us to the homes, convents, and tombs of some of the most influential saints: St. Thomas Aquinas, St. Dominic, St. Thérèse of Lisieux, St. Bernadette, St. Joan of Arc, St. Vincent de Paul, and more.

In addition to daily talks given by Justin Hibbard on topics related to Catholic apologetics, our own Parochial Vicar Fr. Parsad will be leading us in private daily Masses in some of the most iconic churches, including the Abbey of Mont-Saint-Michel, Sacré-Cœur in Paris, and the Chapel of the Miraculous Medal.

This trip isn't about sight-seeing (though there will be plenty to see); it's about pursuing the heart of Jesus and letting Him transform our lives, as we follow the path of French Saints.

This trip is open to the public. All Catholics and Catholic-curious are welcome. Registration will be capped at about 50 people. All hotel accommodations, breakfasts, and dinners (except one evening) are included. Options are available to purchase group airfare or to travel on your own flight of choice.



**Justin Hibbard**



**Fr. Kenneth Parsad**

FOR MORE INFORMATION & TO REGISTER, SCAN THE QR CODE OR GO TO [WHYCATHOLIC.SUBSTACK.COM/PILGRIMAGE](https://WHYCATHOLIC.SUBSTACK.COM/PILGRIMAGE)



# ENTRANCE HYMN

## LET US GO TO THE ALTAR

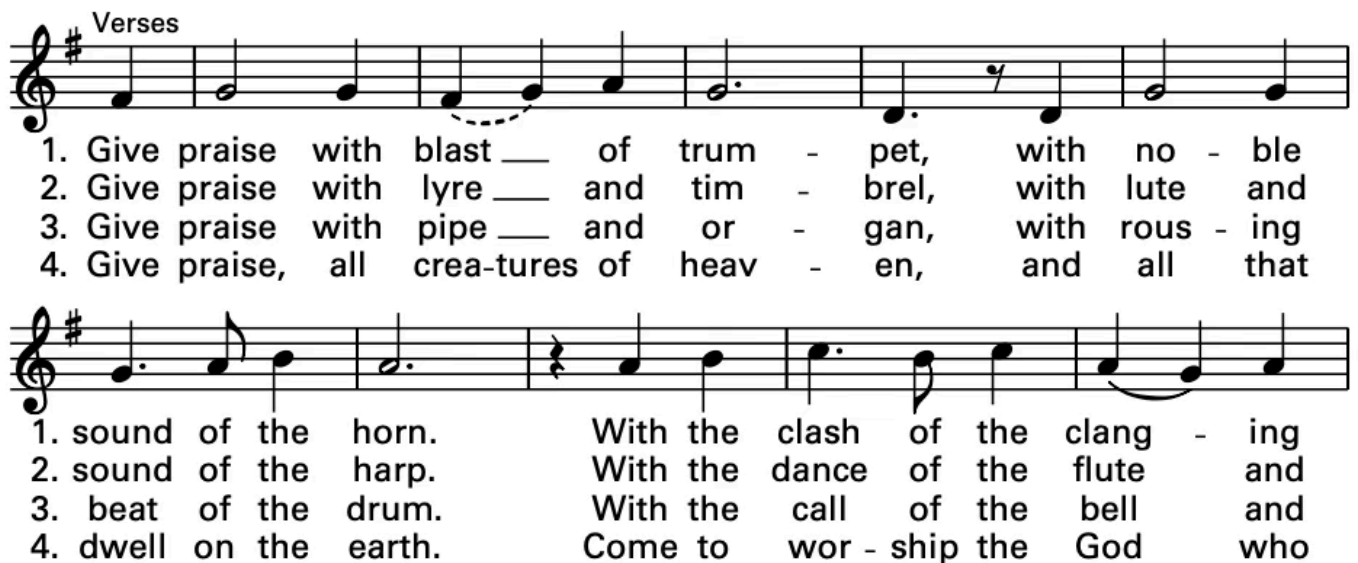
Dan Schutte

Refrain



Let us go to the al - tar of God, the God of our  
glad - ness and joy! Let us en - ter the courts of the  
house of the Lord and sing to the glo - ry of God.

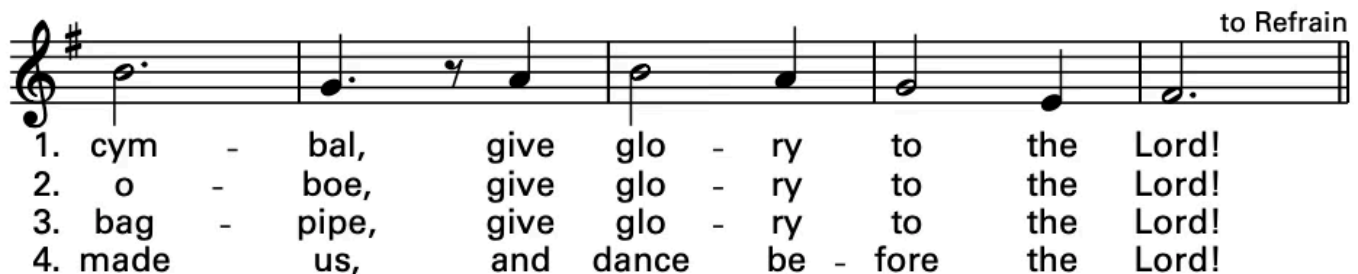
Verses



1. Give praise with blast \_\_\_ of trum - pet, with no - ble  
2. Give praise with lyre \_\_\_ and tim - brel, with lute and  
3. Give praise with pipe \_\_\_ and or - gan, with rous - ing  
4. Give praise, all crea - tures of heav - en, and all that

1. sound of the horn. With the clash of the clang - ing  
2. sound of the harp. With the dance of the flute and  
3. beat of the drum. With the call of the bell and  
4. dwell on the earth. Come to wor - ship the God who

to Refrain



1. cym - bal, give glo - ry to the Lord!  
2. o - boe, give glo - ry to the Lord!  
3. bag - pipe, give glo - ry to the Lord!  
4. made us, and dance be - fore the Lord!

Text: Based on Psalms 42 and 150. Text and music © 1997, Daniel L. Schutte. Published by OCP. All rights reserved.

# GLORIA

Introduction ♩ = 100

Glory to God

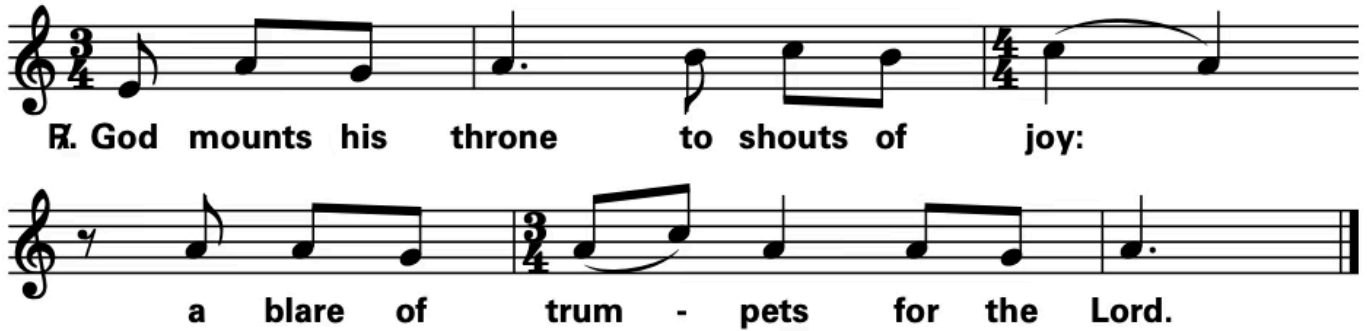
MASS FOR A SERVANT CHURCH  
MICHEL GUIMONT

*PIANO INTRO*

*f* All Glo-ry to God in the high-est, and on earth peace to peo-ple of good will. *mf* We  
praise you, we bless you, we a-dore— you, we glo-ri-fy—  
you, we give you thanks for your great glo-ry,  
Lord God, heav-en-ly King,—— O God, al-might-y Fa-ther.  
*mp* Lord Je-sus Christ, On-ly Be-got-ten Son,——  
Lord God, Lamb of God, Son of the Fa-ther, *mf* you take a-way the  
sins of the world, have mer-cy on us; *f* you take a-way the  
sins of the world, re-ceive our prayer; you are seat-ed at the  
right hand of the Fa-ther, have mer-cy on us. *PIANO*  
*mf* For you a-lone are the Ho-ly One, you a-lone are the Lord,  
you a-lone are the Most—— High, Je-sus Christ,  
with the Ho-ly Spir-it,—— in the glo-ry of God the Fa-ther.  
A-men, a-men, a—— *rit.* men.

# RESPONSORIAL PSALM

## PSALM 47: THE ASCENSION OF THE LORD



**God mounts his throne to shouts of joy:  
a blare of trum - pets for the Lord.**

Text © 1969, 1981, 1997, ICEL. All rights reserved. Used with permission.  
Music: Owen Alstott, © 1977, 1990, OCP. All rights reserved.

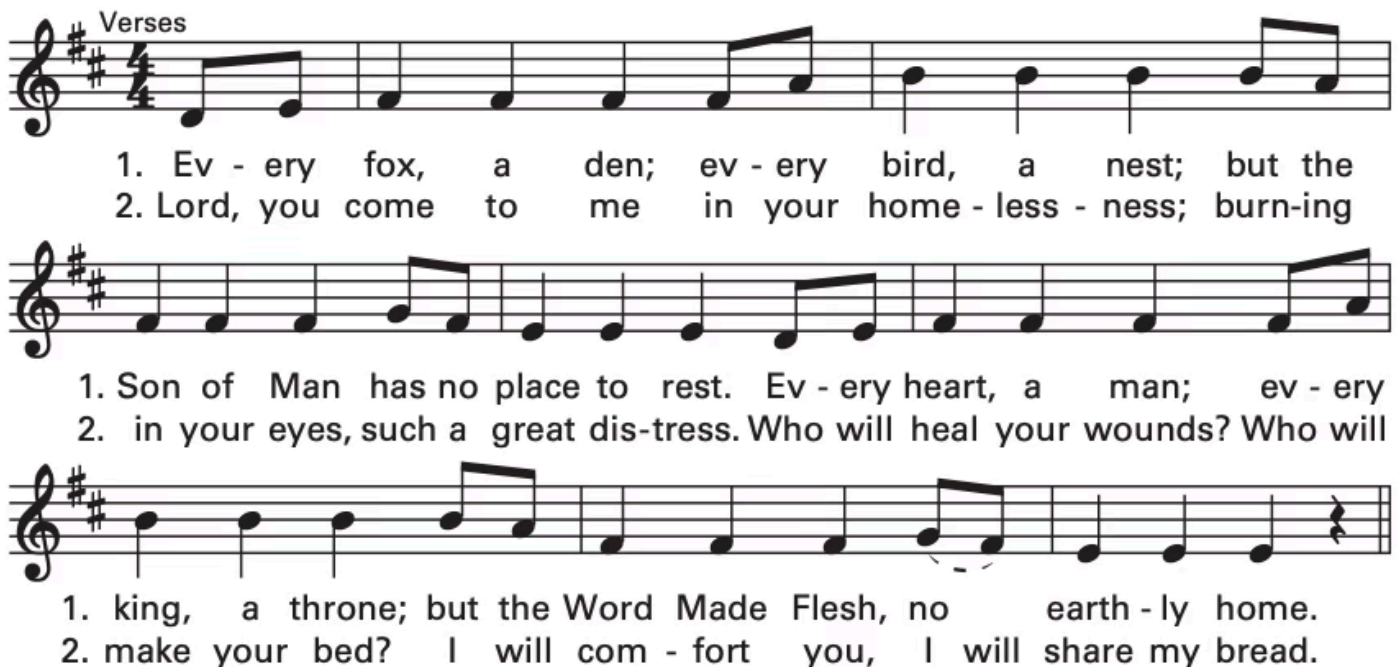
All rights Reserved. Reprinted under One License A-607411

*No collection is taken during Mass. You may give by using the envelopes in the pew in front of you.  
Thank you for your generosity.*

# PREPARATION OF GIFTS

## MAKE YOUR HOME IN ME

Ben Walther



**Verses**

1. Ev - ery fox, a den; ev - ery bird, a nest; but the  
2. Lord, you come to me in your home - less - ness; burn - ing

1. Son of Man has no place to rest. Ev - ery heart, a man; ev - ery  
2. in your eyes, such a great dis - tress. Who will heal your wounds? Who will

1. king, a throne; but the Word Made Flesh, no earth - ly home.  
2. make your bed? I will com - fort you, I will share my bread.

Refrain

Your bur-den's light and your yoke is eas - y. Your name is  
love and your grace is free. My heart was locked but  
you had the key. Make your home in me, make your  
home in me. home in me.

Bridge

Where there is love, there is no fear. So, make  
your home and res - i - dence here. I'm so a - live when you  
are near, so, make your home in me. to Refrain

Text based on Matthew 8:20; 11:30; Luke 9:58. Text and music © 2012, Ben Walther.  
Published by Spirit & Song®, a division of OCP. All rights reserved.

All rights Reserved. Reprinted under One License A-607411

“Go, therefore, and make disciples of all nations, baptizing them in the name of the Father, and of the Son, and of the Holy Spirit, teaching them to observe all that I have commanded you.”

# SANCTUS

## Holy, Holy, Holy

♩ = 100

MASS FOR A SERVANT CHURCH  
MICHEL GUIMONT

*PIANO*  
*INTRO*

*mf* Ho - ly, Ho - ly, Ho - ly Lord God of Hosts.

*cresc.* Heav'n and earth are full of your glo - ry. *f* Ho -

san - na in the high - est. *mf* Bless - ed is he who

comes in the name of the Lord. *f* Ho - san - na in the high - est. *rit.*

All rights Reserved. Reprinted under One License A-607411

# AGNUS DEI

## LAMB OF GOD

*mp* Lamb of God, you take a-way the sins of the world, have

mer - cy on us. Lamb of God, you take a - way the

sins of the world, have mer - cy on us. Lamb of

God, you take a-way the sins of the world, *rit.* grant us peace.

All rights Reserved. Reprinted under One License A-607411

# COMMUNION HYMN

## I, THE LORD

Tom Kendzia

Refrain

I, the Lord, am with you, al - ways by your side.

Come and take my hand, for I will lead you home. Fol-low

me, fol-low me. 1, 2 2 to Verses

Final

Fol-low me, fol-low me.

Verse 1

1. I am the res - ur - rec - tion, and I am the life; if

1. you be-lieve in me, you shall live for - ev - er. to Refrain

Verse 2

2. You shall have new life and live it to the full.

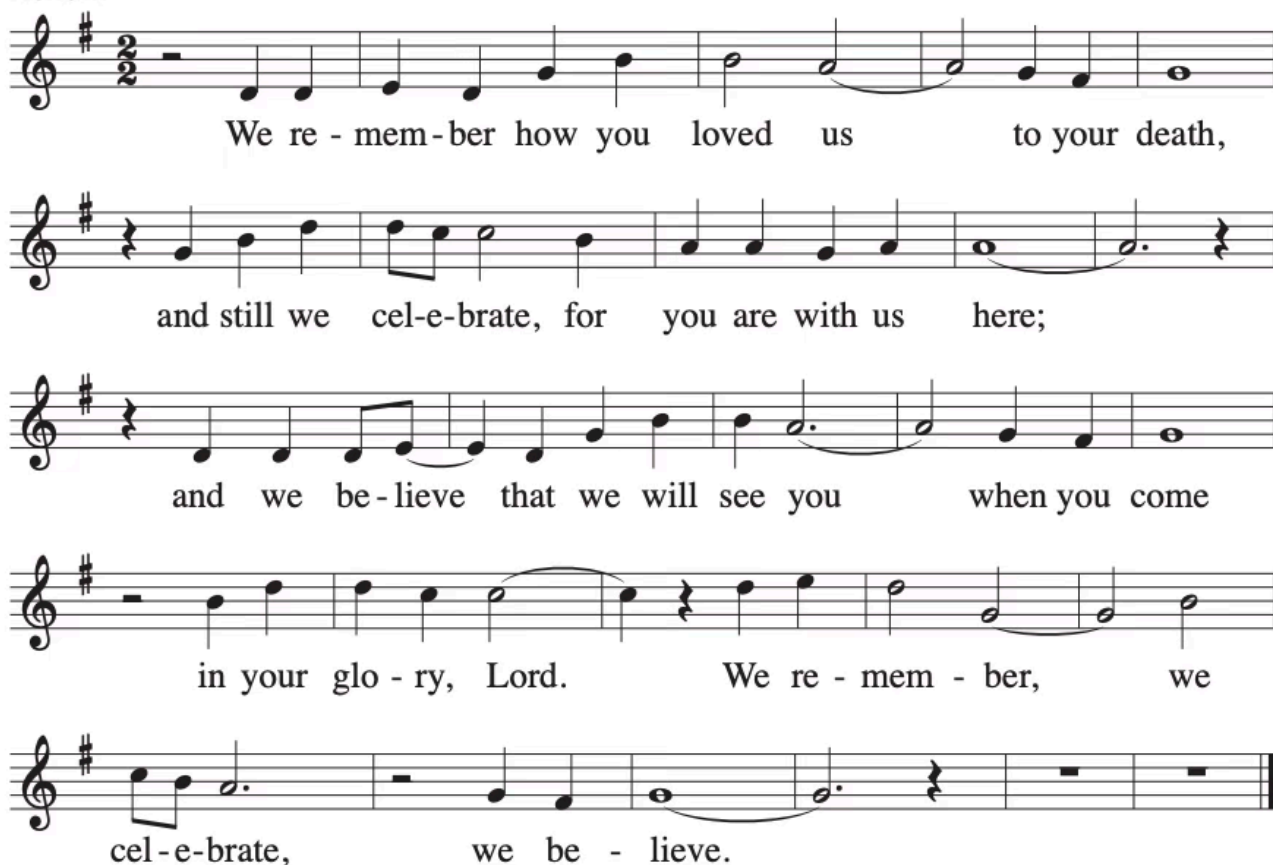
2. Turn your sor-row in - to joy, for life has just be - gun. to Refrain

Text: Based on John 6:35-58; Tom Kendzia, © 1983, OCP. All rights reserved.

# HYMN OF PRAISE

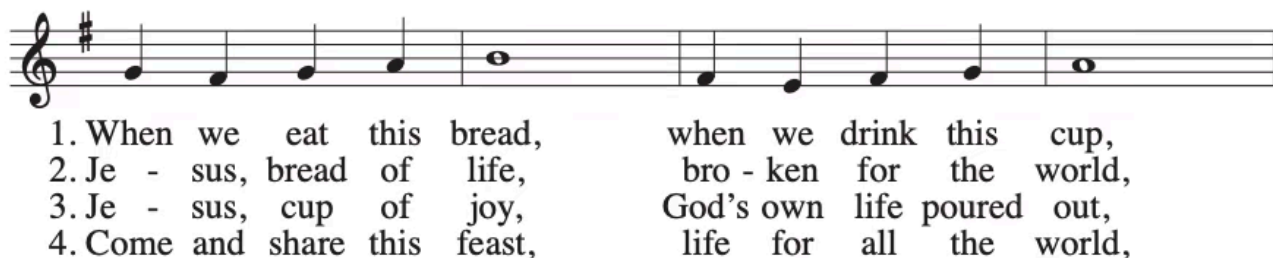
## WE REMEMBER

### Refrain

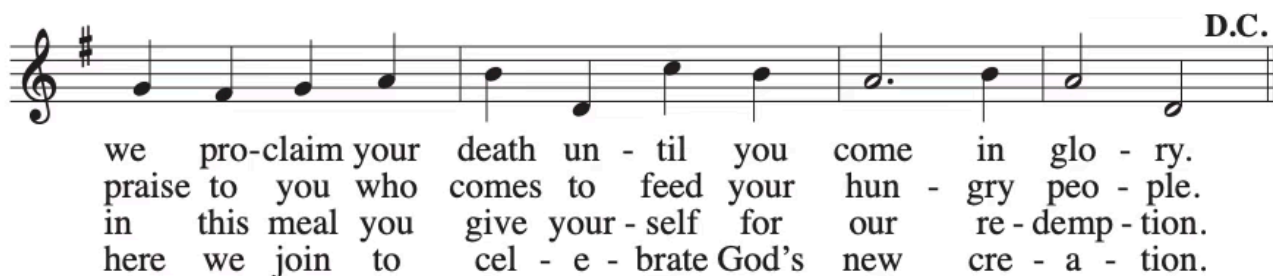


We re - mem - ber how you loved us to your death,  
and still we cel - e - brate, for you are with us here;  
and we be - lieve that we will see you when you come  
in your glo - ry, Lord. We re - mem - ber, we  
cel - e - brate, we be - lieve.

### Verses—Set A



1. When we eat this bread, when we drink this cup,  
2. Je - sus, bread of life, bro - ken for the world,  
3. Je - sus, cup of joy, God's own life poured out,  
4. Come and share this feast, life for all the world,



**D.C.**  
we pro - claim your death un - til you come in glo - ry.  
praise to you who comes to feed your hun - gry peo - ple.  
in this meal you give your - self for our re - demp - tion.  
here we join to cel - e - brate God's new cre - a - tion.

# RECESSIONAL

## THE KING OF KINGS, CHRIST JESUS REIGNS

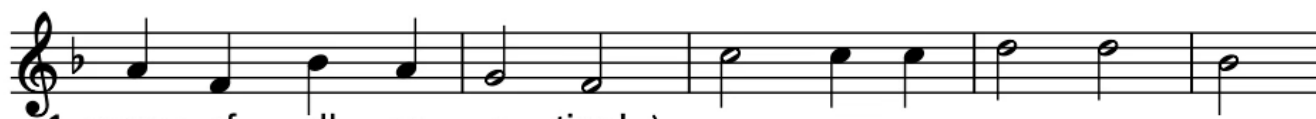
ICH GLAUB AN GOTT



1. The King of Kings, Christ Je - sus reigns The Lord of  
 2. E - ter - nal King, Christ is God's Word From end - less  
 3. O ris - en King, you light the way To heav - en's



1. ev - 'ry na - tion; In lov - ing wis - dom he or - dains The  
 2. ag - es spo - ken; En - fleshed on earth, his voice was heard And  
 3. glo - rious por - tal; If in our hearts your truth has sway, We



1. course of all cre - a - tion! }  
 2. Sa - tan's might was bro - ken! } Christ, we a - dore you! Christ,  
 3. too have life im - mor - tal! }



1-3. we im - plore you: Christ, keep us ev - er be - fore you!

Text: 87 87 55 8; Melvin Farrell, SS, 1930–1986, © 1977, OCP Publications. All rights reserved.  
 Music: *Mainz Gesangbuch*, 1870.

All rights Reserved. Reprinted under One License A-607411

### PRAYER OF THANKSGIVING AFTER MASS

Dear sweet Jesus, I kneel before you and give you thanks for the great treasure of the Most Blessed Sacrament. May it nourish me with a lively faith and with true repentance. May your cross be my strength, your resurrection be my life, and your grace be my sure confidence. With the Father and the Holy Spirit, your love is the full satisfaction of my desire, my refreshment, and my own love. May you be glorified in all things everywhere and may your peace be the joy of all people.

AMEN.

## RECEIVE CUSTOMIZED TEXT & EMAIL UPDATES

Find out about all our groups, weekly series, & ministries and choose what info you'd like to receive from them.

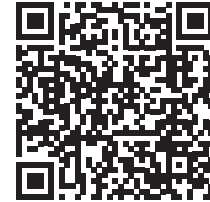
## SIGN-UP OPTION 1

TEXT **MARYPC** to **84576** from your phone

## SIGN-UP OPTION 2

VISIT [StMarysParkCity.com/DIGITAL-CONTENT](http://StMarysParkCity.com/DIGITAL-CONTENT)

## LISTEN TO THIS WEEKEND'S HOMILY FROM FR. DASS



### STAFF LEADERSHIP

#### Pastor

Fr. Arokia Dass David  
[frdass@stmarysparkcity.com](mailto:frdass@stmarysparkcity.com)

#### Parochial Vicar

Fr. Kenneth Rey Parsad  
[frparsad@stmarysparkcity.com](mailto:frparsad@stmarysparkcity.com)

#### OCIA & Baptism

Deacon Tom Tosti  
(435) 783-5831 - [ttosti@stmarysparkcity.com](mailto:ttosti@stmarysparkcity.com)

#### St. Mary's Parish Administrator

Sandy Foley  
(435) 940-5455 - [sfoley@stmarysparkcity.com](mailto:sfoley@stmarysparkcity.com)

#### St. Lawrence Administrator & Parish Communications

Justin Hibbard  
(410) 353-1022 - [jhibbard@stmarysparkcity.com](mailto:jhibbard@stmarysparkcity.com)

#### Director of Charity

Maria Villar  
(801) 652-5039 - [mvillar@stmarysparkcity.com](mailto:mvillar@stmarysparkcity.com)

#### St. Mary's Dir. of Rel. Ed. & Safe Environment

Lauri Hawkins  
(435) 940-5453 - [lhawkins@stmarysparkcity.com](mailto:lhawkins@stmarysparkcity.com)

#### St. Lawrence Dir. of Rel. Ed. & Save Environment

Andreina Payan  
[andreina@saintlawrenceheber.com](mailto:andreina@saintlawrenceheber.com)

#### Dir. of Evangelization

Anthony Jewett  
(435) 237-5531 - [ajewett@stmarysparkcity.com](mailto:ajewett@stmarysparkcity.com)

#### Marriage Prep

Nancy Tosti  
[ntosti@stmarysparkcity.com](mailto:ntosti@stmarysparkcity.com)

#### Receptionist and Dir. of Hispanic Ministry

Gracie Cortes  
(435) 649-9676 - [gcortes@stmarysparkcity.com](mailto:gcortes@stmarysparkcity.com)

#### Director of St. Mary's Music Ministry

Joe Demers  
[saintmarysmusicministry@gmail.com](mailto:saintmarysmusicministry@gmail.com)

#### Baptism Classes at St. Lawrence (español)

Hugo Arrambide  
[harrambide2@msn.com](mailto:harrambide2@msn.com)

#### St. Lawrence Thrift Store Director

Bobbie Wolbach  
(435) 657-0209  
[stlthriftstore@gmail.com](mailto:stlthriftstore@gmail.com)



SCAN TO GIVE  
TO ST. MARY'S

## ONLINE GIVING

*Easily and securely make your donation online with the ability to make automatic payments from a credit or debit card.*

THANK YOU FOR YOUR GENEROSITY!



SCAN TO GIVE  
TO ST. LAWRENCE