

# SAINT MARY'S CATHOLIC CHURCH • PARK CITY

1505 White Pine Canyon Rd. • Park City, UT 84060 • StMarysParkCity.com • (435) 649-9676



APRIL 19, 2026  
THE THIRD SUNDAY  
OF EASTER

ANNUAL ST. MARY'S SUMMIT  
PHOTOS FROM THE EASTER VIGIL  
RELIGIOUS ED SACRAMENT MASSES



# ST. LAWRENCE

CATHOLIC MISSION • HEBER CITY

5 South 100 West • Heber City, UT 84032 • StMarysParkCity.com • (435) 654-4035

# WELCOME TO ST. MARY'S PARISH

In 1881, God gave a small group of miners a mission to bring to these mountains the world's greatest treasure: the Body and Blood of Jesus Christ, the Eucharist, and the Faith and Charity that flow from Him.

Today, that mission has spread from the streets of Old Town Park City, to the meadows of White Pine Canyon, to the Heber Valley and beyond. St. Mary's Parish and St. Lawrence Mission seeks to evangelize, catechize, give back in Charity,

and enrich the community through the Catholic Faith and its intellectual, artistic, and cultural traditions. To bring all the treasure of Jesus Christ, for the salvation of souls, and the Greater Glory of God!

*Newcomers and Visitors: Thank you for joining us. We invite you to learn more about St. Mary's Church at our website: [StMarysParkCity.com](http://StMarysParkCity.com).*

## BRINGING THE WORLD'S GREATEST TREASURE TO THE WASATCH BACK + SINCE 1881 +

### MASS TIMES, CONFESSION, ADORATION, & VISITING HOURS



#### ST. MARY OF THE ASSUMPTION

1505 White Pine Canyon Rd, Park City 84060  
(435) 649-9676 - [StMarysParkCity.com](http://StMarysParkCity.com)

Office Hours (Mon-Thur) 8:30 AM - 5:00 PM

Saturday English Mass: 8 AM (1<sup>st</sup> Saturdays), 5:30 PM

Sunday English Mass: 8:00 AM, 10:30 AM

Domingo Misa en Español: 1:00 PM

Daily Mass: Mon - Fri 8:00 AM

Confession: Mon, Thurs, Sat 4:30 - 5:30 PM

Adoration Holy Hour: Mon 4:30 PM | Thu 8:30 AM

*For Sunday Latin Mass and Vespers info, visit the website at [StMarysParkCity.com/Latin](http://StMarysParkCity.com/Latin).*

Visiting Hours: Mon - Fri 7 AM - 8 PM

#### ST. MARY'S OLD TOWN CHAPEL

121 Park Ave, Park City 84060

Visiting Hours: Daily during daylight hours.



#### ST. LAWRENCE MISSION

5 South 100 West, Heber City 84032  
(435) 654-4035 - [StLawrenceMission.org](http://StLawrenceMission.org)

Office Hours (M/W) 9 AM - 5 PM, (Th) 9AM - 1 PM

Saturday English Mass: 5:00 PM

Sunday English Mass: 8:00 AM, 10:00 AM

Domingo Misa en Español: 12:00 PM

Daily Mass: Mondays and Thursdays 9:30 AM

Misa en Español: Miércoles 6:00 PM

Confession: Mondays and Thursdays 10:00 AM

Adoration + Confession: Wed. 5:00 PM - 6:00 PM

Visiting Hours: Mon - Fri 6 AM - 8 PM

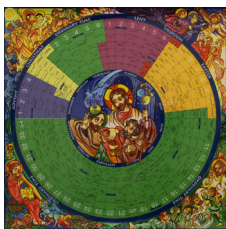
#### ST. LAWRENCE THRIFT STORE

84 S 100 W, Heber City, UT 84032  
(435) 657-0209 - [StLawrenceThriftStore.com](http://StLawrenceThriftStore.com)

Wed - Fri 10:00 AM - 6:00 PM, Sat 10:00 AM - 5:00 PM

FOR UPCOMING LITURGIES, VISTI [STMARYSPARKCITY.COM/LITURGY](http://STMARYSPARKCITY.COM/LITURGY)

# THIS WEEK AT A GLANCE



## LITURGICAL CALENDAR

4/21 - ST. ANSELM (BISHOP & DOCTOR OF THE CHURCH)

4/23 - ST. GEORGE (MARTYR); ST. ADALBERT (BISHOP & MARTYR)

4/24 - ST. FIDELIS OF SIGMARINGEN (PRIEST & MARTYR)



## ADORATION

ST. MARY'S - MONDAYS AT 4:30PM, THURSDAYS AT 8:30AM

ST. LAWRENCE - WEDNESDAYS AT 5PM



## ABBA WOMEN'S PRAYER GROUP

MONDAYS AT 6:30 PM

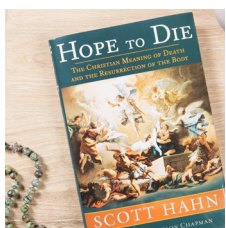
ST. LAWRENCE - ST. JOSEPH'S ROOM



## WOMEN'S BIBLE STUDY

TUESDAYS AT 5 PM

ST. MARY'S PARISH CENTER ROOM 103



## MEN'S GROUP FOR FAITH & REFLECTION

THURSDAYS AT 10:15 AM

WASATCH COUNTY LIBRARY



## JOIN A COMMUNITY GROUP

ST. MARY'S & ST. LAWRENCE OFFERS MANY COMMUNITY GROUPS. FIND YOURS AT [STMARYSPARKCITY.COM/GROUPS](http://STMARYSPARKCITY.COM/GROUPS)



Have a group or event that you would like to be included in the bulletin?  
Scan the QR code and fill out the form.

### ABOUT THE COVER:

Title: Gang nach Emmaus (Walk to Emmaus) | Artist: Robert Zünd (1827-1909)  
Type: Oil Painting | Location: St. Gallen Museum of Art

# SUMMIT AT ST. MARY'S

WITH DR. SCOTT POWELL | SATURDAY, MAY 2ND AT 6:30PM

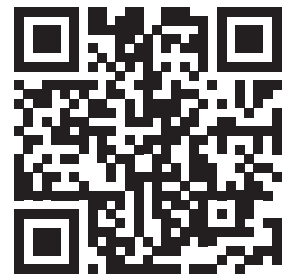


## A TALE OF TWO KINGDOMS

*How Jesus Invites Us into His Own Priesthood*

Join us for our new date for the St. Mary's Summit with renowned Catholic speaker Scott Powell, a teacher, theologian, and author. He is a Professor of Theology at St. John Vianney Theological Seminary and co-founder of Camp Wojtyła, a Catholic outdoor adventure program in the Colorado Rockies. He holds a doctorate in Catholic Studies from Liverpool Hope University and has spoken internationally on theology, Scripture, and Catholic culture. Scott has appeared on EWTN, Catholic Answers Live, and several other outlets, and hosts the podcast "Sunday School" with The Pillar.

SCAN THE QR CODE  
TO RSVP



# RELIGIOUS ED

## CONFIRMATION & FIRST COMMUNION

**ST. MARY'S**  
**Confirmation**  
May 1st at 7PM

**First Communion**  
May 2nd at 10 AM

**ST. LAWRENCE**  
**Confirmation**  
April 28th at 7PM

**First Communion**  
May 9th at 10 AM

*All Masses will be held at St. Mary's Park City WPC Campus*

# PHOTOS FROM THE EASTER VIGIL

*Photography compliments of James Rose*

**"O TRULY BLESSED NIGHT**



**WHEN THINGS OF HEAVEN**



**ARE WED TO THOSE OF EARTH**



**AND DIVINE TO THE HUMAN."**

# MAJOR EASTER GIVING OPPORTUNITIES

*Looking to make a major gift this Easter season? Please consider the following opportunities!*

---

## HELP REPLACE THE ST. MARY'S ROOF



The original roof of St. Mary's Church will need to be replaced this summer.

**\$850,000 has already been pledged for this \$1 million project. Your generous Easter gift to help raise the final \$150,000 needed will ensure this beautiful church, this sanctuary of Park City, can continue to welcome all to worship, to gather, and to receive the Body of Christ! Thank you!**

---

## SUPPORT THE DDD

The Diocesan Development Drive (DDD) is the best way you can support the greater Catholic Church in Utah! Your gifts help form the future priests of Utah, like our own seminarian Michael Weight and our own recently ordained Fr. Kenneth Parsad. Your support helps feed struggling families and children through Catholic Community Services of Utah. And your generosity provides for the less fortunate Catholic communities!

**The Diocese of Salt Lake City has set St. Mary's 2026 DDD Quota at \$348,000 and St. Lawrence's DDD Quota at \$34,000. Our parish is required to pay the difference between what is given and the actual quota. Your generous gift will help raise what's still needed.**



**Thank you!**



**SCAN THE QR CODE TO GIVE DIRECTLY TO THE DDD. PLEASE SELECT SAINT MARY OF THE ASSUMPTION (2089) OR SAINT LAWRENCE MISSION (22026) TO ENSURE WE RECEIVE CREDIT FOR YOUR GIFT.**

# HELP US BRING THE BODY & BLOOD OF JESUS CHRIST TO THE WASATCH BACK

---

## HELP BUILD A NEW ST. LAWRENCE MISSION



As the Heber Valley continues to grow, it is clear that the St. Lawrence community has outgrown our beautiful, historic church.

Bishop Solis has given us approval to move forward with the next steps of the building project. The new church will be built on an already owned 6 acre lot at the bustling intersection of Mill Rd. and Old Mill Dr. about 2 miles from the current church. Bishop Solis' vision is for St. Lawrence to continue to be a mission church of St. Mary's and that the new church will accommodate 600 people for Mass in addition to ample classroom and gathering space. In order to break ground, we will need to raise a total of \$14 million. We currently have a little over \$900,000 in our building fund (an increase of over 20% since July 1, 2025).

On Easter Sunday, 250 people packed St. Lawrence (which seats about 130 people). The downstairs classroom, which we use for overflow space was so full that we had to set up chairs in the hallway. Our weekend masses are getting fuller each week, regularly requiring the use of overflow space.

St. Lawrence's religious ed program is also filled to capacity with over 250 registered students (about the same number as St. Mary's).

SCAN TO GIVE TO THE ST.  
LAWRENCE BUILDING FUND

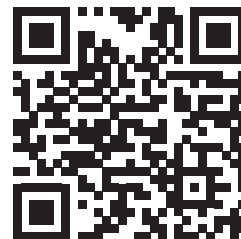


---

## MAKE YOUR EASTER GIFT ONLINE



ST. MARY'S - PARK CITY



ST. LAWRENCE - HEBER CITY

**StMarysParkCity.com/GIVE**

**or text STMARY GIVE to (833) 858-3376**

# COR

## CATHOLIC MEN'S GROUP

A flexible framework of prayer, formation and fraternity that helps focus men on Jesus through building Christ-centered brotherhood, sponsored by St. Mary's Knights of Columbus.

### PRAYER

Through prayer, we encounter Christ and deepen our faith and relationship with him.

### FORMATION

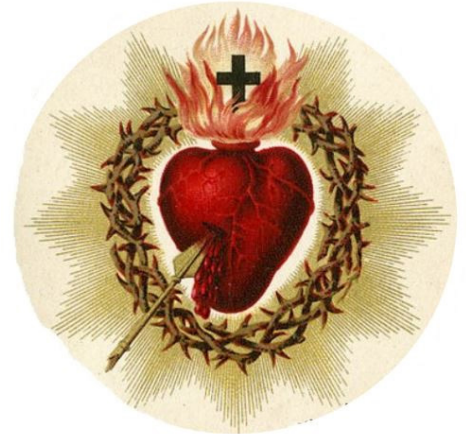
As disciples of Christ, the goal of Catholic formation is to become like Christ.

### FRATERNITY

Fraternity is not just friendship or hanging out, it is a true brotherhood centered on Christ.

*Dates & Times TBA. Contact Ed Peteroy (epeteroy@hotmail.com) for more information*

### A CALL TO ALL MEN



COR

---

# OPENING YOUR HEART

## WOMEN'S BIBLE STUDY

**Make authentic connections with other women.  
Refuel and refresh. Learn more about God.**

This 22-week study explores the fundamental questions for our Catholic faith and our relationship with Jesus Christ. Join us as we examine the core questions that we need to wrestle with if we want to experience all that God has for us.

Tuesdays at 5:00 PM  
St. Mary's Parish Center Room 103

Questions? Beth Hartung  
913-208-3321 or Beth.Hartung@yahoo.com



# ENTRANCE HYMN

## THE CHURCH'S ONE FOUNDATION

AURELIA



1. The Chur-ch's one foun - da - tion Is Je - sus Christ her Lord;
2. E - lect from ev - 'ry na - tion, Yet one o'er all the earth,
3. 'Mid toil and trib - u - la - tion, And tu - mult of her war,
4. Yet she on earth hath un - ion With God, the Three - in - One,



1. She is his new cre - a - tion By wa - ter and the word:
2. Her char - ter of sal - va - tion, "One Lord, one faith, one birth!"
3. She waits the con - sum - ma - tion Of peace for - ev - er - more,
4. And with the saints, com - mun - ion With those whose rest is won.



1. From heav'n he came and sought her To be his ho - ly bride;
2. One ho - ly Name she bless - es, Par - takes one ho - ly food,
3. Till with the vi - sion glo - rious Her long - ing eyes are blest,
4. O hap - py ones and ho - ly! Lord, give us grace that we



1. With his own blood he bought her, And for her life he died.
2. And to one hope she press - es With ev - 'ry grace en - dued.
3. And the great Church vic - to - rious Shall be the Church at rest.
4. Like them, the meek and low - ly, On high may dwell with thee.

Text: 76 76 D; Samuel J. Stone, 1839–1900. Music: Samuel S. Wesley, 1810–1876.

All rights Reserved. Reprinted under One License A-607411

# GLORIA

Introduction ♩ = 100

Glory to God

MASS FOR A SERVANT CHURCH  
MICHEL GUIMONT

PIANO INTRO



*f* All Glo - ry to God in the high - est, and on earth peace to peo - ple of good will. *mf* We

praise you, we bless you, we a - dore — you, we glo - ri - fy —  
you, we give you thanks for your great glo - ry,  
Lord God, heav - en - ly King, — O God, al - might - y Fa - ther.  
*mp* Lord Je - sus Christ, On - ly Be - got - ten Son, —  
Lord God, Lamb of God, Son of the Fa - ther, *mf* you take a - way the  
sins of the world, have mer - cy on us; *f* you take a - way the  
sins of the world, re - ceive our prayer; you are seat - ed at the  
right hand of the Fa - ther, have mer - cy on us. *piano*  
*mf* For you a - lone are the Ho - ly One, you a - lone are the Lord,  
you a - lone are the Most — High, Je - sus Christ,  
with the Ho - ly Spir - it, — in the glo - ry of God the Fa - ther.  
A - men, a - men, a — *rit.* men.

All rights Reserved. Reprinted under One License A-607411

## RESPONSORIAL PSALM

### PSALM 16: THIRD SUNDAY OF EASTER, YEAR A

**R. Lord, you will show us the path of life.**

Text © 1969, 1981, 1997, ICEL. All rights reserved. Used with permission.

Music: Owen Alstott, © 1977, 1990, OCP. All rights reserved.

All rights Reserved. Reprinted under One License A-607411

No collection is taken during Mass. You may give by using the envelopes in the pew in front of you.  
Thank you for your generosity.

## PREPARATION OF GIFTS TWO WERE BOUND FOR EMMAUS

Bob Hurd



1, 5. Two were bound for Em - ma - us, dis - heart - ened  
2. On the Sea of Ti - ber - ius, when the night was  
3. Then they knew it was Je - sus and they has - tened  
4. When the road makes us wea - ry, when our la - bor



1, 5. and \_\_\_ lost; all their hope for the fu - ture had been  
2. near - ly gone and their toil seemed so use - less, not one  
3. in to shore; bread and fish for their break - fast from the  
4. seems but loss, when the fire of faith weak - ens and too



1, 5. nailed to a cross. Love un-known then walked be-side \_\_\_ them,  
2. fish had they caught, from the shore the strang-er called to them:  
3. hands of their Lord. "O \_\_\_ Pe - ter, if you love \_\_\_ me  
4. high seems the cost, let the Church turn to its ris - en Lord,



1, 5. come \_\_\_ back from the dead, and they knew he was  
2. "Cast your net, friends, once more." And they filled it to  
3. you must care for my sheep; if you fol - low your  
4. who for us bore the cross, and we'll find our hearts



1, 5. ris - en in the break - ing of bread.  
2. burst - ing, but the net was not torn.  
3. Shep - herd, then a shep - herd you'll be."  
4. burn - ing at the sound of his voice.

Text: 11 13 13 13; based on Luke 24:13-35; John 21:1-19. Music: KENMARE. Text and music © 2000, Bob Hurd.  
Published by OCP Publications. All rights reserved.

# SANCTUS

## Holy, Holy, Holy

♩ = 100

MASS FOR A SERVANT CHURCH  
MICHEL GUIMONT

*PIANO INTRO*

*mf* Ho - ly, Ho - ly, Ho - ly Lord God of Hosts.

*cresc.* Heav'n and earth are full of your glo - ry. *f* Ho -

san - na in the high - est. *mf* Bless - ed is he who

comes in the name of the Lord. *cresc.* *f* Ho - san - na in the high - est. *rit.*

All rights Reserved. Reprinted under One License A-607411

# AGNUS DEI

## LAMB OF GOD

*mp* Lamb of God, you take a-way the sins of the world, have

mer - cy on us. Lamb of God, you take a - way the

sins of the world, have mer - cy on us. Lamb of

God, you take a-way the sins of the world, *rit.* grant us peace.

All rights Reserved. Reprinted under One License A-607411

# COMMUNION HYMN

## IN THE BREAKING OF THE BREAD

Bob Hurd



Refrain In the break - ing of the

Verses 1. Bread for the jour - ney, strength for our  
2. Bread of the prom - ise, peo - ple of



bread we have known him;  
1. years, man - na of ag - es, of  
2. hope, wine of com - pas - sion,



we have been fed. Je - sus the  
1. strug - gle and tears. Cup of sal -  
2. life for the world. Gath - ered at



strang - er, Je - sus the Lord,  
1. va - tion, fruit of the land,  
2. ta - ble, joined as his bod - y,



be our com - pan ion;  
1. bless and re - ceive now,  
2. sealed in the Spir - it,



be our hope. (to Verses)  
1. the work of our hands. (to Refrain)  
2. sent by the Word. (to Refrain)

Text: Based on Luke 24:18-35; Acts 2:42. Text © 1984, 1987, Bob Hurd and Michael Downey.  
Music © 1984, Bob Hurd. Published by OCP. All rights reserved.

# HYMN OF PRAISE

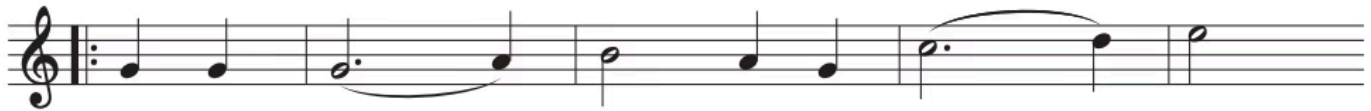
## GIVE ME JESUS



1. I heard my moth-er say, I heard my moth-er  
2. Dark mid-night was my cry, Dark mid-night was my  
3. Oh, when I come to die, Oh, when I come to



say, I heard my moth-er say, Give me Je - sus.  
cry, Dark mid-night was my cry, Give me Je - sus.  
die, Oh, when I come to die, Give me Je - sus.



Give me Je - sus. Give me Je - sus,



You may have all this world, Give me Je - sus.

Text: African American spiritual

Tune: GIVE ME JESUS, 666 4 with refrain; African American spiritual

All rights Reserved. Reprinted under One License A-607411

### PRAYER OF THANKSGIVING AFTER COMMUNION

Dear sweet Jesus, I kneel before you and give you thanks for the great treasure of the Most Blessed Sacrament. May it nourish me with a lively faith and with true repentance. May your cross be my strength, your resurrection be my life, and your grace be my sure confidence. With the Father and the Holy Spirit, your love is the full satisfaction of my desire, my refreshment, and my own love. May you be glorified in all things everywhere and may your peace be the joy of all people.

AMEN.

# RECESSIONAL

## ALLELUIA! ALLELUIA!

1. Al - le - lu - ia! Al - le - lu - ia! Hearts to heav'n and  
 2. Now the i - ron bars are bro - ken, Christ from death to  
 3. Al - le - lu - ia! Al - le - lu - ia! Glo - ry be to

1. voic - es raise; Sing to God a hymn of glad - ness,  
 2. life is born, Glo - rious life, and life im - mor - tal,  
 3. God on high; Al - le - lu - ia to the Sav - ior,

1. Sing to God a hymn of praise. He who on the  
 2. On this res - ur - rec - tion morn; Christ has tri - umphed,  
 3. Who has won the vic - to - ry; Al - le - lu - ia

1. cross as Sav - ior For the world's sal - va - tion bled, Je - sus  
 2. and we con - quer By his might - y en - ter - prise, We with  
 3. to the Spir - it, Font of love and sanc - ti - ty; Al - le -

1. Christ, the King of Glo - ry, Now is ris - en from the dead.  
 2. him to life e - ter - nal By his res - ur - rec - tion rise.  
 3. lu - ia! Al - le - lu - ia! To the Tri - une Maj - es - ty.

Text: 87 87 D; Christopher Wordsworth, 1872, alt.  
 Music: Ludwig van Beethoven, 1770-1827; adapt. by Edward Hodges, 1796-1867.

All rights Reserved. Reprinted under One License A-607411

## DID YOU KNOW?

The structure of the Mass mirrors today's Gospel reading. On the road to Emmaus, Jesus first revealed himself to the two disciples through Scripture and then through the breaking of the bread. Likewise, the Mass has two main parts: the Liturgy of the Word and the Liturgy of the Eucharist. In the Liturgy of the Word, Jesus reveals Himself to us through Sacred Scripture, and in the Liturgy of the Eucharist, Jesus reveals Himself to us through Holy Communion.

## RECEIVE CUSTOMIZED TEXT & EMAIL UPDATES

Find out about all our groups, weekly series, & ministries and choose what info you'd like to receive from them.

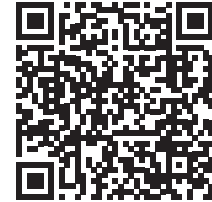
## SIGN-UP OPTION 1

TEXT **MARYPC** to **84576** from your phone

## SIGN-UP OPTION 2

VISIT [StMarysParkCity.com/DIGITAL-CONTENT](http://StMarysParkCity.com/DIGITAL-CONTENT)

## LISTEN TO THIS WEEKEND'S HOMILY FROM FR. DASS



### STAFF LEADERSHIP

#### Pastor

Fr. Arokia Dass David  
[frdass@stmarysparkcity.com](mailto:frdass@stmarysparkcity.com)

#### Parochial Vicar

Fr. Kenneth Rey Parsad  
[frparsad@stmarysparkcity.com](mailto:frparsad@stmarysparkcity.com)

#### OCIA & Baptism

Deacon Tom Tosti  
(435) 783-5831 - [ttosti@stmarysparkcity.com](mailto:ttosti@stmarysparkcity.com)

#### St. Mary's Parish Administrator

Sandy Foley  
(435) 940-5455 - [sfoley@stmarysparkcity.com](mailto:sfoley@stmarysparkcity.com)

#### St. Lawrence Administrator & Parish Communications

Justin Hibbard  
(410) 353-1022 - [jhibbard@stmarysparkcity.com](mailto:jhibbard@stmarysparkcity.com)

#### Director of Charity

Maria Villar  
(801) 652-5039 - [mvillar@stmarysparkcity.com](mailto:mvillar@stmarysparkcity.com)

#### St. Mary's Dir. of Rel. Ed. & Safe Environment

Lauri Hawkins  
(435) 940-5453 - [lhawkins@stmarysparkcity.com](mailto:lhawkins@stmarysparkcity.com)

#### St. Lawrence Dir. of Rel. Ed. & Save Environment

Andreina Payan  
[andreina@saintlawrenceheber.com](mailto:andreina@saintlawrenceheber.com)

#### Dir. of Evangelization

Anthony Jewett  
(435) 237-5531 - [ajewett@stmarysparkcity.com](mailto:ajewett@stmarysparkcity.com)

#### Marriage Prep

Nancy Tosti  
[ntosti@stmarysparkcity.com](mailto:ntosti@stmarysparkcity.com)

#### Receptionist and Dir. of Hispanic Ministry

Gracie Cortes  
(435) 649-9676 - [gcortes@stmarysparkcity.com](mailto:gcortes@stmarysparkcity.com)

#### Director of St. Mary's Music Ministry

Joe Demers  
[saintmarysmusicministry@gmail.com](mailto:saintmarysmusicministry@gmail.com)

#### Baptism Classes at St. Lawrence (español)

Hugo Arrambide  
[harrambide2@msn.com](mailto:harrambide2@msn.com)

#### St. Lawrence Thrift Store Director

Bobbie Wolbach  
(435) 657-0209  
[stlthriftstore@gmail.com](mailto:stlthriftstore@gmail.com)



SCAN TO GIVE  
TO ST. MARY'S

## ONLINE GIVING

*Easily and securely make your donation online with the ability to make automatic payments from a credit or debit card.*

THANK YOU FOR YOUR GENEROSITY!



SCAN TO GIVE  
TO ST. LAWRENCE