

SAINT MARY'S CATHOLIC CHURCH • PARK CITY

1505 White Pine Canyon Rd. • Park City, UT 84060 • StMarysParkCity.com • (435) 649-9676



APRIL 12, 2026
DIVINE MERCY SUNDAY
THE SECOND SUNDAY OF EASTER

NEW WOMEN'S BIBLE STUDY
ABOUT DIVINE MERCY SUNDAY
MAJOR GIVING OPPORTUNITIES



ST. LAWRENCE

CATHOLIC MISSION • HEBER CITY

5 South 100 West • Heber City, UT 84032 • StMarysParkCity.com • (435) 654-4035

WELCOME TO ST. MARY'S PARISH

In 1881, God gave a small group of miners a mission to bring to these mountains the world's greatest treasure: the Body and Blood of Jesus Christ, the Eucharist, and the Faith and Charity that flow from Him.

Today, that mission has spread from the streets of Old Town Park City, to the meadows of White Pine Canyon, to the Heber Valley and beyond. St. Mary's Parish and St. Lawrence Mission seeks to evangelize, catechize, give back in Charity,

and enrich the community through the Catholic Faith and its intellectual, artistic, and cultural traditions. To bring all the treasure of Jesus Christ, for the salvation of souls, and the Greater Glory of God!

Newcomers and Visitors: Thank you for joining us. We invite you to learn more about St. Mary's Church at our website: StMarysParkCity.com.

BRINGING THE WORLD'S GREATEST TREASURE TO THE WASATCH BACK + SINCE 1881 +

MASS TIMES, CONFESSION, ADORATION, & VISITING HOURS



ST. MARY OF THE ASSUMPTION

1505 White Pine Canyon Rd, Park City 84060
(435) 649-9676 - StMarysParkCity.com

Office Hours (Mon-Thur) 8:30 AM - 5:00 PM

Saturday English Mass: 8 AM (1st Saturdays), 5:30 PM

Sunday English Mass: 8:00 AM, 10:30 AM

Domingo Misa en Español: 1:00 PM

Daily Mass: Mon - Fri 8:00 AM

Confession: Mon, Thurs, Sat 4:30 - 5:30 PM

Adoration Holy Hour: Mon 4:30 PM | Thu 8:30 AM

For Sunday Latin Mass and Vespers info, visit the website at StMarysParkCity.com/Latin.

Visiting Hours: Mon - Fri 7 AM - 8 PM

ST. MARY'S OLD TOWN CHAPEL

121 Park Ave, Park City 84060

Visiting Hours: Daily during daylight hours.



ST. LAWRENCE MISSION

5 South 100 West, Heber City 84032
(435) 654-4035 - StLawrenceMission.org

Office Hours (M/W) 9 AM - 5 PM, (Th) 9AM - 1 PM

Saturday English Mass: 5:00 PM

Sunday English Mass: 8:00 AM, 10:00 AM

Domingo Misa en Español: 12:00 PM

Daily Mass: Mondays and Thursdays 9:30 AM

Misa en Español: Miércoles 6:00 PM

Confession: Mondays and Thursdays 10:00 AM

Adoration + Confession: Wed. 5:00 PM - 6:00 PM

Visiting Hours: Mon - Fri 6 AM - 8 PM

ST. LAWRENCE THRIFT STORE

84 S 100 W, Heber City, UT 84032
(435) 657-0209 - StLawrenceThriftStore.com

Wed - Fri 10:00 AM - 6:00 PM, Sat 10:00 AM - 5:00 PM

FOR UPCOMING LITURGIES, VISIT STMARYSPARKCITY.COM/LITURGY

ABOUT DIVINE MERCY SUNDAY

In a series of revelations to St. Maria Faustina Kowalska in the 1930s, our Lord called for a special feast day to be celebrated on the Sunday after Easter. Today, we know that feast as Divine Mercy Sunday, named by Pope St. John Paul II at the canonization of St. Faustina on April 30, 2000.

The Lord expressed His will with regard to this feast in His very first revelation to St. Faustina. The most comprehensive revelation can be found in her Diary entry 699:

My daughter, tell the whole world about My inconceivable mercy. I desire that the Feast of Mercy be a refuge and a shelter for all souls, and especially for poor sinners. On that day the very depths of My tender mercy are open. I pour out a whole ocean of graces upon those souls who approach the fount of My mercy. The soul that will go to Confession and receive Holy Communion shall obtain complete forgiveness of sins and punishment. On that day are opened all the divine floodgates through which graces flow. Let no soul fear to draw near to Me, even though its sins be as scarlet. My mercy is so great that no mind, be it of man or of angel, will be able to fathom it throughout all eternity. Everything that exists has come from the very depths of My most tender mercy. Every soul in its relation to Me will contemplate My love and mercy throughout eternity. The Feast of Mercy emerged from My very depths of tenderness. It is My desire that it be solemnly celebrated on the first Sunday after Easter. Mankind will not have peace until it turns to the Fount of My mercy.



In all, St. Faustina recorded 14 revelations from Jesus concerning His desire for this feast.

Nevertheless, Divine Mercy Sunday is NOT a feast based solely on St. Faustina's revelations. Indeed, it is not primarily about St. Faustina — nor is it altogether a new feast. The Second Sunday of Easter was already a solemnity as the Octave Day of Easter. The title "Divine Mercy Sunday" does, however, highlight the meaning of the day.

DIVINE MERCY SCHEDULE

SUNDAY, APRIL 12 AT ST. MARY'S

Chaplet Sung at 3:00 PM | Mass to follow the chaplet

Confessions: 2:00 PM -4:00 PM

A soul that goes to Confession and receives Holy Communion on this day shall obtain complete forgiveness of sins and punishment due to sin. (Diary 699). Immense graces are promised for those who venerate the Divine Mercy image and pray the Chaplet, especially at the hour of death.



Come as you are.

YOU ARE WELCOME HERE

**Make authentic connections with other women
Refuel and refresh | Learn more about God**

Opening Your Heart: The Starting Point

This study explores the fundamental questions of our Catholic faith and our relationship with Jesus Christ. Join us as we examine the core questions that we need to wrestle with if we want to experience all that God has for us.

- How do I get my priorities in order?
- I've been going through the motions in my spiritual life—how does it relate to my day-to-day life?
- How do I get to know Christ in a personal way?



St. Mary's Catholic Church Room 103
Tuesday, April 14th , 22 week study
5:00 PM

<https://shop.walkingwithpurpose.com/products/opening-your-heart-study-guide>

Questions? Beth Hartung
913 208 3321 or Beth.Hartung@yahoo.com



walking with purpose

www.walkingwithpurpose.com

SUMMIT AT ST. MARY'S

WITH DR. SCOTT POWELL | SATURDAY, MAY 2ND AT 6:30PM

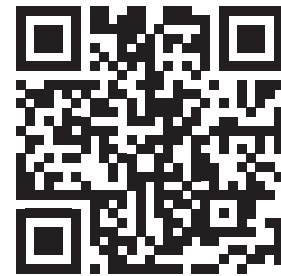


A TALE OF TWO KINGDOMS

How Jesus Invites Us into His Own Priesthood

Join us for our new date for the St. Mary's Summit with renowned Catholic speaker Scott Powell, a teacher, theologian, and author. He is a Professor of Theology at St. John Vianney Theological Seminary and co-founder of Camp Wojtyla, a Catholic outdoor adventure program in the Colorado Rockies. He holds a doctorate in Catholic Studies from Liverpool Hope University and has spoken internationally on theology, Scripture, and Catholic culture. Scott has appeared on EWTN, Catholic Answers Live, and several other outlets, and hosts the podcast "Sunday School" with The Pillar.

SCAN THE QR CODE
TO RSVP



Planning to upgrade your ski gear?

DONATE YOUR USED GEAR TO OUR ST. LAWRENCE THRIFT STORE

As winter winds down, now is the perfect time to clear out your gently used ski and snow gear, instead of storing it away for the summer. Your donations help us get a head start on inventory for our **Annual Ski Sale this November!**

Donation Locations & Hours:

Old Town Donation Center | 121 Park Ave, Park City
Monday - Saturday | 9AM - 4PM

Heber Donation Center | 84 S. 100 W., Heber
Tuesday 1PM - 5PM | Thursday 10 AM - 2PM

MAJOR EASTER GIVING OPPORTUNITIES

Looking to make a major gift this Easter season? Please consider the following opportunities!

HELP REPLACE THE ST. MARY'S ROOF



The original roof of St. Mary's Church will need to be replaced this summer.

\$850,000 has already been pledged for this \$1 million project. Your generous Easter gift to help raise the final \$150,000 needed will ensure this beautiful church, this sanctuary of Park City, can continue to welcome all to worship, to gather, and to receive the Body of Christ! Thank you!

SUPPORT THE DDD

The Diocesan Development Drive (DDD) is the best way you can support the greater Catholic Church in Utah! Your gifts help form the future priests of Utah, like our own seminarian Michael Weight and our own recently ordained Fr. Kenneth Parsad. Your support helps feed struggling families and children through Catholic Community Services of Utah. And your generosity provides for the less fortunate Catholic communities!

The Diocese of Salt Lake City has set St. Mary's 2026 DDD Quota at \$348,000 and St. Lawrence's DDD Quota at \$34,000. Our parish is required to pay the difference between what is given and the actual quota. Your generous gift will help raise what's still needed.



Thank you!



SCAN THE QR CODE TO GIVE DIRECTLY TO THE DDD. PLEASE SELECT SAINT MARY OF THE ASSUMPTION (2089) OR SAINT LAWRENCE MISSION (22026) TO ENSURE WE RECEIVE CREDIT FOR YOUR GIFT.

HELP US BRING THE BODY & BLOOD OF JESUS CHRIST TO THE WASATCH BACK

HELP BUILD A NEW ST. LAWRENCE MISSION



As the Heber Valley continues to grow, it is clear that the St. Lawrence community has outgrown our beautiful, historic church.

Bishop Solis has given us approval to move forward with the next steps of the building project. The new church will be built on an already owned 6 acre lot at the bustling intersection of Mill Rd. and Old Mill Dr. about 2 miles from the current church. Bishop Solis' vision is for St. Lawrence to continue to be a mission church of St. Mary's and that the new church will accommodate 600 people for Mass in addition to ample classroom and gathering space. In order to break ground, we will need to raise a total of \$14 million. We currently have a little over \$900,000 in our building fund (an increase of over 20% since July 1, 2025).

On Easter Sunday, 250 people packed St. Lawrence (which seats about 130 people). The downstairs classroom, which we use for overflow space was so full that we had to set up chairs in the hallway. Our weekend masses are getting fuller each week, regularly requiring the use of overflow space.

St. Lawrence's religious ed program is also filled to capacity with over 250 registered students (about the same number as St. Mary's).

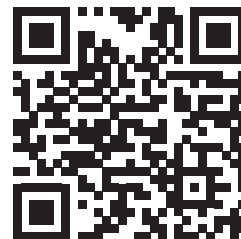
SCAN TO GIVE TO THE ST.
LAWRENCE BUILDING FUND



MAKE YOUR EASTER GIFT ONLINE



ST. MARY'S - PARK CITY



ST. LAWRENCE - HEBER CITY

StMarysParkCity.com/GIVE

or text STMARY GIVE to (833) 858-3376

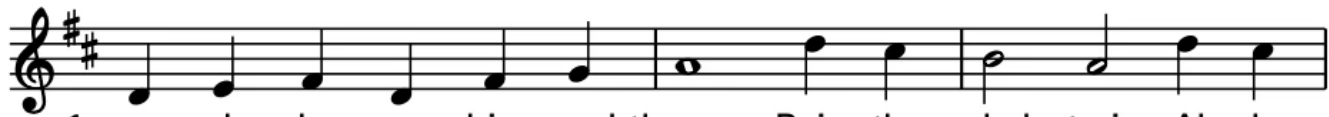
ENTRANCE HYMN

YE WATCHERS AND YE HOLY ONES

LASST UNS ERFREUEN



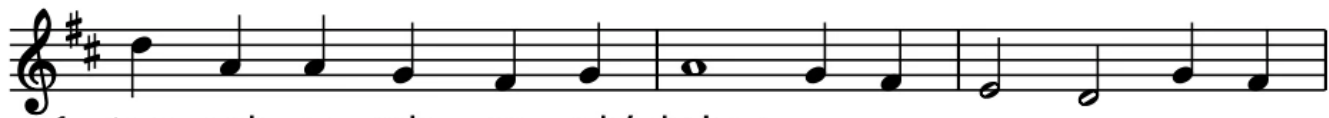
1. Ye watch - ers and ye ho - ly ones, Bright
2. Re - spond, ye souls in end - less rest, Ye
3. O friends, in glad - ness let us sing, Tri -



1. ser - apts, cher - u - bim, and thrones, Raise the glad strain, Al - le -
2. pa - tri - archs and proph - ets blest, Al - le - lu - ia! Al - le -
3. um - phant an - thems e - cho - ing, Al - le - lu - ia! Al - le -



1. lu - ia! Cry out, do - min - ions, prince - doms, powers, Vir -
2. lu - ia! Ye ho - ly Twelve, and mar - tyrs strong, All
3. lu - ia! To God the Fa - ther, God the Son, And



1. tues, arch - an - gels, an - gels' choirs, }
2. saints tri - um - phant, raise the song, } Al - le - lu - ia! Al - le -
3. God the Spir - it, Three - in - One, }



1-3. lu - ia! Al - le - lu - ia! Al - le - lu - ia! Al - le - lu - ia!

Text: LM with alleluias; *English Hymnal*, 1906; John A. Riley, 1858–1945. Music: *Auserlesene Catholische Geistliche Kirchengesänge*, Cologne, 1623.

All rights Reserved. Reprinted under One License A-607411

THAT YOU MAY COME TO BELIEVE THAT JESUS IS THE CHRIST, THE SON OF GOD, AND THAT THROUGH THIS BELIEF YOU MAY HAVE LIFE IN HIS NAME.

-JOHN 20:31

GLORIA

Introduction ♩ = 100

Glory to God

MASS FOR A SERVANT CHURCH
MICHEL GUIMONT

PIANO INTRO

f All Glo - ry to God in the high - est, and on earth peace to peo - ple of good will. *mf* We
praise you, we bless you, we a - dore — you, we glo - ri - fy —
you, we give you thanks for your great glo - ry,
Lord God, heav - en - ly King, — O God, al - might - y Fa - ther.
mp Lord Je - sus Christ, On - ly Be - got - ten Son, —
Lord God, Lamb of God, Son of the Fa - ther, *mf* you take a - way the
sins of the world, have mer - cy on us; *f* you take a - way the
sins of the world, re - ceive our prayer; you are seat - ed at the
right hand of the Fa - ther, have mer - cy on us. *PIANO*
mf For you a - lone are the Ho - ly One, you a - lone are the Lord,
you a - lone are the Most — High, Je - sus Christ,
with the Ho - ly Spir - it, — in the glo - ry of God the Fa - ther.
A - men, a - men, a — *rit.* — men.

RESPONSORIAL PSALM

PSALM 118: SECOND SUNDAY OF EASTER



R. Give thanks to the Lord for he is good, his love is ev-er - last - ing.

Text © 1969, 1981, 1997, ICEL. All rights reserved. Used with permission.

Music: Owen Alstott, © 1977, 1990, OCP. All rights reserved.

All rights Reserved. Reprinted under One License A-607411

*No collection is taken during Mass. You may give by using the envelopes in the pew in front of you.
Thank you for your generosity.*

PREPARATION OF GIFTS WE WALK BY FAITH



1., 5. We walk by faith, and not by sight; No
2. We may not touch his hands and side, Nor
3. Help then, O Lord, our un - be - lief; And
4. That, when our life of faith is done, In



gra - cious words we hear From him who spoke as
fol - low where he trod; But in his prom - ise
may our faith a - bound To call on you when
realms of clear - er light We may be - hold you



none e'er spoke; But we be - lieve him near.
we re - jice, And cry, "My Lord and God!"
you are near, And seek where you are found:
as you are, With full and end - less sight.

Text: Henry Alford, 1810-1871, alt.

Tune: SHANTI, CM; Marty Haugen, b.1950, © 1984, GIA Publications, Inc.

All rights Reserved. Reprinted under One License A-607411

SANCTUS

Holy, Holy, Holy

♩ = 100

MASS FOR A SERVANT CHURCH
MICHEL GUIMONT

PIANO INTRO

mf Ho - ly, Ho - ly, Ho - ly Lord God of Hosts. Heav'n and earth are full of your glo - ry. Ho - san - na in the high - est. *mf* Bless - ed is he who comes in the name of the Lord. *f* Ho - san - na in the high - est.

cresc. *rit.*

All rights Reserved. Reprinted under One License A-607411

AGNUS DEI

LAMB OF GOD

mp Lamb of God, you take a - way the sins of the world, have mer - cy on us. Lamb of God, you take a - way the sins of the world, have mer - cy on us. Lamb of God, you take a - way the sins of the world, *rit.* grant us peace.

All rights Reserved. Reprinted under One License A-607411

COMMUNION HYMN

EYE HAS NOT SEEN

Refrain



Eye has not seen, ear has not heard what God has read-y for



those who love him; Spir-it of love, come, give us the mind of

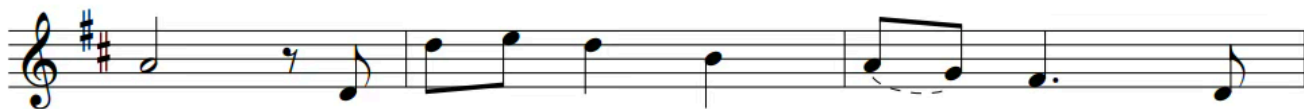


Je - sus, teach us the wis - dom of God.

Verses 1-3



1. When pain and sor - row weigh us down, be near to us, O
2. Our lives are but a sin - gle breath, we flow-er and we
3. To those who see with eyes of faith, the Lord is ev - er



Lord; for - give the weak - ness of our faith, and
 fade, yet all our days are in your hands, so
 near, re - flect - ed in the fac - es of



bear us up with - in your peace-ful word.
 we re - turn in love what love has made.
 all the poor and low - ly of the world.

Verse 4

4. We sing a mys-t'ry from the past in halls where saints have
trod, yet ev-er new the mu-sic rings to
Je-sus, Liv-ing Song of God. **D.C.**

Text: 1 Corinthians 2:9-10; Marty Haugen, b.1950
Tune: Marty Haugen, b.1950
© 1982, GIA Publications, Inc.

All rights Reserved. Reprinted under One License A-607411

“DO NOT ABANDON YOURSELVES TO DESPAIR. WE ARE THE EASTER PEOPLE AND HALLELUJAH IS OUR SONG.”

-ST. POPE JOHN PAUL II

HYMN OF PRAISE THOUGH NOT SEEING YOU

Bob Hurd

Refrain
Though not see-ing you, still we love you. Though not
see-ing you, we be-lieve. By your ris-ing, Lord Je-sus, you have
giv-en us new birth; you have giv-en us new birth.

1. You pass through doors that keep us locked in
 2. With the breath of your Spir - it you have
 3. With your peace you sus - tain us, peace the
 4. Though in glo - ry, you show us wound - ed
 5. Your ___ hand is up - on us, touch - ing
 6. Give us eyes for the King - dom, help our
 7. Sing ___ praise to the Fa - ther, sing ___



1. fear and de - spair. E - ven when doubt as -
 2. made us your own. Make us in - stru - ments
 3. world can - not give. May your peace reign a -
 4. hands, wound - ed side, one with all the world's
 5. wounds, heal - ing pride, and with love now we
 6. lack of be - lief. "Blest are those who have
 7. praise to the Son, to the Spir - it who



1. sails us, ___ still you are there.
 2. of your re - con - cil - ing love.
 3. mong us and our war - ring end.
 4. suf - f'ring, ___ the Cru - ci - fied.
 5. cry out: ___ "My Lord and God."
 6. not seen, ___ and have be - lieved."
 7. leads us ___ all praise be sung.

Text: Refrain based on 1 Peter 1:3-9; Verses based on John 20:19-31. Text and music © 2006, Bob Hurd.
 Published by OCP. All rights reserved.

All rights Reserved. Reprinted under One License A-607411

PRAYER OF THANKSGIVING AFTER COMMUNION

Dear sweet Jesus, I kneel before you and give you thanks for the great treasure of the Most Blessed Sacrament. May it nourish me with a lively faith and with true repentance. May your cross be my strength, your resurrection be my life, and your grace be my sure confidence. With the Father and the Holy Spirit, your love is the full satisfaction of my desire, my refreshment, and my own love. May you be glorified in all things everywhere and may your peace be the joy of all people.

AMEN.

RECESSIONAL

JOYFUL, JOYFUL, WE ADORE THEE

HYMN TO JOY



1. Joy - ful, joy - ful, we a - dore thee, God of glo - ry,
2. All thy works with joy sur - round thee, Earth and heav'n re -
3. Thou art giv - ing and for - giv - ing, Ev - er bless - ing,
4. Mor - tals, join the might - y cho - rus Which the morn - ing



1. Lord of love; Hearts un - fold like flow'rs be - fore thee,
2. flect thy rays, Stars and an - gels sing a - round thee,
3. ev - er blest, Well-spring of the joy of liv - ing,
4. stars be - gan; Love di - vine is reign - ing o'er us,



1. O - p'ning to the sun a - bove. Melt the clouds of
2. Cen - ter of un - bro - ken praise; Field and for - est,
3. O - cean depth of hap - py rest! Thou our Fa - ther,
4. Bind - ing all with - in its span. Ev - er sing - ing,



1. sin and sad - ness; Drive the dark of doubt a - way;
2. vale and moun - tain, Flow - 'ry mead - ow, flash - ing sea,
3. Christ our broth - er, All who live in love are thine;
4. march we on - ward, Vic - tors in the midst of strife;



1. Giv - er of im - mor - tal glad - ness, Fill us with the light of day.
2. Chant - ing bird and flow - ing foun - tain, Call us to re - joice in thee.
3. Teach us how to love each oth - er, Lift us to the joy di - vine.
4. Joy - ful mu - sic leads us sun - ward, In the tri - umph song of life.

Text: 87 87 D; Henry van Dyke, 1852–1933, alt.
 Music: Ludwig van Beethoven, 1770–1827; adapted by Edward Hodges, 1796–1867.

All rights Reserved. Reprinted under One License A-607411

RECEIVE CUSTOMIZED TEXT & EMAIL UPDATES

Find out about all our groups, weekly series, & ministries and choose what info you'd like to receive from them.

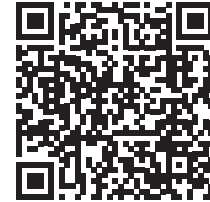
SIGN-UP OPTION 1

TEXT **MARYPC** to **84576** from your phone

SIGN-UP OPTION 2

VISIT StMarysParkCity.com/DIGITAL-CONTENT

LISTEN TO THIS WEEKEND'S HOMILY FROM FR. DASS



STAFF LEADERSHIP

Pastor

Fr. Arokia Dass David
frdass@stmarysparkcity.com

Parochial Vicar

Fr. Kenneth Rey Parsad
frparsad@stmarysparkcity.com

OCIA & Baptism

Deacon Tom Tosti
(435) 783-5831 - ttosti@stmarysparkcity.com

St. Mary's Parish Administrator

Sandy Foley
(435) 940-5455 - sfoley@stmarysparkcity.com

St. Lawrence Administrator & Parish Communications

Justin Hibbard
(410) 353-1022 - jhibbard@stmarysparkcity.com

Director of Charity

Maria Villar
(801) 652-5039 - mvillar@stmarysparkcity.com

St. Mary's Dir. of Rel. Ed. & Safe Environment

Lauri Hawkins
(435) 940-5453 - lhawkins@stmarysparkcity.com

St. Lawrence Dir. of Rel. Ed. & Save Environment

Andreina Payan
andreina@saintlawrenceheber.com

Dir. of Evangelization

Anthony Jewett
(435) 237-5531 - ajewett@stmarysparkcity.com

Marriage Prep

Nancy Tosti
ntosti@stmarysparkcity.com

Receptionist and Dir. of Hispanic Ministry

Gracie Cortes
(435) 649-9676 - gcortes@stmarysparkcity.com

Director of St. Mary's Music Ministry

Joe Demers
saintmarysmusicministry@gmail.com

Baptism Classes at St. Lawrence (español)

Hugo Arrambide
harrambide2@msn.com

St. Lawrence Thrift Store Director

Bobbie Wolbach
(435) 657-0209
stlthriftstore@gmail.com



SCAN TO GIVE
TO ST. MARY'S

ONLINE GIVING

Easily and securely make your donation online with the ability to make automatic payments from a credit or debit card.

THANK YOU FOR YOUR GENEROSITY!



SCAN TO GIVE
TO ST. LAWRENCE