

SAINT MARY'S

CATHOLIC CHURCH • PARK CITY

1505 White Pine Canyon Rd. • Park City, UT 84060 • StMarysParkCity.com • (435) 649-9676



24 MARCH 2024
PALM SUNDAY
OF THE LORD'S PASSION

CHECK THE UPCOMING MASS SCHEDULE
FOR THE SACRED TRIDUUM
DURING HOLY WEEK!

MASS TIMES + MUSIC + MORE

WELCOME TO ST. MARY'S

In 1881, God gave a small group of miners a mission to bring to these mountains the world's greatest treasure: the Body and Blood of Jesus Christ, the Eucharist, and the Faith and Charity that flow from Him.

Today, that mission has spread from the streets of Old Town Park City, to the meadows of White Pine Canyon, to the Heber Valley and beyond. St. Mary's seeks to evangelize, catechize, give back in Charity, and enrich the community through the Catholic Faith and its intellectual, artistic, and cultural traditions. To bring all the treasure of Jesus Christ, for the salvation of souls, and the Greater Glory of God!

Newcomers and Visitors: Thank you for joining us. We invite you to learn more about St. Mary's Church at our website: StMarysParkCity.com.

ARE YOU A VISITOR?

ON VACATION?

WE WANT TO HEAR
WHERE YOU ARE FROM!

SEE OUR GUEST MAP

GO TO:
STMARYSPARKCITY.COM/GUEST-MAP

FILL OUT THE SURVEY

AND WE'LL ADD A PIN
TO FILL UP THE MAP!

HOLY WEEK SCHEDULE CHANGE

Due to Holy Week, our usual liturgy times are affected (**No daily Mass Thursday or Friday; Saturday/Sunday Mass time changes**)! See our usual schedule on our website at StMarysParkCity.com. The beginning of this week, come join us for prayer in so many ways!

M

MONDAY, MARCH 25

DAILY MASS, MORNING COFFEE, ADORATION

Daily Mass will be offered at 8 AM, followed by Virtual Morning Coffee at 9 AM. Log on at StMarysParkCity.com/coffee. In the evening, join us for an Adoration Holy Hour at 5 PM!

T

TUESDAY, MARCH 26

MASS, COFFEE, STATIONS OF THE CROSS, CONFESSION

Daily Mass will be offered at 8 AM, followed by Morning Coffee at 9 AM at StMarysParkCity.com/coffee. Stations of the Cross at Old Town at 11 AM. Confession will be offered from 4:30 - 5:30 PM at main church.

W

WEDNESDAY, MARCH 27

DAILY MASS AND MORNING COFFEE

Daily Mass will be offered at 8 AM, followed by Virtual Morning Coffee at 9 AM. Log on at StMarysParkCity.com/coffee.

T

THURSDAY, MARCH 28

TENEBRAE, CONFESSIONS, MASS AND ADORATION

Join us in the tradition of praying Tenebrae at 4:30 AM. Confession will be offered at 4:30 PM. Mass of the Lord's Supper at 6 PM followed by Adoration at 7 PM.

SCAN
TO SEE
USUAL
ST. MARY'S
ST.
LAWRENCE
MASS,
VISITING
TIMES



HOLY WEEK LITURGIES

AT ST. MARY'S

HOLY THURSDAY

MASS OF THE LORD'S SUPPER

Thursday, March 28 at 6 PM

Followed by Adoration in the social hall.

GOOD FRIDAY

CELEBRATION OF THE PASSION OF OUR LORD

Friday, March 29 at 6 PM

HOLY SATURDAY

HOLY SATURDAY PASCHAL VIGIL

Saturday, March 30 at 8:45 PM

EASTER SUNDAY

THE RESURRECTION OF OUR LORD

Sunday, March 31 at 7:30 AM - *English*

Sunday, March 31 at 9:00 AM - *English*

Sunday, March 31 at 10:30 AM - *English*

Sunday, March 31 at 12:00 PM - *English*

Sunday, March 31 at 2:00 PM - *Spanish*

Sunday, March 31 at 4:00 PM - *Latin*

*For Mass times at St. Lawrence in Heber and for Divine Mercy Sunday, please
check the live liturgical calendar at StMarysParkCity.com/Liturgy.*

Thank you!



SPECIAL LENTEN GIVING OPPORTUNITIES

As a part of your Lenten Almsgiving, if you are looking to make a special gift, please consider the following opportunities. For more info, please email jhibbard@stmarysparkcity.com Thank you!

SHINE A LIGHT!



Each month, St. Mary's hosts dozens of events in our social hall, from our monthly parish-wide Summits, to Children's Religious Education, to Red Cross Blood Drives, to our partners Holy Cross Ministries School Readiness Program, to after-Mass brunches, to the PC Highschool' Band's Gala, to the St. Paddy's Day Celebration, to Park City EATS events, and many more!

And the social hall is in need of renovations to its lighting system. Your generous gift towards this \$75,000 will ensure our social hall can shine a light on St. Mary's ministries, events, and community partners!

ANSWER THE CALL

St. Mary's campus-wide phone, security camera, and wifi system are in need of a complete upgrade. **\$35,000 is still needed for this project. Your generous gift will ensure the safety of all and the ability of the parish to best serve you.**

MAKE YOUR RECOMMITMENT TO GIVE



The **Recommitment to Give** is St. Mary's annual offertory pledge program. It's an opportunity for you to **please prayerfully commit to a generous 12-month pledge of support to St. Mary's general fund . . . an opportunity to give the first of your treasure to Christ!**

The easiest way to make your pledge is just to **scan the QR code above to sign up for (or increase your) automatic giving through your bank account or card now.**

You can also give through check, a charitable distribution through you IRA, your Donor Advised Fund, or through stock!

Learn More at StMarysParkCity.com/PLEDGE

BRING CHRIST TO ALL

Transform St. Mary's Charitable Ministries

THROUGH THE NEW DIRECTOR OF CHARITY & MORE

During the pandemic, your gifts provided hundreds of thousands of dollars in assistance, food, clothes, healthcare, educational services, and more to local families in need. Thank you!

Today, the demand for assistance not only remains far higher than pre-pandemic levels, but is now growing. St. Mary's provides upwards of \$150,000 each year in financial and food assistance to hundreds of local families. Yet, the need is much higher, and with additional staff and financial support, St. Mary's could provide for far more.



To that end, **for the first time ever, St. Mary's has invested in a full-time social services staff member. Bi-lingual parishioner and social services professional Maria Villar is now Director of Charity!** In this new role, Maria helps better meet the needs of those served by our growing assistance programs. Additionally, she offers counseling services, greatly assists and coordinates with ministries like the Gabriel Project and the Food Bank, further collaborates with community partners like Holy Cross Ministries and Peace House, and develops new programs to bring Christ to all in the Wasatch Back!

To continue to be able to support this new role and transform the parish's ability to provide for the growing need in the community, St. Mary's seeks to partner with heroic supporters to raise an additional \$250,000 this year for charitable outreach.

Would you please prayerfully consider making a generous gift in support of this effort?



SIGN-UP FOR NOTIFICATIONS

EMAIL AND SOCIAL MEDIA UPDATES

GET THE MOST OUT OF THE
COOLEST PARISH IN UTAH!

*Do you regularly come to St. Mary's? Then see beyond what's in the bulletin by signing-up for digital updates! **Even if you already signed up, make sure your contact info is up-to-date!** Get all the important news on upcoming events, liturgy schedule changes, photos, E-reflections, and more!*

STMARYSPARKCITY.COM



HOW TO SIGN UP FOR FLOCKNOTE

GET TEXT AND EMAIL UPDATES FROM ST. MARY'S

1

Want to get notified of important updates? Visit the St. Mary's website by going to: StMarysParkCity.com

2

Scroll to the bottom of any page and click the link that says "Text and Email Updates." This will take you to the St. Mary's Flocknote group.

3

Enter your contact information and click the green button that says "Sign Me Up." You can update your notification preferences, email, and phone number.



OR SCAN THE QR CODE

SEE ALL THE PHOTOS FROM THE KOFc ST. PATRICK'S DAY PARTY

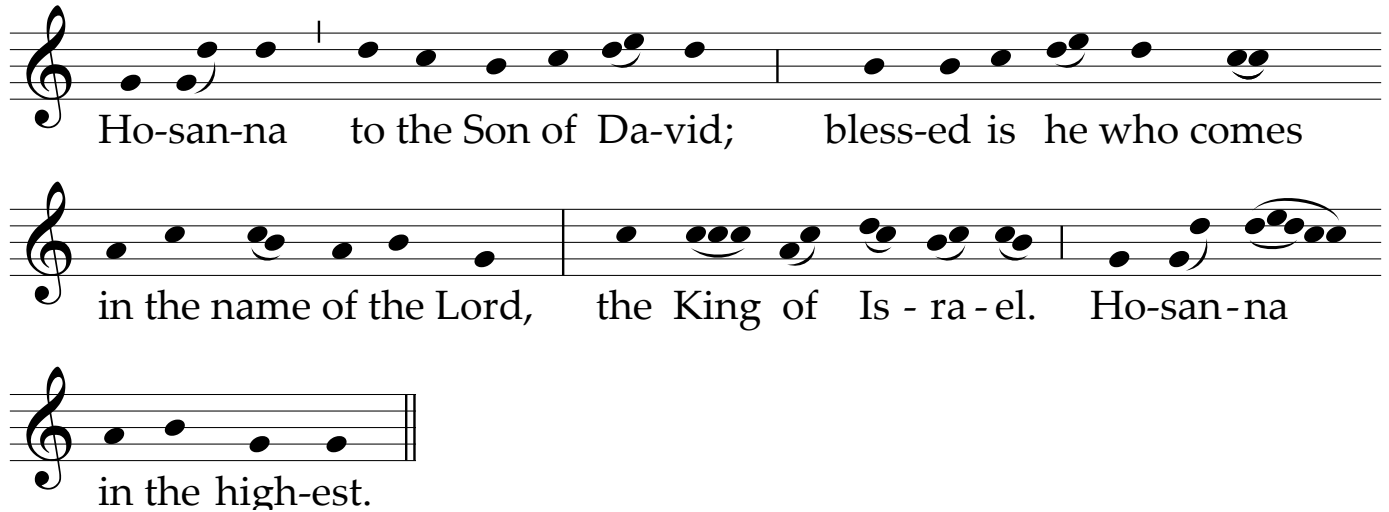
Thank you to the hardworking Knights of Council 1129 for hosting the annual St. Patrick's Day Party last Saturday! Everyone had a blast and the food and drinks were good! We hope all who came had a good time.

To see all the photos, check out the St. Mary's Flickr page linked at the bottom of the website!



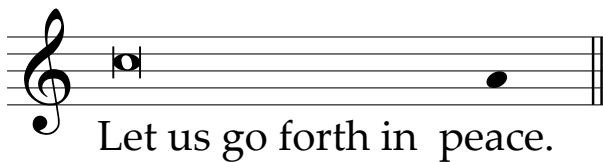
Readings for this weekend's Mass can be found on page 336 of the blue book.

ENTRANCE ACCLAMATION



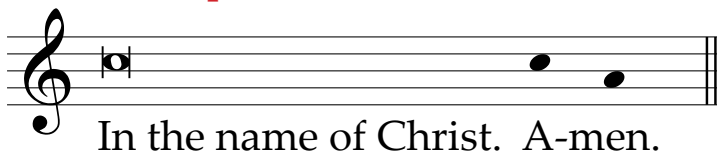
Ho-san-na to the Son of Da-vid; bless-ed is he who comes
in the name of the Lord, the King of Is - ra - el. Ho-san-na
in the high-est.

After the first Gospel, the procession into the church begins, with all using the following response.



Let us go forth in peace.

All respond:

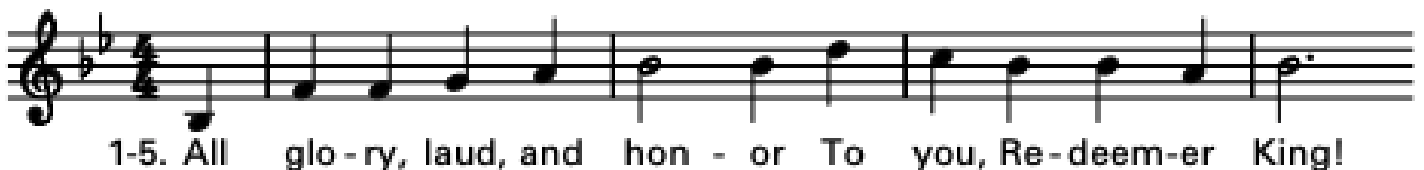


In the name of Christ. A-men.

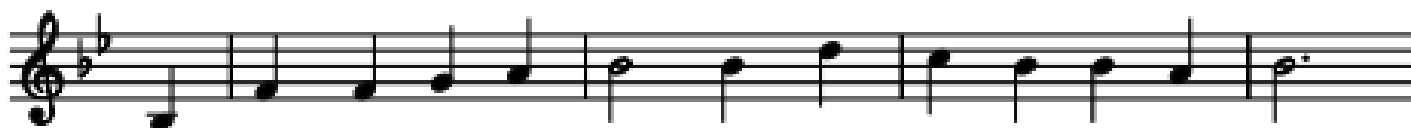
ENTRANCE HYMN

ALL GLORY, LAUD, AND HONOR

ST. THEODULPH



1-5. All glo - ry, laud, and hon - or To you, Re-deem-er King!



1-5. To whom the lips of chil - dren Made sweet ho - san - nas ring.



1. You are the King of Is - ra - el, And Da - vid's roy - al Son,
2. The com - pa - ny of an - gels Are prais - ing you on high;
3. The peo - ple of the He - brews With palms be - fore you went:
4. To you be - fore your pas - sion They sang their hymns of praise:
5. Their prais - es you ac - cept - ed, Ac - cept the prayers we bring,



1. Now in the Lord's Name com - ing, Our King and Bless - ed One.
2. And mor - tals, joined with all — things Cre - a - ted, make re - ply.
3. Our praise and prayers and an - thems Be - fore you we pre - sent.
4. To you, now high ex - alt - ed, Our mel - o - dy we raise.
5. Great source of love and good - ness, Our Sav - ior and our King.

Text: 76 76 D; Theodulph of Orleans, ca. 760–821; tr. by John M. Neale, 1818–1866, alt., *Hyman! Noted*, 1854.

Music: Melchior Teschner, 1584–1635.

All rights Reserved. Reprinted under One License A-607411

RESPONSORIAL PSALM

PSALM 22 (*Psalm 22*)

(Psalm 22: 8-9, 17-18, 19-20, 23-24)

Francesca LaRosa



My God, my — God, why have you a - ban - doned me?

Music Copyright © 2021 Francesca LaRosa. Music by Francesca LaRosa.

The English translation of the Psalm Response from Lectionary for Mass © 1969, 1981, 1997, International Commission on English in the Liturgy Corporation.
All rights reserved. Used with permission.

All rights Reserved. Reprinted under One License A-607411

AGNUS DEI

LAMB OF GOD

Chant



A - gnus De - i, qui tol - lis pec - cá - ta mun - di: mi - se - ré - re no - bis.



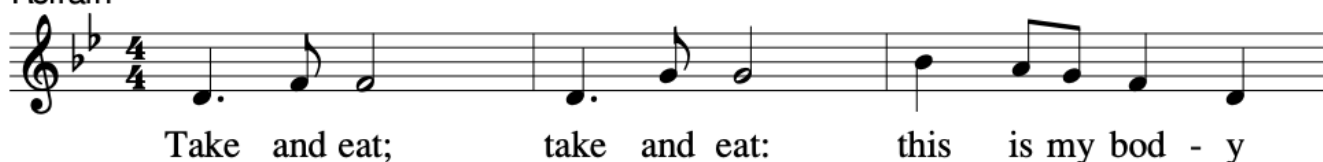
Music: *Graduale Romanum*, 1974.

All rights Reserved. Reprinted under One License A-607411

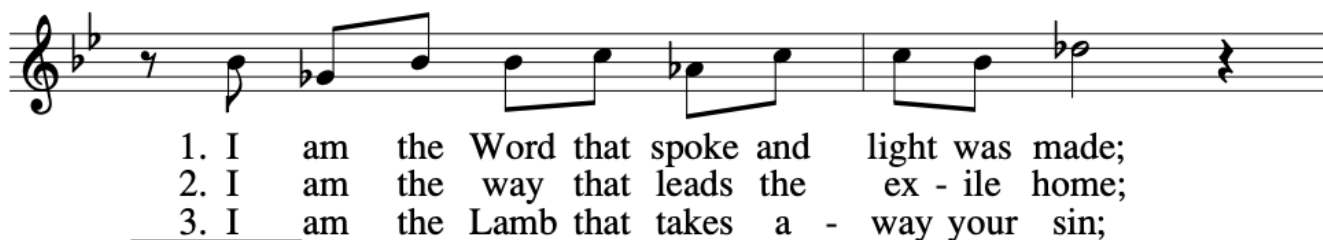
COMMUNION HYMN

TAKE AND EAT

Refrain



Verses





I am the bread that comes from heav'n a - bove;
I am the life that rais - es up the dead;
You are my flock: you know the shep-herd's voice;



I am the vine that fills your cup with joy.
I am your peace, true peace my gift to you.
You are my own: your ran - som is my blood.

Text: Verse text, James Quinn, SJ, b.1919, © 1989. Used by permission of Selah Publishing Co., Inc., Kingston, NY 12401, North American agent.;
refrain text, Michael Joncas, b.1951, © 1989, GIA Publications, Inc.
Tune: Michael Joncas, b.1951, © 1989, GIA Publications, Inc.

All rights Reserved. Reprinted under One License A-607411

SONG OF PRAISE

JESUS, REMEMBER ME

Ostinato Refrain

Je - sus, re - mem-ber me when you come in - to your King-dom.
Spanish: Je - sús, re - cuér - da - me cuan - do en - tres en tu Rei - no.
Polish: Je - zu, w kró - les - twie Twym wspom - nij na swo - je - go słu - ę.

Je - sus, re - mem-ber me when you come in - to your King-dom.
Je - sús, re - cuér - da - me cuan - do en - tres en tu Rei - no.
Je - zu, w kró - les - twie Twym wspom - nij na swo - je - go słu - ę.

Text: Luke 23:42; Taizé Community, 1981
Tune: Jacques Berthier, 1923-1994
© 1981, 2005, Les Presses de Taizé, GIA Publications, Inc., agent

All rights Reserved. Reprinted under One License A-607411

PARISH SERVICE ANNOUNCEMENTS

SIGN UP FOR ST. MARY'S DAILY E-REFLECTIONS

To get St. Mary's own
Daily E-Reflections, text
Reflections to **84576** from
your smartphone or visit

StMarysParkCity.com/reflections.

FOOD BANK HELP WANTED

St. Mary's food bank is always in need of the following items: masa flour, dried pinto or black beans, white rice, vegetable oil, canned corn, canned fruit, pasta, sauce, mac n cheese, and canned tuna. If you are interested in volunteering and available for a couple hours on Tuesdays between 12 and 4:00 PM, please contact Sarah Dellenbach at 801-487-4515. Thank you!

MASS AND PRAYER INTENTIONS

To submit Mass or prayer intentions, visit **StMarysParkCity.com/intentions**, or **call or email for more info: (435) 649-9676 / gcortes@stmarysparkcity.com.**

Si Usted desea solicitar una intención para una Misa, favor de visitar StMarysParkCity.com/intentions o llamar a la oficina y hablar con Gracie Cortés para mas información. (435) 649-9676 / gcortes@stmarysparkcity.com.

NEWS FROM THE FRONT DESK OFFICE HELP NEEDED

Contact Sandy Foley: sfoley@stmarysparkcity.com

STAFF LEADERSHIP

Pastor

Fr. Christopher Gray

Call/Text or Schedule: stmarysparkcity.com/frgray

Parochial Vicar

Fr. Paulraj Rayappa

prayappa@stmarysparkcity.com

RCIA, Baptismal & Marriage Prep

Deacon Tom Tosti

(435) 783-5831 - ttosti@stmarysparkcity.com

Baptismal & Marriage Prep

Deacon Bob Hardy

(801) 414-0638 - bhardy@stmarysparkcity.com

Parish Administrator

Sandy Foley

(435) 940-5455 - sfoley@stmarysparkcity.com

Development

Justin Hibbard

(410) 353-1022 - jhibbard@stmarysparkcity.com

Director of Charity

Maria Villar

(435) 940-5452 - mvillar@stmarysparkcity.com

Dir. of Rel. Ed., Middle & H.S. Youth, & Safe Env.

Lauri Hawkins

(435) 940-5453 - lhawkins@stmarysparkcity.com

Dir. of Evangelization

Anthony Jewett

(435) 237-5531 - ajewett@stmarysparkcity.com

Receptionist and Dir. of Hispanic Ministry

Gracie Cortes

(435) 649-9676 - gcortes@stmarysparkcity.com

Director of Music Ministry

Joe Demers

saintmarysmusicministry@gmail.com

BROWSE THE ONLINE
ST. MARY'S
BUSINESS DIRECTORY

Have an upcoming project? Need a contractor or service and want to support small businesses? Browse the online Business Directory to find locals and support the St. Mary's Community. Find and submit your own.

..... STMARYSPARKCITY.COM/BUSINESS-DIRECTORY