

# SAINT MARY'S CATHOLIC CHURCH • PARK CITY

1505 White Pine Canyon Rd. • Park City, UT 84060 • [StMarysParkCity.com](http://StMarysParkCity.com) • (435) 649-9676



22 FEBRUARY 2026  
FIRST SUNDAY  
OF LENT

WE ARE ONE PARISH  
**STATIONS OF THE CROSS**

WOMEN'S LENT BIBLE STUDY



**ST. LAWRENCE**  
CATHOLIC MISSION • HEBER CITY

5 South 100 West • Heber City, UT 84032 • [StMarysParkCity.com](http://StMarysParkCity.com) • (435) 654-4035

# WELCOME TO ST. MARY'S PARISH

In 1881, God gave a small group of miners a mission to bring to these mountains the world's greatest treasure: the Body and Blood of Jesus Christ, the Eucharist, and the Faith and Charity that flow from Him.

Today, that mission has spread from the streets of Old Town Park City, to the meadows of White Pine Canyon, to the Heber Valley and beyond. St. Mary's Parish and St. Lawrence Mission seeks to evangelize, catechize, give back in Charity,

and enrich the community through the Catholic Faith and its intellectual, artistic, and cultural traditions. To bring all the treasure of Jesus Christ, for the salvation of souls, and the Greater Glory of God!

*Newcomers and Visitors: Thank you for joining us. We invite you to learn more about St. Mary's Church at our website: [StMarysParkCity.com](http://StMarysParkCity.com).*

## BRINGING THE WORLD'S GREATEST TREASURE TO THE WASATCH BACK + SINCE 1881 +

### MASS TIMES, CONFESSION, ADORATION, & VISITING HOURS



#### ST. MARY OF THE ASSUMPTION

1505 White Pine Canyon Rd, Park City 84060

(435) 649-9676 - [StMarysParkCity.com](http://StMarysParkCity.com)

Office Hours (Mon-Thur) 8:30 AM - 5:00 PM

Saturday English Mass: 8 AM (1<sup>st</sup> Saturdays), 5:30 PM

Sunday English Mass: 8:00 AM, 10:30 AM

Domingo Misa en Español: 1:00 PM

Daily Mass: Mon - Fri 8:00 AM

Confession: Mon, Thurs, Sat 4:30 - 5:30 PM

Adoration Holy Hour: Mon 4:30 PM | Thu 8:30 AM

*For Sunday Latin Mass and Vespers info, visit the website at [StMarysParkCity.com/Latin](http://StMarysParkCity.com/Latin).*

Visiting Hours: Mon - Fri 7:30 AM - 6:00 PM

#### ST. MARY'S OLD TOWN CHAPEL

121 Park Ave, Park City 84060

Visiting Hours: Daily during daylight hours.



#### ST. LAWRENCE MISSION

5 South 100 West, Heber City 84032

(435) 654-4035 - [StLawrenceMission.org](http://StLawrenceMission.org)

Office Hours (M/W) 9 AM - 5 PM, (Th:) 9AM - 12 PM

Saturday English Mass: 5:00 PM

Sunday English Mass: 8:00 AM, 10:00 AM

Domingo Misa en Español: 12:00 PM

Daily Mass: Mondays and Thursdays 9:30 AM

Misa en Español: Miércoles 6:00 PM

Confession: Mondays and Thursdays 10:00 AM

Adoration + Confession: Wed. 5:00 PM - 6:00 PM

#### ST. LAWRENCE THRIFT STORE

84 S 100 W, Heber City, UT 84032

(435) 657-0209 - [StLawrenceThriftStore.com](http://StLawrenceThriftStore.com)

Wed - Fri 10:00 AM - 6:00 PM, Sat 10:00 AM - 5:00 PM

For upcoming liturgies, visit [StMarysParkCity.com/LITURGY](http://StMarysParkCity.com/LITURGY)

# THIS WEEK AT A GLANCE

MEMORIALS, FEAST DAYS, & SOLEMNITIES FOR UNITED STATES

MON, FEB 23 - MEMORIAL OF ST. POLYCARP, BISHOP & MARTYR

FRI, FEB 27 - MEMORIAL OF ST. GREGORY OF NAREK, DOCTOR

ENDOW FOR HIGH SCHOOL GIRLS

TONIGHT (SUNDAY) - 5:45 - 7:15PM  
AT ST. MARY'S PARISH CENTER INFORMAL SPACE

ADORATION

ST. MARY'S - MONDAYS AT 4:30PM, THURSDAYS AT 8:30AM  
ST. LAWRENCE - WEDNESDAYS AT 5PM

ONLINE BIBLE STUDY WITH FR. PARSAD

THURSDAY (FIRST & THIRD THURSDAY)  
AT 6:30PM ON ZOOM



STATIONS OF THE CROSS

ST. MARY'S - FRIDAYS AT 3PM (ENGLISH), 7PM SPANISH  
ST. LAWRENCE - FRIDAYS AT 6PM (BILINGUAL)

JOIN A COMMUNITY GROUP

ST. MARY'S & ST. LAWRENCE OFFERS MANY COMMUNITY GROUPS.  
FIND YOURS AT [STMARYSPARKCITY.COM/GROUPS](http://STMARYSPARKCITY.COM/GROUPS)

Have a group or event that you would like to be included in the bulletin? Scan the QR code and fill out the form.



# WE ARE ONE PARISH

## A MESSAGE FROM YOUR PASTOR - FR. DASS

As you may have noticed this week, we have moved to a single shared bulletin for St. Mary's and St. Lawrence (with the music pages printed only in St. Mary's bulletin).

This is one more small step in a very intentional effort to grow as a more united parish across the Wasatch Back. In our conversations about the possibility of building a new church in the Heber Valley, Bishop Solis emphasized his vision that St. Mary's and St. Lawrence continue not only as a unified parish, but as one parish family with an even stronger bond. Scripture reminds us: "There is one body and one Spirit... one Lord, one faith, one baptism" (Ephesians 4:4-5).

There are some misunderstandings about what this means, so I would like to clarify a few points:

### **Pastoral Structure**

Our parish is served by two priests and one deacon. I serve as Pastor of both St. Mary's and St. Lawrence. Fr. Parsad is the Parochial Vicar for both communities, and Deacon Tom Tosti serves both as well. We will continue to work together and remain visible in both communities. Fr. Parsad and I alternate weekend Masses. I primarily serve weekday Masses at St. Mary's, while Fr. Parsad primarily serves weekday Masses at St. Lawrence. This arrangement is intentional and meant to strengthen unity and show that both communities are essential parts of our parish. As St. Paul teaches: "Now you are the body of Christ and individually members of it" (1 Corinthians 12:27).

### **Financial Structure**

St. Mary's and St. Lawrence maintain separate financial records. Contributions given to each community are used primarily for that community's needs. However, as a mission, St. Lawrence is not yet fully self-supporting, and St. Mary's helps offset some shared costs and

resources. St. Lawrence is not *just* a mission, it *is* St. Mary's mission of bringing the Church's greatest treasure to the Heber Valley.

### **Parish Council**

Our parish council includes members from both communities. Kimberly Tosti, who regularly attends St. Mary's, serves as Parish Council President, and Claude Bethea, who regularly attends St. Lawrence, serves as Vice President. The council addresses the needs and challenges of both communities at each meeting.

### **Registration**

Each community maintains its own registration records. If you regularly attend St. Mary's, please register there. The same applies to St. Lawrence. If you regularly attend both, you are welcome to register at both. This helps us keep accurate records for pastoral care and diocesan reporting.

### **Growth in the Heber Valley**

As many of you know, the Heber Valley is experiencing rapid growth, and this is clearly reflected at St. Lawrence. Mass attendance continues to increase, and religious education enrollment is approaching the numbers at St. Mary's. These are good and hopeful signs. The Catholic faith is growing steadily across the Wasatch Back. "The harvest is abundant but the laborers are few" (Luke 10:2).

We are now entering a new phase of this growth as we look toward building a new church to serve the increasing number of Catholics in Wasatch County. Just as the faithful of Summit and Wasatch Counties came together 30 years ago to build the White Pine Canyon campus, we are now invited to come together again to build a new campus in the Heber Valley.

### **One Parish Family**

Those who live between St. Mary's and St. Lawrence may already attend Mass and events at both locations. Others may have attended only one community. If that is the case, I encourage you to in-

tentionally take part in events at both churches. We'll help by increasing communication about events in Summit and Wasatch Counties. Both communities are truly yours, because we are one parish. "That they may all be one" (John 17:21).

### A Call to Unity and Charity

Like every parish family, we sometimes experience misunderstandings, differences in perspective, or wounded feelings. I invite all of us to use this Lenten season as a time of grace, to grow in patience, charity, and mutual understanding, to forgive readily, and to renew our commitment to

unity in Christ. "Bear with one another in love, striving to preserve the unity of the Spirit through the bond of peace" (Ephesians 4:2-3).

The world will know we are Christians not by how large or beautiful our churches are, but by our love for one another, just as the Lord said: "By this all will know that you are my disciples, if you have love for one another" (John 13:35).

Yours in Christ,  
Fr. Dass

## ADORATION & CONFESSION TIME CHANGE

BEGINNING FEBRUARY 23RD | ST. MARY'S

### MONDAYS

EUCCHARISTIC ADORATION: 4:30 - 5:50 PM

BENEDICTION: 5:50 PM

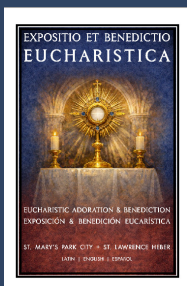
CONFESSION: 4:30 - 6:00 PM

*No confession on Tuesdays*

Beginning this Lent, we will be moving our Tuesday Confession time to Monday during Eucharistic Adoration. This change is meant to make it easier for the faithful to spend time with the Lord in Adoration and receive the Sacrament of Reconciliation in the same visit, especially during this season of repentance and renewal. Many priests report that confession attendance increases significantly when it is offered during Adoration, since prayer before the Blessed Sacrament helps prepare the heart to receive God's mercy.

On Mondays, the Blessed Sacrament will be exposed from 4:30-5:50 pm, with Benediction at 5:50 pm. Confessions will be available from 4:30-6:00 pm (or until Benediction begins). All are warmly encouraged to come, pray before the Eucharistic Lord, and receive His mercy.

*"Return to the Lord your God, for He is gracious and merciful." (Joel 2:13)*

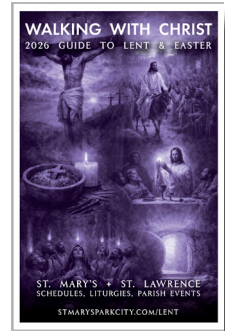


## A GUIDE FOR ADORATION

We're pleased to offer new Latin/English/Spanish Eucharistic Adoration booklets. These are available at both St. Mary's & St. Lawrence to assist you in praying and meditating before the Blessed Sacrament. Please help us save money by returning them following adoration.

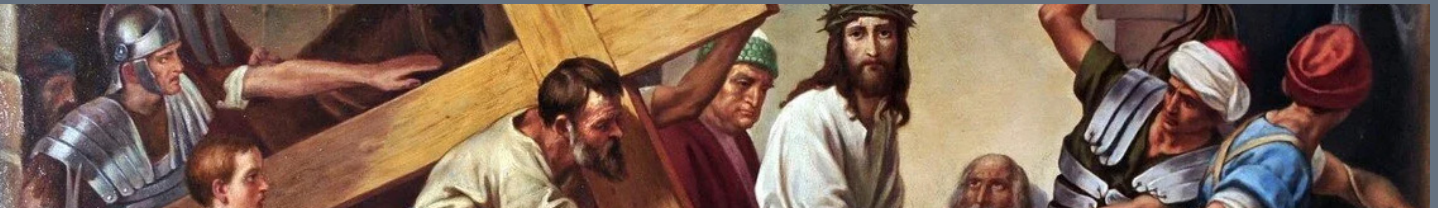
# 2026 GUIDE TO LENT & EASTER

To help you make the most of this Lenten & Easter seasons, we're proud to offer "Walking with Christ" - our 2026 Guide to Lent & Easter.



PICK UP YOUR FREE COPY IN THE GATHERING SPACE  
OR ONLINE AT [STMARYSPARKCITY.COM/LENT](https://stmarysparkcity.com/LENT)

## PRAY THE STATIONS OF THE CROSS



EVERY FRIDAY DURING LENT

**ST. MARY'S**  
3PM (ENGLISH) & 7PM (SPANISH)

**ST. LAWRENCE**  
6PM (BILINGUAL)

WOMEN'S LENT DEVOTIONAL STUDY

## DESERT BLOOM

DISCOVERING UNEXPECTED JOY IN THE WILDERNESS

TUESDAYS AT 5PM | MARCH 3 - APRIL 7  
ST. MARY'S PARISH CENTER ROOM 103

*For more information or to participate, contact:  
Beth Hartung - [Beth.Hartung@yahoo.com](mailto:Beth.Hartung@yahoo.com) or text 913-208-3321*

# GIVE

---

BRING THE BODY OF

---

CHRIST TO ALL

**Each week, through your gifts, you . . .**

*Welcome thousands of locals, visitors, and newcomers to worship and discover the Body of Christ*

*Offer the sacraments, a peaceful place to pray, and a sanctuary to grow and serve*

*Form hundreds of children in the faith*

*Provide homes, food, clothes, care, and more to local families in need*

*Beautify and maintain St. Mary's Church, Old Town Chapel, Parish Center, and St. Lawrence Mission, beacons of the greater community, utilized by the area's best charitable programs and artistic events*

**SUPPORT ST. MARY'S**  
(Park City)



**SUPPORT ST. LAWRENCE**  
(Heber City)



*Scan the QR codes, visit [StMarysParkCity.com/GIVE](http://StMarysParkCity.com/GIVE), or use a pew envelope. Thank you!*

# PLEASE SUPPORT THE DIOCESAN DEVELOPMENT DRIVE

## FORM YOUR FUTURE PRIESTS PROVIDE FOR UTAH FAMILIES IN NEED BUILD THE GREATER CATHOLIC CHURCH IN UTAH

The DDD is *the* way that you can support the greater Catholic Church in Utah!

Your gifts help form the future priests of Utah, like St. Mary's own seminarians Michael Weight, Anthony Shumway, and Brian Schumacher. Your support helps feed struggling families and children through Catholic Community Services of Utah. And your generosity provides for the less fortunate Catholic communities helping to build the Church in Utah!

Thank you!



PLEASE USE THE QR CODE ABOVE  
TO MAKE YOUR GIFT NOW

*Please choose "Saint Mary of the Assumption Catholic Church (2089)" in the Parish Drop-down*

## HELP ST. MARY'S MEET THE REQUIRED \$348,000 GOAL

The Diocese of Salt Lake City (the Church in Utah) has set St. Mary's 2026 Diocesan Development Drive Goal at \$348,000. St. Mary's is required to pay the difference between what is raised and the actual goal.

### SUGGESTED GIVING AMOUNTS

#### Ongoing Monthly Gift

\$1,000  
\$500  
\$100

#### One-Time Annual Gift

\$12,000  
\$6,000  
\$1,200

# ENTRANCE HYMN

## LED BY THE SPIRIT

KINGSFOLD



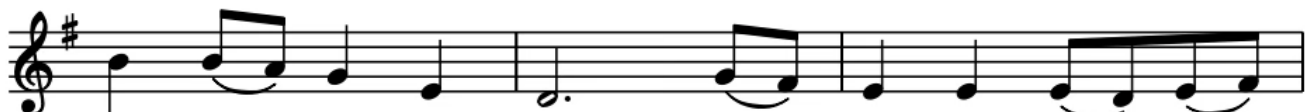
1. Led by the Spir - it of our God, we go to fast and  
2. Led by the Spir - it, we con - front temp - ta - tion face to  
3. Led by the Spir - it, now draw near the wa - ters of re -  
4. Led by the Spir - it, now sing praise to God the Trin - i -



1. pray With Christ in - to the wil - der - ness; we join his  
2. face, And know full well we must re - ly on God's re -  
3. birth With hearts that long to wor - ship God in spir - it  
4. ty: The Source of Life, the liv - ing Word made flesh to



1. pas - chal way. "Rend not your gar - ments, rend your hearts. Turn  
2. deem - ing grace. On bread a - lone we can - not live, but  
3. and in truth. "Who - ev - er drinks the drink I give shall  
4. set us free, The Spir - it blow - ing where it will to



1. back your lives to me." Thus says our kind and  
2. nour - ished by the Word We seek the will of  
3. nev - er thirst a - gain." Thus says the Lord who  
4. make us friends of God: This mys - t'ry far be -



1. gra - cious God, whose reign is lib - er - ty.  
2. God to do: this is our drink and food.  
3. died for us, our Sav - ior, kin and friend.  
4. yond our reach, yet near in heal - ing love.

Text: CMD; based on Joel 2:12-13; Matthew 4:1-4; Mark 1:12-15; John 4:5-42; Bob Hurd, © 1996, Bob Hurd.  
Published by OCP. All rights reserved. Music: trad. English Melody; English Country Songs, 1893;  
adapt. by Ralph Vaughan Williams, 1872-1958.

Reserved. Reprinted under One License A-607411

# RESPONSORIAL PSALM

## PSALM 51: FIRST SUNDAY OF LENT. YEAR A



**R. Be mer - ci - ful, O Lord, for we have sinned.**

Text © 1969, 1981, 1997, ICEL. All rights reserved. Used with permission.  
Music: Owen Alstott, © 1977, 1990, OCP. All rights reserved.

All rights Reserved. Reprinted under One License A-607411

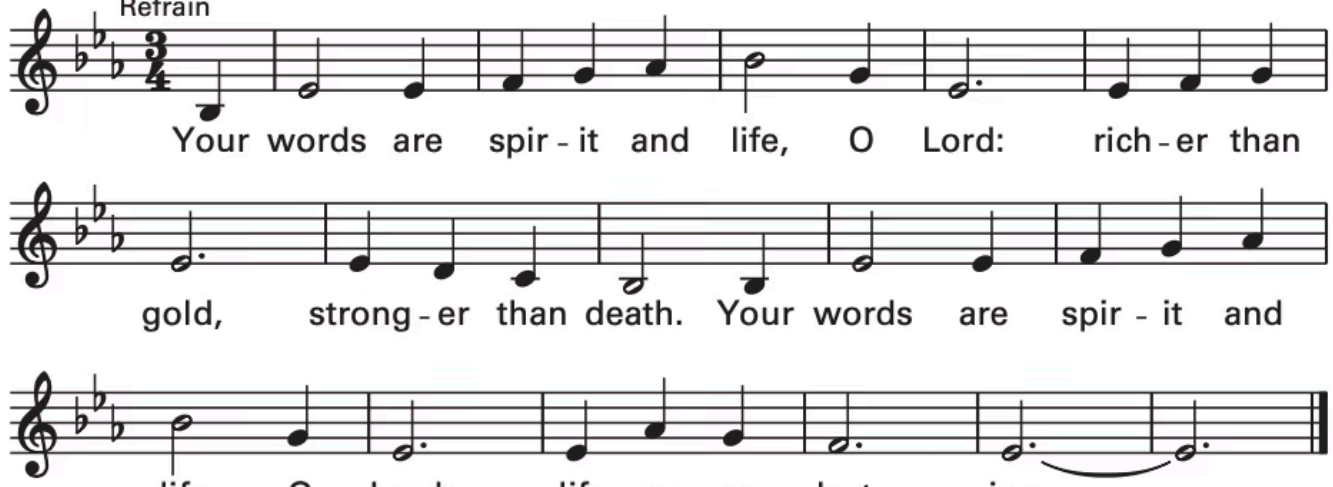
*No collection is taken during Mass. Thank you for your generosity using the envelope in the pew in front of you.*

# PREPARATION OF GIFTS

## YOUR WORDS ARE SPIRIT AND LIFE


Bernadette Farrell

Refrain



Your words are spir - it and life, O Lord: rich - er than  
gold, strong - er than death. Your words are spir - it and  
life, O Lord; life ev - er - last - ing.

Verses



1. God's law is per - fect, re - fresh - ing the soul, re -
2. God's pre - cepts keep us; their pur - pose is right. They
3. Liv - ing by God's truth is ho - ly and sure; God's
4. God's word is pre - cious, de - sired more than gold; worth

1. viv - ing the wea - ry spir - it. God's  
 2. glad - den the hearts of peo - ple. God's com -  
 3. pres - ence is ev - er - last - ing. God's  
 4. more than we dare i - mag - ine and,

1. rule can be trust - ed: bring - ing us wis - dom,  
 2. mand is so clear it brings us new vi - sion;  
 3. truth is e - ter - nal, bring - ing us jus - tice;  
 4. sweet - er than hon - ey, this word will feed us,

1. bring - ing God's wis - dom to birth.  
 2. bring - ing God's light to our eyes.  
 3. bring - ing God's jus - tice to earth.  
 4. bring - ing ful - fill - ment and joy.

to Refrain

Text: Based on Psalm 19:8–11. Text and music © 1993. Bernadette Farrell. Published by OCP. All rights reserved.  
 All rights Reserved. Reprinted under One License A-607411

# SANCTUS

## HOLY, HOLY, HOLY

*Mass XVIII, Chant*

San - ctus, San - ctus, San - ctus Dó - mi - nus De - us Sá -  
 ba - oth. Ple - ni sunt coe - li et ter - ra gló - ri - a tu - a.  
 Ho - sán - na in ex - cél - sis. Be - ne - dí - ctus qui ve - nit in  
 nó - mi - ne Dó - mi - ni. Ho - sán - na in ex - cél - sis.

Text and music: Chant; *Graduale Romanum*, 1974.  
 All rights Reserved. Reprinted under One License A-607411

# AGNUS DEI

## LAMB OF GOD



A-gnus De - i, qui tol - lis pec - cá - ta mun - di: mi - se -  
 ré - re no - bis. A-gnus De - i, qui tol - lis pec - cá - ta  
 mun - di: mi - se - ré - re no - bis. A-gnus De - i,  
 qui tol - lis pec - cá - ta mun - di: do - na no - bis pa - cem.

All rights Reserved. Reprinted under One License A-607411

# COMMUNION HYMN

## ON EAGLE'S WINGS

Michael Joncas



Verse 1  
 1. You who dwell in the shel-ter of the Lord, who a - bide in his  
 shad-ow for life, say to the Lord: "My ref-uge, my rock in whom I trust!"  
 to Refrain  
 Refrain  
 And he will raise you up on ea - gle's wings, bear you on the  
 breath of dawn, make you to shine like the

to Verses (last time to Coda) ♯

sun, and hold you in the palm of his hand.

♯ Coda

And hold you, hold you in the palm of his hand.

Verse 2

2. The snare of the fowl-er will nev-er cap-ture you, and fam-ine will bring

2. you no fear: un-der his wings your ref-uge, his faith-ful-ness your shield. to Refrain

Verse 3

3. You need not fear the ter-ror of the night, nor the ar-row that flies by

3. day; though thou-sands fall a - bout you, near you it shall not come. to Refrain

Verse 4

4. For to his an-gels he's giv-en a com-mand to

4. guard you in all of your ways; up - on their hands they will

4. bear you up, lest you dash your foot a-gainst a stone. to Refrain

## PRAYER OF THANKSGIVING AFTER COMMUNION

Dear sweet Jesus, I kneel before you and give you thanks for the great treasure of the Most Blessed Sacrament. May it nourish me with a lively faith and with true repentance. May your cross be my strength, your resurrection be my life, and your grace be my sure confidence. With the Father and the Holy Spirit, your love is the full satisfaction of my desire, my refreshment, and my own love. May you be glorified in all things everywhere and may your peace be the joy of all people.  
AMEN.

## HYMN OF PRAISE SHELTER ME, O GOD


Bob Hurd

Refrain



Shel-ter me, O God; hide me in the shad-ow of your wings. You a-lone

Verses



are my hope.

1. When my foes sur-round me, set me
2. As a moth - er gath - ers her \_\_\_\_\_
3. Though I walk in dark - ness, through the



to Refrain

1. high a - bove their reach. Hear me when I call your name.
2. young be-neath her care, gath-er me in - to your arms.
3. nee-dle's eye of death, you will nev-er leave my side.

Text: Based on Psalm 16; Psalm 61; Luke 13:34. Text and music © 1984, Bob Hurd.  
Published by OCP. All rights reserved.

All rights Reserved. Reprinted under One License A-607411

# RECESSIONAL

## PRAISE TO YOU, O CHRIST OUR SAVIOR


Bernadette Farrell

Refrain



Praise to you, O Christ, our Sav-ior, Word of the Fa-ther, call-ing us to life;  
 Son of God who leads us to free-dom: glo-ry to you, Lord Je-sus Christ!

Verses



1. You are the Word who calls us out of dark-ness; you are the
2. You are the one whom proph-ets hoped and longed for; you are the
3. You are the Word who calls us to be ser-vants; you are the
4. You are the Word who binds us and u-nites us; you are the



1. Word	who leads us in - to light;	you are the Word	who
2. one	who speaks to us to - day;	you are the one	who
3. Word	whose on - ly law is love;	you are the Word - made -	
4. Word	who calls us to be one;	you are the Word	who

to Refrain



1. brings us through the des - ert:	glo - ry to you, Lord Je-sus Christ!
2. leads us to our fu - ture:	glo - ry to you, Lord Je-sus Christ!
3. flesh who lives a-mong us:	glo - ry to you, Lord Je-sus Christ!
4. teach - es us for-give-ness:	glo - ry to you, Lord Je-sus Christ!

© 1986, Bernadette Farrell. Published by OCP. All rights reserved.

All rights Reserved. Reprinted under One License A-607411

+ SINCE 1881 +

## RECEIVE CUSTOMIZED TEXT & EMAIL UPDATES

Find out about all our groups, weekly series, & ministries and choose what info you'd like to receive from them.

## SIGN-UP OPTION 1

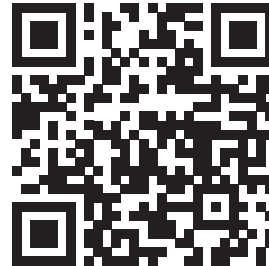
TEXT **MARYPC** to **84576** from your phone

## SIGN-UP OPTION 2

VISIT [StMarysParkCity.com/DIGITAL-CONTENT](http://StMarysParkCity.com/DIGITAL-CONTENT)

## READ THIS WEEKEND'S SUNDAY REFLECTION

[StMarysParkCity.com/Celebrate-Sunday](http://StMarysParkCity.com/Celebrate-Sunday)



### STAFF LEADERSHIP

#### Pastor

Fr. Arokia Dass David  
[frdass@stmarysparkcity.com](mailto:frdass@stmarysparkcity.com)

#### Parochial Vicar

Fr. Kenneth Rey Parsad  
[frparsad@stmarysparkcity.com](mailto:frparsad@stmarysparkcity.com)

#### OCIA & Baptism

Deacon Tom Tosti  
(435) 783-5831 - [ttosti@stmarysparkcity.com](mailto:ttosti@stmarysparkcity.com)

#### St. Mary's Parish Administrator

Sandy Foley  
(435) 940-5455 - [sfoley@stmarysparkcity.com](mailto:sfoley@stmarysparkcity.com)

#### St. Lawrence Administrator & Parish Communications

Justin Hibbard  
(410) 353-1022 - [justin@saintlawrenceheber.com](mailto:justin@saintlawrenceheber.com)

#### Director of Charity

Maria Villar  
(801) 652-5039 - [mvillar@stmarysparkcity.com](mailto:mvillar@stmarysparkcity.com)

#### St. Mary's Dir. of Rel. Ed. & Safe Environment

Lauri Hawkins  
(435) 940-5453 - [lhawkins@stmarysparkcity.com](mailto:lhawkins@stmarysparkcity.com)

#### St. Lawrence Dir. of Rel. Ed. & Save Environment

Andreina Payan  
[andreina@saintlawrenceheber.com](mailto:andreina@saintlawrenceheber.com)

#### Dir. of Evangelization

Anthony Jewett  
(435) 237-5531 - [ajewett@stmarysparkcity.com](mailto:ajewett@stmarysparkcity.com)

#### Marriage Prep

Nancy Tosti  
[ntosti@stmarysparkcity.com](mailto:ntosti@stmarysparkcity.com)

#### Receptionist and Dir. of Hispanic Ministry

Gracie Cortes  
(435) 649-9676 - [gcortes@stmarysparkcity.com](mailto:gcortes@stmarysparkcity.com)

#### Director of St. Mary's Music Ministry

Joe Demers  
[saintmarysmusicministry@gmail.com](mailto:saintmarysmusicministry@gmail.com)

#### Baptism Classes at St. Lawrence (español)

Hugo Arrambide  
[harrambide2@msn.com](mailto:harrambide2@msn.com)

#### St. Lawrence Thrift Store Director

Bobbie Wolbach  
(435) 657-0209  
[stlthriftstore@gmail.com](mailto:stlthriftstore@gmail.com)



SCAN TO GIVE  
TO ST. MARY'S

## ONLINE GIVING

*Easily and securely make your donation online with the ability to make automatic payments from a credit or debit card.*

THANK YOU FOR YOUR GENEROSITY!



SCAN TO GIVE  
TO ST. LAWRENCE