

# SAINT MARY'S

## CATHOLIC CHURCH • PARK CITY

1505 White Pine Canyon Rd. • Park City, UT 84060 • [StMarysParkCity.com](http://StMarysParkCity.com) • (435) 649-9676



25 SEPTEMBER 2022

THE TWENTY-SIXTH SUNDAY  
IN ORDINARY TIME

CHECK OUT THE PHOTOS FROM  
**ST. MARY'S SEPTEMBER SUMMIT**  
WITH JUSTIN HIBBARD!

MASS TIMES + WORKSHOP+ MORE



# WELCOME TO ST. MARY'S

In 1881, God gave a small group of miners a mission to bring to these mountains the world's greatest treasure: the Body and Blood of Jesus Christ, the Eucharist, and the Faith and Charity that flow from Him.

Today, that mission has spread from the streets of Old Town Park City, to the meadows of White Pine Canyon, to the Heber Valley and beyond. St. Mary's seeks to evangelize, catechize, give back in Charity, and enrich the community through the Catholic Faith and its intellectual, artistic, and cultural traditions. To bring all the treasure of Jesus Christ, for the salvation of souls, and the Greater Glory of God!

*Newcomers and Visitors: Thank you for joining us. We invite you to learn more about St. Mary's at our website: [StMarysParkCity.com](http://StMarysParkCity.com).*

## ARE YOU A VISITOR?

### ON VACATION?

WE WANT TO HEAR  
WHERE YOU ARE FROM!

### SEE OUR GUEST MAP

GO TO:  
[STMARYSPARKCITY.COM/GUEST-MAP](http://STMARYSPARKCITY.COM/GUEST-MAP)

### FILL OUT THE SURVEY

AND WE'LL ADD A PIN  
TO FILL UP THE MAP!

## MASS TIMES, CONFESSION, ADORATION, & VISITING HOURS

### ST. MARY'S CHURCH

1505 White Pine Canyon Rd, Park City 84060

(435) 649-9676 - [StMarysParkCity.com](http://StMarysParkCity.com)

**Office Hours (Mon-Thur) 8:30 AM - 5:00 PM**

Saturday English Mass: 5:30 PM

Sunday English Mass: 8:00 AM, 10:30 AM

Domingo Misa en Español: 1:00 PM

Sunday Latin Mass: 3:00 PM

Sunday Sung Vespers: 4:45 PM

Daily Mass: Mon - Fri 8:00 AM

Confession: Tues, Thurs, Sat 4:30 - 5:30 PM

Adoration Holy Hour: Mon 5 PM | Thu 8:30 AM

Visiting Hours: Mon - Thurs 7:30 AM - 6:00 PM  
Fri 3:00 - 6:00 PM

### ST. MARY'S OLD TOWN CHAPEL

121 Park Ave, Park City 84060

Visiting Hours: Daily during daylight hours.

### ST. LAWRENCE MISSION

5 South 100 West, Heber City 84032

(435) 654-4035 - [StLawrenceMission.org](http://StLawrenceMission.org)

**Office Hours (Mon-Thur) 11 AM - 6 PM**

Saturday English Mass: 5:00 PM

Sunday English Mass: 10:00 AM

Domingo Misa en Español: 3:00 PM

Daily Mass: Mondays and Thursdays 9:30 AM

Misa en Español: Miércoles 6:00 PM

Confession:\* Mondays and Thursdays 10:00 AM

Adoration + Confession:\* Wed. 5:00 PM - 6:00 PM

*\*No Adoration or Confession from September 5 to October 6.*

### ST. LAWRENCE THRIFT STORE

84 S 100 W, Heber City, UT 84032

(435) 657-0209 - [StLawrenceThriftStore.com](http://StLawrenceThriftStore.com)

Wed - Fri 10:00 AM - 6:00 PM, Sat 10:00 AM - 5:00 PM

*Donation Center located at Old Town Chapel in Park City*

For upcoming liturgies, visit [StMarysParkCity.com/LITURGY](http://StMarysParkCity.com/LITURGY)

# Getting new skis this year?

## DONATE YOUR USED GEAR NOW

---

SKI SALE HAPPENING NOVEMBER 18-19 AT ZERMATT RESORT IN MIDWAY

Support the charitable work of St. Mary's in Heber Valley!

Every year, our St. Lawrence Thrift Store offers skis, equipment, and clothing on sale at Zermatt Resort in Midway! In anticipation of its ski sale (November 18-19), St. Lawrence Thrift Store is in need of used skis, equipment, and adult and children's ski outerwear.

Please drop off your used gear at the St. Lawrence Donation Center now at 121 Park Ave, Park City, (in the parking lot of St. Mary's Old Town Chapel off of Woodside and King) Monday - Saturday, 9 AM - 4 PM.

***For more details please call the store at (435) 657-0209.***



[STMARYSPARKCITY.COM/ST-LAWRENCE-THRIFT-STORE](http://STMARYSPARKCITY.COM/ST-LAWRENCE-THRIFT-STORE)



# SEPTEMBER SUMMIT AT ST. MARY'S WITH PARISHIONER JUSTIN HIBBARD

**T**HANK you Justin Hibbard for telling your story at our September Summit, “From Baptist Pastor to Faithful Catholic!” We hope everyone enjoyed the inspiring and very entertaining talk! *Check out all the photos from the summit on our Flickr page, linked at the bottom of the website.*







American  
Red Cross



*Join Camp Do Good*

**DONATE BLOOD. HELP SAVE LIVES.**

**Blood Drive**  
**Knights of Columbus**  
**Park City**

St. Mary's Catholic Church  
1505 White Pine Canyon Road  
Park City, UT, 84060

**Friday, September 30, 2022**  
**1:00 PM to 6:00 PM**

To schedule your appointment or for more information, please log on  
to [redcrossblood.org](https://redcrossblood.org) and enter the Sponsor Code: "knights pc"  
or call 1-800-RED-CROSS (1-800-733-2767)

If you have questions regarding your eligibility to donate blood,  
please call 1-866-236-3276.



Scan to be directed to  
RapidPass®

**Streamline your donation experience and save up to 15  
minutes by visiting [RedCrossBlood.org/RapidPass](https://RedCrossBlood.org/RapidPass) to  
complete your pre-donation reading and health history  
questions on the day of your appointment.**



Scan to schedule  
an appointment.



# SUNDAY ROSARY AT ST. MARY'S THROUGHOUT THE MONTH OF OCTOBER

---



---

## EVERY SUNDAY BEFORE MASSES | ST. MARY'S CHURCH

Do you wish to cultivate a devotion to the Holy Rosary? Join St. Mary's for a weekly recitation of the Rosary during this special month of the Holy Rosary, every Sunday before Mass.

The weekly prayers will be led by fellow parishioners and participants will have the opportunity to pick up holy cards and materials about the 15 Promises of Our Lady to those who pray the Rosary.

We hope that you can join us! ***Rosaries will begin every Sunday at 7:37 before the 8 AM Mass and at 10:07 before the 10:30 AM Mass and all parishioners are encouraged to join.***

*I have obtained from my Divine Son that all the advocates of the Rosary shall have for intercessors the entire celestial court during their life and at the hour of death.*

- OUR LADY TO ST. DOMINIC

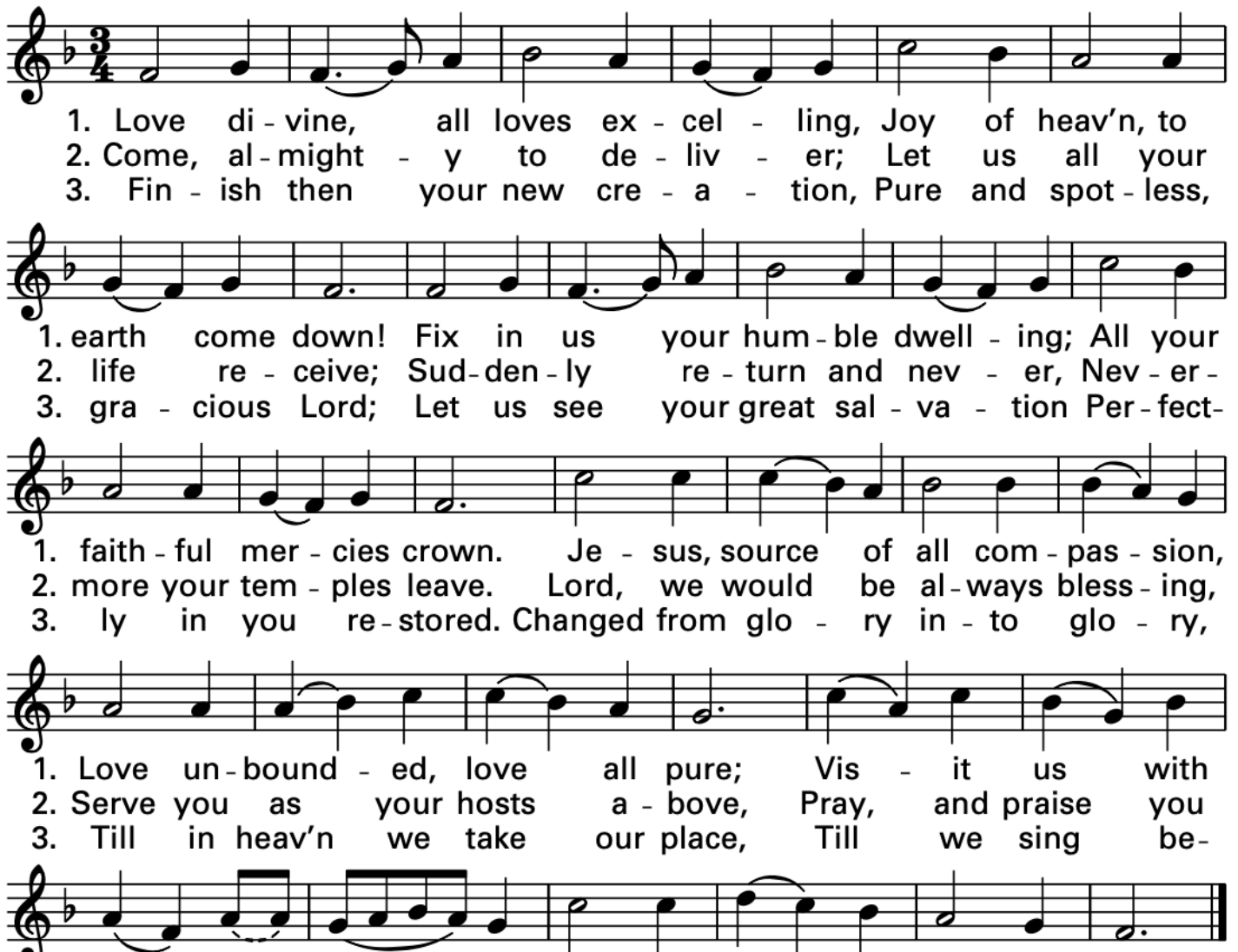


Readings for this weekend's Mass can be  
found on page 646 of the blue book.

## OPENING HYMN

### LOVE DIVINE, ALL LOVES EXCELLING

HYFRYDOI



1. Love di - vine, all loves ex - cel - ling, Joy of heav'n, to  
2. Come, al - might - y to de - liv - er; Let us all your  
3. Fin - ish then your new cre - a - tion, Pure and spot - less,

1. earth come down! Fix in us your hum - ble dwell - ing; All your  
2. life re - ceive; Sud - den - ly re - turn and nev - er, Nev - er -  
3. gra - cious Lord; Let us see your great sal - va - tion Per - fect -

1. faith - ful mer - cies crown. Je - sus, source of all com - pas - sion,  
2. more your tem - ples leave. Lord, we would be al - ways bless - ing,  
3. ly in you re - stored. Changed from glo - ry in - to glo - ry,

1. Love un - bound - ed, love all pure; Vis - it us with  
2. Serve you as your hosts a - bove, Pray, and praise you  
3. Till in heav'n we take our place, Till we sing be -

1. your sal - va - tion, Let your love in us en - dure.  
2. with - out — ceas - ing, Glo - ry in your pre - cious love.  
3. fore the al - might - y, Lost in won - der, love and praise.

Text: 87 87 D; Charles Wesley, 1707–1788, alt. Music: Rowland H. Prichard, 1811–1887.



# RESPONSORIAL PSALM

## PSALM 146



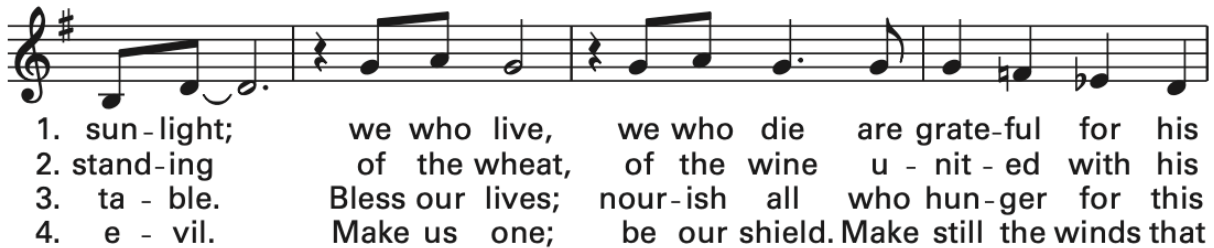
Text © 1969, 1981, 1997, ICEL. All rights reserved. Used with permission.  
Music: Owen Alstott, © 1977, 1990, OCP. All rights reserved.

All rights Reserved. Reprinted under One License A-607411

# COMMUNION HYMN

## BEHOLD THE LAMB

Martin Willett



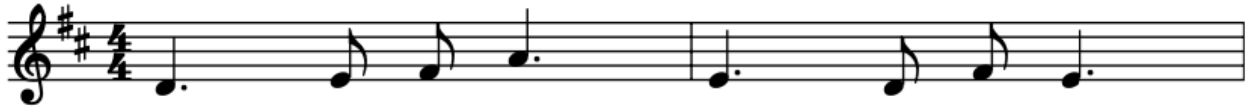
Text: Refrain based on John 1:29. Text and music © 1984, OCP. All rights reserved.

Text: Vss. 1–3, 5–9, Bernard Geoffroy, b.1946; tr. by Ronald F. Krisman, b.1946, © 2011, GIA Publications, Inc.; vs. 4, anonymous  
Tune: LIVING GOD. 7 7 7 7 with refrain: Dom Clément Jacob. OSB. 1906–1977. adant.

All rights Reserved. Reprinted under One License A-607411

# SONG OF PRAISE

## CHRIST BEFORE US



1. Christ be - fore us, Christ be - side us,  
2. May we be for one an - oth - er  
3. God be - fore us through the a - ges;  
4. O Re - deem - er, fill your ser - vants



1. Christ to guide us all our days. He to car - ry  
2. all that you would have us be. May we live your  
3. Christ be - side us here to - day. Spir - it, lead us  
4. with your words of last - ing life. Give to those with



1. all our sor - rows, he to bear us per - fect grace.  
2. law of kind - ness, love, com - pas - sion, char - i - ty.  
3. forth for - ev - er; guide and help us all our days.  
4. hands of heal - ing love trans - cend - ing pain and strife.



1. Je - sus, Sav - ior, Friend and Broth - er, In - ter - ces - sor,  
2. May we climb your ho - ly moun - tain; may we see your  
3. Christ the Sav - ior, God the Liv - ing, Great Cre - a - tor,  
4. Make us lov - ing sons and daugh - ters; make us ho - ly,



1. Son of God, save your peo - ple in your dy - ing,  
2. ho - ly face! Vis - it now this hum - ble dwell - ing;  
3. Spir - it blest! Ho - ly Three - in - One Im - mor - tal,  
4. kind and true, sent to la - bor for your King - dom—



1. and in ris - ing, con - quer death.  
2. dwell with - in this ho - ly place.  
3. come and be our wel - come guest.  
4. rest - less till we rest in you.

Text: 87 87 D; © 1990, Janèt Sullivan Whitaker. Published by OCP. All rights reserved. Music: Welsh Melody.

All rights Reserved. Reprinted under One License A-607411



# PARISH SERVICE ANNOUNCEMENTS

## SIGN UP FOR ST. MARY'S DAILY E-REFLECTIONS

To get St. Mary's own  
Daily E-Reflections, text  
**Reflections** to **84576** from  
your smartphone or visit

**StMarysParkCity.com/reflections.**

## SUPPORT BETHLEHEM WOOD CARVING

Bethlehem Wood Carving will be at Saint Mary's October 8-9 to sell olive wood carvings from the Holy Land after Mass. Proceeds from the sale will be used to support Catholics and Christians living in Bethlehem and the Holy Land. Please try to support them if you can by purchasing these beautiful carvings. These carving will make a great gift for you or your loved ones. **Your support is needed. Thank you!**

## MASS AND PRAYER INTENTIONS

To submit Mass or prayer intentions, visit **StMarysParkCity.com/intentions**, or **call or email for more info: (435) 649-9676 / gcortes@stmarysparkcity.com.**

*Si Usted desea solicitar una intención para una Misa, favor de visitar StMarysParkCity.com/intentions o llamar a la oficina y hablar con Gracie Cortés para mas información. (435) 649-9676 / gcortes@stmarysparkcity.com.*

## STAFF LEADERSHIP

### Pastor

Fr. Christopher Gray  
(435) 940-5451 - cgray@stmarysparkcity.com

### Parochial Vicar

Fr. Noel Ancheta  
(602) 403-0294

### RCIA, Baptismal & Marriage Prep

Deacon Tom Tosti  
(435) 783-5831 - ttosti@stmarysparkcity.com

### Baptismal & Marriage Prep

Deacon Bob Hardy  
(435) 783-5831 - ttosti@stmarysparkcity.com

### Parish Administrator

Sandy Foley  
(435) 940-5455 - sfoley@stmarysparkcity.com

### Dir. of Development & Communications

Killian Beeler  
kbeeler@stmarysparkcity.com

### Dir. of Rel. Ed., Middle & H.S. Youth

Lauri Hawkins  
(435) 940-5453 - lhawkins@stmarysparkcity.com

### Dir. of Evangelization

Anthony Jewett  
435-237-5531 - ajewett@stmarysparkcity.com

### Receptionist and Dir. of Hispanic Ministry

Gracie Cortes  
(435) 649-9676 - gcortes@stmarysparkcity.com

### Director of Music Ministry

Joe Demers  
saintmarysmusicministry@gmail.com

## NEWS FROM THE FRONT DESK FOOD BANK VOLUNTEERS NEEDED

Contact Sarah Dellenbach: (435) 655-7041

## RECEIVE CUSTOMIZED TEXT & EMAIL UPDATES

Find out about all our groups, weekly series, & ministries and choose what info you'd like to receive from them.

## SIGN-UP OPTION 1

TEXT **MARYPC** to **84576** from your phone

## SIGN-UP OPTION 2

VISIT **StMarysParkCity.com/DIGITAL-CONTENT**